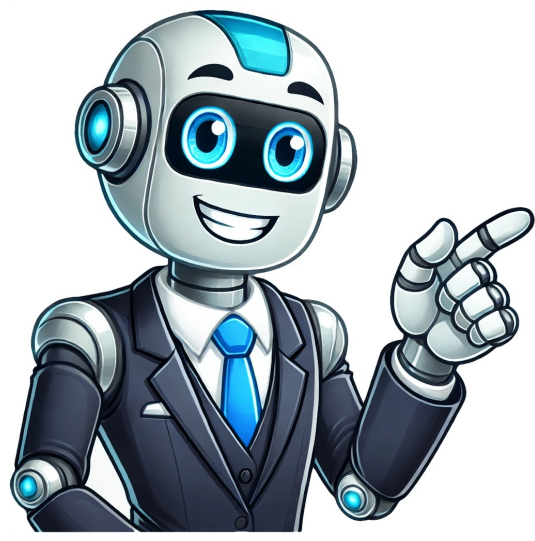


Continue



Wordle answer june 10

Wordle has become a viral sensation worldwide due to its simplicity and accessibility, making it a popular game among people of all ages. The game's straightforward gameplay and daily challenges keep players engaged and eager to continue playing. One reason for its popularity is that it is free to play on various devices with an internet connection, providing users with the flexibility to access it anywhere. Playing Wordle requires basic English skills, as it revolves around 5-letter words, but hints are provided to aid in finding the correct word. With six attempts to guess the word, players can learn a new word each day and strengthen their vocabulary by discovering its meaning. The game's built-in social features allow users to share their achievements with friends and fellow players. To increase one's chances of winning, it is recommended to use balanced vowels and consonants in the first attempt and employ strategic guessing techniques throughout the game. Additionally, players can return to the puzzle later if they become stuck, as there is no time pressure beyond completing it by midnight. The June 10 Wordle answer was AGAIN, a common phrase that refers to actions done repeatedly, providing a unique challenge for players to solve within the allotted six attempts. Recent Wordle solutions can provide valuable insights for improving your guessing skills. By remembering past answers, you can avoid choosing words that have already been used and come up with more effective starting words. Here are some recent Wordle answers: * June 9: Balsa * June 8: CRUMB * June 7: HATER * June 6: SCOUT * June 5: ENNUI * June 4: BEAST * June 3: NANNY * June 2: HUMID * June 1: JAZZY * May 31: AGILE When playing Wordle, it's essential to start with a strong word that contains multiple vowels and common consonants. Avoid using words with repeated letters. As you play, pay attention to the colors of the boxes after entering each word. * Gray indicates the letter is not in the secret word. * Yellow indicates the letter is in the word but not in that position. * Green indicates the correct letter is in the right spot. Use this information to inform your next guesses and try to avoid using letters you've already eliminated. If you need more tips, check out our Wordle advice section. Wordle is not just about guessing words, but also about understanding the clues hidden in each letter. When you play, your goal is to guess the hidden word as quickly as possible while using your vocabulary and logical thinking skills. The game provides hints through the placement of colored letters, which can be found in various places within the word. The more letters you guess correctly, the faster you'll get closer to solving the puzzle. Keep in mind that some letters may appear multiple times in different words, so think carefully about your next move. Additionally, familiarize yourself with recently used words and common letter combinations to help you narrow down your options. When choosing a starting word, consider using popular letters like 'A', 'E', 'I', 'O', 'U', 'S', 'R', 'L', or 'T'. Remember that highlighted yellow letters can appear in other places within the word. To improve your chances of solving the puzzle quickly, use strategies like focusing on vowels and common letter patterns. For those who want to play a game themselves, you can create your own Wordle using our generator tool. You can even create a tournament with up to 10 words. Alternatively, check out our guides for tips and tricks, including super-hint suggestions, Wordle answers, and games like Wordle guide. To get started, try using popular starting words like 'CRANE', 'SOARE', or 'IRATE'. By combining strategy with vocabulary skills, you'll be on your way to solving the Wordle puzzle in no time! Wordle Clues - June 10: Tips to Solve Today's Puzzle Experiment with different strategies, as today's word is an adverb of medium difficulty. The answer starts with the letter A. After careful analysis, we found that the correct solution is: Manga This term refers to Japanese comics or graphic novels, appealing to both children and adults. Note: The game Wordle has gained a loyal fan base by challenging players to guess each day's five-letter word in as few attempts as possible. By utilizing common letters and sound sequences, such as vowels like "e" and "a," and consonants like "r" and "l," you can boost your chances of solving the puzzle quickly. Also, be aware that choosing words starting with less common letters like "q", "z", "j", or "x" might not be the best approach. Wordle's newest challenge is out and it's proving to be tougher than usual for many players. Wordle: Rules Daily, the goal is simple - guess a five-letter word in six attempts to win the game. If you guess correctly, boxes turn green. If not, they turn grey or yellow depending on if your letter appears elsewhere in the correct answer. Key hints have been revealed - today's word starts with P and ends with Y. Some players are finding it hard to crack the code, so a final big hint has been released - today's word is related to the concept of "godlessness" or atheism. Wordle was created by Josh Wardle as a gift and has since become incredibly popular with thousands playing daily. Unless activated, new players should be assured that Wordle isn't becoming more difficult. Why do some days have two different correct answers? Wordle's core idea is to solve a single puzzle with one correct solution worldwide. However, sometimes the game accepts dual solutions on the same day, seemingly contradicting its principles. The reason behind this anomaly lies in recent changes made by The New York Times after acquiring Wordle earlier this year. A subtle hint for the June 10th Wordle answer: It contains a three-letter word related to food, but with no direct connection. Today's Wordle is a 5-letter word starting with P. What's the solution? It's your last chance to guess today's Wordle! We're finally revealing the answer. The solution to Wordle #356 is PIETY. PIETY refers to sincerity or devoutness in one's religion, and it has nothing to do with pie. For those who didn't get it earlier, here are some helpful tips and hints to solve future puzzles. Wordle was created by Josh Wardle as a gift for his partner and quickly gained popularity worldwide, resulting in various Wordle versions like Squabble, Heardle, Dordle, and Quordle. The game has also attracted the attention of TikTok creators who livestream their gameplay. If you missed yesterday's solution, here it is: June 9th's answer was [missing]. Wordle Puzzle Game Occasionally Accepts Two Correct Solutions on the Same Day Today is your last chance to solve Wordle #1087 before we unveil its secret: MANGA.If you didn't guess it correctly, don't worry, there will be a new puzzle for you to tackle tomorrow, and our team of experts will be back with helpful tips.