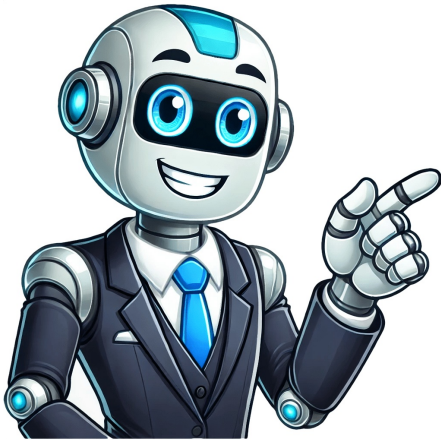


Click to prove
you're human



If you've spent any length of time browsing bedding online, you will have likely stumbled upon the terms 'bed sham' or 'pillow sham'. But what is a bed sham and how did it get its name?From accent pillows to coverlets, bedspreads to top sheets, there's a whole world of vocabulary to describe how we dress our beds. One thing's for sure: you can't create a luxury hotel bed feel or enjoy a great night's sleep without the best pillows.Here, bedding professionals clear up what a pillow sham is and how it's different from a standard pillowcase.You may like What is the difference between a pillow sham and a pillowcase?Nolah Mattress CEO Stephen Light says the main difference is that pillowcases are more functional and comfortable, whereas pillow shams are decorative. 'Standard pillowcases are thin fabric envelopes that encase your pillow, keeping it clean. They're often made with smooth, breathable materials for comfort and cooling,' explains Stephen. 'On the other hand, pillow shams are made from more decorative than comfort and cleanliness. They tend to be thicker and often have ornamental features like colors or patterns, trims, textured fabrics, buttons, etc.' They are also designed differently. Stevey Davis at Cozy Earth says a pillowcase is open-ended on one end, while a sham typically has a slip opening in the back of the sham to conceal the pillow inside.She says the pillow case protects the pillow you use to mainly sleep on, and a pillow sham is a second pillow, often resting on top when you have made your bed. Like Stephen Light says above, she describes a pillow sham as more of a decorative facade and recommends placing it in front of your sleep pillow, to provide asleek-looking bed.Some duvet sets, at Brooklinen, come with matching pillow shams that are certainly comfortable enough to sleep on, so the main difference is that a pillow sham fully conceals the pillow inside, whereas a pillowcase is more open. Therefore, pillow shams (and pillow protectors) will help stop pillowcases from turning yellow over time.One reviewer of this linen quilted sham at Brooklinen says that although lots of people don't sleep on their shams, she can't not sleep on them because they're so comfortable.Shams are a great way to upgrade your own bedding and add more pattern, texture, and comfort, as well as offering a lovely way to make a guest bedroom feel more special.Where does the sham go on the bed?To style a bed, many people use pillowcases for their primary sleeping pillows and pillow shams for the decorative pillows they place in front,' Stephens says. The mattress and bedding expert comments that pillows with pillow shams (also called bed shams) are often arranged to block the standard sleeping pillows from view. They also often go on top of the comforter and other bedding rather than under the covers, as demonstrated above.The sham can be either stacked on top of a sleeping pillow or layered one in front of the other, it simply comes down to personal preference. You might be questioning what, or who, the extra pillows are for if they're not for sleeping on, and admittedly it does mean taking them off before going to bed and finding someone to put them, but additional pillows always make bed look more finished and people sleep on bed shams?'When it's time for bed, many people remove their decorative pillows with shams to make more space for sleep,' says Stephen. 'You can sleep with them on the bed, but it may feel a bit cluttered.' If the material of your bed sham is textured or with frills, it's likely to be less comfortable on the skin, so a silk, linen, or cotton pillowcase will help you sleep better.Unlike a throw pillow, which is purely for aesthetics, a pillow sham can make a normal pillow into a more decorative feature, which you can swap back into a more functional pillow if needed.How do you put on a bed sham?'It depends on the design of the bed sham it may have an envelope closure, buttons, or a zipper. First, make sure you have the right size and shape pillow for the sham,' says Stephen Light from Nolah Mattress.Why is it called a pillow sham?'Decorative, more embellished pillows with a 'false front' became known as pillow shams because of the impression of a trick or illusion. Pillowcases come in all shapes and sizes, but have you ever used bed shams? These pillow coverings have been around since the 18th century. Today, they're just as popular as they were hundreds of years ago. But what is a sham and how does it differ from regular pillowcases? For starters, it has a purely aesthetic role. Most homeowners use shams to create a unified theme for their bedroom or enhance its visual appeal. These bedding accessories can add a touch of style and personality to your home, bringing a splash of color to any room. Many people think of bed shams as small pillows with a variety of patterns and designs. A sham is actually a decorative cover for pillow of different sizes. Some are available in solid colors, while others feature intricate embellishments. Generally, shams are made of satin, silk, and other premium fabrics, but you can also find cotton, linen, or polyester models. They come in standard pillow sizes and you can mix and match sizes when dressing your bed. Think of a bed sham as a pillow casing with a facade. While you may use it as a normal pillow, its role is to enhance the appearance of your bedroom. High-end retailers typically sell the covers, or shams, and pillows separately. However, you may use an inner filler of your choice. DESIGNER TIP: When buying a pillow insert to use with a sham, remember to buy the insert that is 1-2" larger than the overall size of the sham. A slightly oversized pillow will allow it to better fill out the sham and prevent it from looking saggy. Generally, feather and poly-fill are best for pillow shams. The latter option is suitable for those who get allergic to feathers. The downside is that it tends to form lumps over time. If you're the crafty type, you can make your own pillow shams. All you need is some fabric and basic sewing supplies. But first, read on to find out more about the different types and sizes of bed shams and how to use them for maximum impact. For starters, make sure you understand the difference between a pillow sham and a pillowcase. First of all, pillowcases have a functional role. They are designed to protect the pillows you sleep on from dust, debris, bacteria, and bodily fluids. While some models have decorative details and embellishments, they're generally simpler than a sham.Another difference between the two lies in their design. Most pillowcases are open at one end, while bed shams typically open from the back (their opening is often hidden).Pillow shams may also have flange edges on all four sides. This piece of fabric is often decorated with embroidery and embellishments.Regular pillowcases may have flanges, too, but they are more basic. Some styles only have a folded sewn hem.Bed shams are typically made from thicker fabrics that enhance their visual appeal. Pillowcases, on the other hand, are made from lighter, more breathable fabrics, such as cotton.Many consumers choose pillow shams that complement the color and design of their comforters, duvet covers, or quilts. Pillowcases are designed to complement the bedsheets. While you may sleep on pillow shams, that's not what they are meant for. These accessories have the role to add a decorative touch to your bedroom. Pillowcases, by comparison, serve a functional purpose and have basic designs. Both types of coverings are available in a large variety of colors and styles. Shams, however, have a distinctive design, with ruffles, flanges, monograms, embroidery, and other decorative details. If you ever go shopping for pillow shams, you may feel overwhelmed by the variety of styles and designs. The two most popular options are standard shams and European pillow shams. These can be further broken down into several other categories based on their size, shape, and material. European shams, or Euro shams, and standard shams look pretty similar. The primary difference between the two lies in their size. A standard sham is 20 by 26 in size, points out Elle Decor. European shams, on the other hand, are 26 by 26. Some European models measure 32 in height and 32 in width, but that's less common. These big square pillows can be used in the same way as a standard sham. You may also find quilted pillow shams, flanged pillow shams, and everything in between. These models are typically available in the sizes listed above. The difference between them lies in their design and/or the materials used. Quilted pillow shams, for instance, are thicker and softer than other models. Some have decorative stitching on the front, while others are quilted on both sides. Bedding stores may also offer queen shams, king shams, neckroll shams, and boudoir shams in addition to standard shams. Again, it's their size that makes the difference. Heres a quick overview of the different sham sizes available on the market: Standard sham: 20 x 26 Queen sham: 20 x 30 King shams: 20 x 36 Boudoir shams: 16 x 12 Neckroll shams: 16 x 6 or 12 x 6 (and other sizes) Euro shams: 26 x 26 Except for Euro shams, all other models are rectangular. Some retailers also offer custom-sized shams. If you're wondering what size to choose, you may find these guidelines helpful: Standard shams go well with smaller bed pillows and make a good choice for twin beds. Depending on your preferences, you may use two or more standard shams to give your bed a fresh look.King shams and queen shams can complement a spacious bedroom with a queen or king-size bed. However, they are not as popular as other models because of their large size.Euro shams are suitable for most types of pillows and bed sizes and offer great support for reading or watching a movie while in bed.Boudoir shams and neckroll shams are usually placed in front of standard, queen, or king shams. Due
to their small size, they have a purely decorative role. Pillow shams can enhance the ambience of your bedroom, allowing you to make subtle yet impactful changes. For example, you may use rustic pillow shams to boost the appeal of a cottage bedroom. Floral pillow shams can add a splash of color to your bedroom, making it look cozier and more relaxing. Minimalist pillow shams, on the other hand, are suitable for contemporary bedrooms. When used properly, they can add a touch of luxury without making your bedroom look crowded. You could choose one color, such as white, for your bed sheets and abstract patterns or contrasting colors for your duvet cover or shams. These accessories also protect your pillows from spills and pet hair, extending the time between washes. If you have a dog or cat, you can place shams on your sofa to minimize the risk of scratches. Moreover, shams can breathe new life into your pillows. If you have an old pillow, you can turn it into a modern sham instead of throwing it away. Pillow shams also offer a cost-effective way to upgrade your bedroom. Its cheaper to redecorate with shams than repaint the walls or purchase fancy home decor items. Worn-out pillow shams can be repurposed. You may turn them into a cozy pet blanket, a nice quilt, or a large placemat. Theres also the option to use them as floor pillows for kids or pets. As far as cleaning goes, shams are not too different from regular pillowcases. In general, they require less frequent washing since you dont sleep on them. Be sure to read the care label before laundering. Silk shams, for example, require more delicate care than flannel or cotton. Experts recommend washing silk garments by hand or in the washing machine at 86 to 104 degrees Fahrenheit (30-40 degrees Celsius). Let them dry away from sunlight or direct heat. Severely stained silk linens, including bed shams, should be dry-cleaned. Other delicate materials, such as satin and cashmere, require extra care, too. Cashmere pillow shams, for instance, should be washed by hand with quality shampoo or wool/cashmere detergents. If you're going to use the washing machine, place each sham in a mesh laundry bag and run the delicate cycle on the lowest temperature setting. Do not use the dryer because it may shrink or damage the fabric. Note that you should always remove the filler before washing a pillow sham. These items must be cleaned separately. Use mild detergents or natural cleaning solutions for shams to protect the fabric. Pillow shams can be used in endless combinations to upgrade your bedroom. For example, you can place mix and match shams of different sizes, colors, and textures for a playful ambience. Or you can layer several shams to create an overflow of pillows. These accessories are often stacked on the bed for a quick arrangement. You may also use one large pillow sham as a centerpiece. Consider styling your bed with Euro shams for perfect symmetry. Another option is to use two shams in similar colors but with different patterns for a unique look. There are no set rules for arranging your shams, so go ahead and play around with different colors, textures, and fabrics. You can even use different-sized pillow shams in an asymmetrical fashion. Now that we've answered your questionWhat is a sham?its time for you to decide how you plan to use these accessories. If, say, you want to give your bedroom a modern look, opt for pillow shams with abstract or geometric patterns. Wool pillow shams, on the other hand, are ideal for rustic bedrooms. Silk shams can add a touch of luxury to your bedroom, while linen shams can help you create a relaxing, laid-back space. Whats your favorite way to use pillow shams? Do you prefer a particular type of fabric or filling? Feel free to share your thoughts below. Are shams meant to be slept on? No, shams are usually decorative only and not meant to be slept on. But at the end of the day, a pillow is a pillow so use it as you own discretion. What is a sham on a bed? A sham on a bed is a decorative pillow that is usually put in front of other standard pillows. These tend to match the bedding and provide a pulled-together look for the whole bed. What is the difference between sham and pillowcase? Pillowcases are designed for you to sleep on. Shams are designed for aesthetics alone. This means that pillowcases are often made of thinner, more breathable fabric, and are easier to get on and off the pillow (for frequent washing). Shams are often made of a thicker fabric and either have a zipper closure or an overlapping opening in the back. Caring for Silk. Caring for Silk. Silk Association of Great Britain. (n.d.). Retrieved January 25, 2022, from Hepworth, A. (2020, September 24). How to wash cashmere by hand or in a machine (because yes, you can do that). PureWow. Retrieved January 25, 2022, from Rubin, C. (2018, March 27). Ask Jennifer Adams: What purpose does a pillow sham serve.. Retrieved January 25, 2022, from Thomas, J. (2020, November 17). Styles of pillow shams. Home Guides | SF Gate. Retrieved January 25, 2022, from Tonelli Assistant Editor Lucia Tonelli an Assistant Editor at Town & Country. L. (2021, November 1). If youre unsure of what a sham is, this is the guide for you. ELLE Decor. Retrieved January 25, 2022, from ImagesYou might think bedding is straightforward, but when you start throwing in coverlets, duvet covers, bolsters, Euro pillows, and valances, things can get complicated. So were here to clarify one especially beguiling component of your bed setup: pillow shams. A sham, at its most basic definition, is simply a decorative pillowcase. So how are these different than other pillows, and how do you use them correctly? Turns out there's quite a bit more to shams than meets the eye.The History of ShamsThe use of shams date back to the 18th century, when people started manufacturing false front covers for their bed pillows in order to spruce them up as bedding decoration. So the term sham in the bedding world is drawn from the word sham, which, per Merriam-Webster, means a trick that deludes or a hoax; though shams are not insidious in any way, they are a bit of a ruse in that they transform a traditional bed pillow into a decorative one thats more akin to a throw pillow. Pro tip: Cover an old pillow that you dont love to sleep on anymore with a sham to give it a new lease on life!Credit: Courtesy of Serena and LilyCredit: Courtesy of Parachute HomeNow 20% OffCredit: Courtesy of Pottery BarnCredit: Courtesy of Society6How Are Shams Different Than Pillowcases?While pillowcases and shams are both bed pillow coverings, pillowcases are typically made of the same material as flat sheets, and they're designed to be slept on. Shams, on the other hand, are made from more decorative materials; they're to be used primarily for display rather than practical use, though you can use them as support if you're sitting in your bed during the day. (And if you really want to sleep on a pillow covered with a sham, you absolutely could!) They are often washable, given that they're removable.Now down to the nitty gritty: Pillowcases and shams differ in form, too. Pillowcases are typically open on one end, while shams usually have an opening on the back. Its a subtle difference, but a key one!Inti St Clair/Getty ImagesHow Are Shams Different Than Throw Pillows?While shams and throw pillows are both used as bedding embellishments, shams are technically the decorative covering that goes over a pillow, and a throw pillow is actually a pillow itself, usually without any removable coverings. Shams are also designed to cover traditional bed pillow sizes, that is, standard, queen, king, and Euro (a square pillow).While throw pillows are typically much smaller, either small squares, like the ones you might find paired with a sofa, or rectangular like lumbar pillows.How Do I Use Shams to Style My Bed?Shams are often sold in sets with bedspreads (be they quilts, comforters, duvets, or any other type of blanket-like bedding), so many people go with a matchy-matchy look. But you can buy shams individually, too, which gives you much more creative flexibility.They can be a great way to tie together the palette, connecting larger color elements, or introducing texture, says designer Dana Wolter. I love to use a Belgian linen as a custom sham. It holds up well and adds a beautiful texture to the bed.Courtesy of Dana WolterFollowHouse Beautiful on Instagram. Between duvets, inserts, pillowcases, fitted sheets, and so on, there are many components to a well-made bed. And a well-made bed that looks good will often include pillow shams, which are not the same as pillowcases and shouldn't be treated as such. We asked bedding experts to clarify what exactly is a pillow sham and how its different from other types of pillows and cushions.Amy Hoban, chief creative officer of ParachuteHome, director of product development from The Company Store Simply put, a bedding sham is part pillowcase, part throw pillow cover, says Melanie Kaplan, director of product development from The Company Store. It slips over a sleeping pillow and secures in the back or on the side, and its primarily used as a decorative bedding item. So they're not necessary, but they're nice to have! Shams aren't meant to be slept on, although they can be, but they're intended to bring interest to the bed. In addition, some shams may have decorative appliques or embroidery which would make sleeping on them uncomfortable, Kaplan adds. On top of just looking nice, Amy Hoban, Parachutes chief creative officer, says, Incorporating a sham into your bedscape can also serve the purpose of protecting the actual pillowcase that you sleep on each night and preserving its overall cleanliness and quality. Hoban says its perfectly fine to sleep on a sham, but they typically serve the primary purpose of jazzing up your space. Its recommended that shams either be removed from a standard pillow before use or to limit
their use to an accessory or as an extra layer of comfort and support. Plus, Kaplan adds, many shams are embellished with decorative applique and embroidery so it may not be the most comfortable experience. According to Kaplan, a sham typically opens from the back and is more decorative in nature, while a pillowcase slips onto the pillow from the side and is designed to sleep on every night. In addition, shams are typically sized to fit standard size, king size, and Euro pillows, while pillowcases fit only standard and king size pillows, she elaborates. Meanwhile, a decorative pillow cover is smaller in size than a sham so it can be used to add some style to the bed, couch, chair, etc. Like we mentioned earlier, there are varying sham sizes so they fit standard pillows, king-size pillows, and Euro pillows (which are typically 26 x 26). Fabric types used to make shams may include cotton percale, cotton sateen, flannel, linen, cotton voile, and rayon made from bamboo, Kaplan says. Both Hoban and Kaplan agree that if you're not sleeping on your shams, you can get away with washing them once a month, following the directions on the care label, to preserve the material and structure. Hoban adds that if you are sleeping on your shams, We recommend treating them to a wash every seven to ten days, just like you would your sheet set. Let us know what you think!Pillow shams might confuse people as there are a lot of questions flying around about them, ranging from their usage to even what they are. This article answers the most frequently asked questions about pillow shams. The definition of a pillow sham can get tricky. Many people define it as simply a pillowcase. However, pillow shams are much more nuanced!They are an excellent accessory for your bed with many different materials to choose from and function as both great decorative pieces for your bedroom and extra back support.In other words, they are much more than simple pillowcases! They also open in the middle of the back with overlapping fabric or a hidden zipper, as opposed to the basic opening of pillowcases. Pillow shams also feature frilled edges that provide a more nuanced and sophisticated look. Check out the best pillow shams on the market here!Pillow shams are a participating partner in the affluence of the pillows used in the bed. That way, they give the desired look of a nice and neat bed while keeping your pillows secure. Additionally, putting the shams in front of the actual pillows keeps them from being crushed by the regular pillowcases as each is usually designed to fit into the look of the bed they sit on top of, so they have matching patterns and colors.The material used in pillow shams also varies. So, their visual texture can also be different. Instead of having an opening slit on one side of the pillow with extra cloth hanging, pillow shams often have a hidden zipper or an envelope-like closing mechanism.Some pillow shams have additional decorative buttons, zippers, or ties on them.Pillow shams are often used for decorative purposes, mainly to give your bedroom a sense of completeness while keeping your bed neat and classy.They sit on your bed, usually in a group of three or more, and their intricate designs and colors match the rest of your bed. A tasteful assortment of pillow shams, or your beds makeup, as some call them, might be just what your bed needs to feel complete.Definitely not. Despite mainly being utilized as accessories on your bed to give it a sophisticated, complete look, pillow shams have their practical purposes, too.Firstly, and most obviously, they can be used for back support when the bed is being used for reading, relaxing, or any other leisure activity.Pillow shams also cover the pillows used for sleeping, keeping them away from dust and dirt. They also provide a soft and warm embrace whenever you feel like laying on your bed during the day, although it is recommended that they are removed for actual sleep. The word sham basically means something that is not the thing it seems to be, or something deceptive. The term pillow sham most probably originates from the fact that they are intended as decorative and sophisticated pieces, even though they look like plain pillowcases.This deception of pillow shams covering the face of the actual pillow inside with different patterns and colors made of different materials is most likely why they earned the name pillow shams.Not in the sense we are all used to. Unlike the pillows we use to sleep on, pillow shams are mainly intended to be decorative pieces for your bedroom. Their casings are very different from regular pillows, and they are much more decorative than regular pillows. They are usually made of a more decorative fabric, such as silk, linen, or cotton, and they often have a decorative opening in the back, whereas regular pillows have a simple opening in the back. They are also designed to be used as accessories, such as decorative pillows, and even decorative buttons and zippers are sometimes featured on pillow shams.The material used for making them is usually thicker and of higher quality, providing a more durable cover for the cost of comfort, but that is fine since they aren't intended for sleeping anyway.The terms flanged and ruffled refer to the edges of pillow shams and how they are styled. Flanged pillow shams have flat side borders that have been closed tightly to secure the pillow inside. It is also difficult to see the lines of the border, unlike regular pillowcases.Ruffled pillow shams have wavy-looking sides made of a thinner cloth. They both provide a unique look to your pillow shams. Choosing between the two is usually a matter of preference and whether it matches your bedroom or not.Either way, we recommend you stick to one type of pillow sham, as having both types might be too much.Duvets are a type of blanket that covers your entire bed in order to both give it a nice and complete look and protect it from dust. They are usually made from soft and fluffy clothes; some even use feathers as fillings to give an authentic softness.Pillow shams, on the other hand, are for decorating pillows placed on top of the bed. Typically, pillow shams go on top of your duvet to provide the look of a gorgeous, complete bed. We recommend using them both in your bedroom as they complement each other.If you are going for a complete and organized look for your bedroom, your pillow shams should match the duvets. In most cases, pillow shams go directly over the duvet, so they should look like parts of the same set.For this reason, you are going to want them to match. Think of them as a pair of pants and a shirt, to achieve a nice look they need to match or at least complement each other.It is very important that the pillow you put in a sham is fluffy and fills up the sham completely. Even though there are a few alternatives, feather pillows are usually soft enough to fill the corners of your sham, while the fluffiness you need for the pillows you sleep on is not enough to fill the corners or having enough fluff will cause your sham to look limp, which may ruin the waisle look of your bed. As an alternative, you can use a polyester fill, which is great for a poofy look. It is also really durable, which helps with reducing wear over time. We recommend you try both a feather pillow and a polyester fill to compare the two and decide. No matter which type you pick, it is crucial that all the shams on a bed have the same type of pillow inside them to make them look neat and uniform. Questions like what size pillow for sham should I get? arise all the time, so let us break down the pillow sham sizes here. The size of the pillow sham changes in the range of a couple of different types.For instance, the standard sham pillow size is 20 X 26 that is what youre getting as standard pillow sham dimensions. However, some beds are too large for the standard, and thus a bigger sham is needed.King pillow sham size is 20 X 36, which is sure to be a great fit for a king-sized bed. If your bed isnt as large but still larger than a standard one, you might go for a queen pillow sham, which is 20 X 30.Another alternative is the Euro size sham, which is about 26 X 26, so you can go for one of those if you are looking to get a square pillow sham. As long as you know what type of sham you need king, queen, standard, or Euro you will be able to find the right pillow for it.A queen pillow is 20 X 30, whereas a standard sham is 20 X 26. The ten-inch difference between them will not allow the queen pillow to fit into a standard sham. Even though you can try to squeeze the pillow in, we dont recommend straining your sham that much as it will cause damage to it. There are two main ways to make a pillow sham look full. The first and most important one is finding the right size for the pillow you are going to use inside your sham. There are four main standards for sham sizes: king, queen, standard, and Euro. Find out the type of sham you have and pick the corresponding pillow size to ensure your pillow fits the sham nicely.The second thing to do is to decide on its material. Some people have difficulty filling in the corners of their sham. If you have similar issues, we recommend trying a feather pillow, which is fluffy by nature and easy to fill Euro pillow shams might be confusing. There are a lot of questions, such as What is a Euro pillow, pillow sham? or What size pillow is a Euro sham? surrounding them. Let us explain it easily.They are just like other pillow shams. The Euro in their name refers to their size, just like how king and queen refer to different sizes of shams. The size of a European pillow sham is typically 26 X 26, although some stores offer other varieties such as 27 X 22 X 22.Regardless, a Euro sham pillow is distinguished from the other types by its square shape. They are fantastic accessories for your bed and will make your bedroom look complete and classy.You can think of throw pillow
shams as a smaller and more versatile version of Euro pillow shams. They are 20 x 20 pillow shams often used as decor pieces, just like other types of pillow shams.However, their 20 X 20 size is smaller than the other types, making it possible to use them as decorations on couches in addition to beds. Throw pillow shams come in all kinds of patterns and materials, so you can choose the best one that suits your home and decorate your bed or couch with them.Body pillow sham is a special type of pillow sham that is much larger than any other types. Typically made in an I-shape, the size of a body pillow sham is usually 20 X 54. Its long size allows all sorts of benefits for people with back problems, side sleepers, and pregnant women.Arranging the body pillow so it covers your entire back helps your body relax and relieves back pain originating from hard surfaces. They also provide comfort to side sleepers since they are designed to be tucked in between your legs during sleep.Body pillow shams provide style and uniqueness to the body pillows as well as protect the actual pillow from wear and tear, so they are a must-have.A pillow sham usually comes with a zipper. Pillow shams have a variety of types when it comes to their openings, unlike regular pillowcases, which have simple slits on one side. Most pillow shams have a hidden zipper on the side as its aesthetically pleasing and a very easy way to access the pillow. Some, however, do not feature a zipper and instead are designed in an envelope shape on the back. While not as easy as a zipper, an envelope shape also provides easy access to the pillow while looking as stylish, possibly even more so if you want to turn your pillow sham into a pillow sham in the simplest way possible, you can use the excess fabric hanging over the side of the slit opening of your pillowcase. Simply sew the cloth shut to a zipper, and you're done!Pillow shams are usually made of a more decorative fabric, such as silk, linen, or cotton, and they often have a decorative opening in the back, whereas regular pillows have a simple opening in the back. They are also designed to be used as accessories, such as decorative pillows, and even decorative buttons and zippers are sometimes featured on pillow shams.The material used for making them is usually thicker and of higher quality, providing a more durable cover for the cost of comfort, but that is fine since they aren't intended for sleeping anyway.The terms flanged and ruffled refer to the edges of pillow shams and how they are styled. Flanged pillow shams have flat side borders that have been closed tightly to secure the pillow inside. It is also difficult to see the lines of the border, unlike regular pillowcases.Ruffled pillow shams have wavy-looking sides made of a thinner cloth. They both provide a unique look to your pillow shams. Choosing between the two is usually a matter of preference and whether it matches your bedroom or not.Either way, we recommend you stick to one type of pillow sham, as having both types might be too much.Duvets are a type of blanket that covers your entire bed in order to both give it a nice and complete look and protect it from dust. They are usually made from soft and fluffy clothes; some even use feathers as fillings to give an authentic softness.Pillow shams, on the other hand, are for decorating pillows placed on top of the bed. Typically, pillow shams go on top of your duvet to provide the look of a gorgeous, complete bed. We recommend using them both in your bedroom as they complement each other.If you are going for a complete and organized look for your bedroom, your pillow shams should match the duvets. In most cases, pillow shams go directly over the duvet, so they should look like parts of the same set.For this reason, you are going to want them to match. Think of them as a pair of pants and a shirt, to achieve a nice look they need to match or at least complement each other.It is very important that the pillow you put in a sham is fluffy and fills up the sham completely. Even though there are a few alternatives, feather pillows are usually soft enough to fill the corners of your sham, while the fluffiness you need for the pillows you sleep on is not enough to fill the corners or having enough fluff will cause your sham to look limp, which may ruin the waisle look of your bed. As an alternative, you can use a polyester fill, which is great for a poofy look. It is also really durable, which helps with reducing wear over time. We recommend you try both a feather pillow and a polyester fill to compare the two and decide. No matter which type you pick, it is crucial that all the shams on a bed have the same type of pillow inside them to make them look neat and uniform. Questions like what size pillow for sham should I get? arise all the time, so let us break down the pillow sham sizes here. The size of the pillow sham changes in the range of a couple of different types.For instance, the standard sham pillow size is 20 X 26 that is what youre getting as standard pillow sham dimensions. However, some beds are too large for the standard, and thus a bigger sham is needed.King pillow sham size is 20 X 36, which is sure to be a great fit for a king-sized bed. If your bed isnt as large but still larger than a standard one, you might go for a queen pillow sham, which is 20 X 30.Another alternative is the Euro size sham, which is about 26 X 26, so you can go for one of those if you are looking to get a square pillow sham. As long as you know what type of sham you need king, queen, standard, or Euro you will be able to find the right pillow for it.A queen pillow is 20 X 30, whereas a standard sham is 20 X 26. The ten-inch difference between them will not allow the queen pillow to fit into a standard sham. Even though you can try to squeeze the pillow in, we dont recommend straining your sham that much as it will cause damage to it. There are two main ways to make a pillow sham look full. The first and most important one is finding the right size for the pillow you are going to use inside your sham. There are four main standards for sham sizes: king, queen, standard, and Euro. Find out the type of sham you have and pick the corresponding pillow size to ensure your pillow fits the sham nicely.The second thing to do is to decide on its material. Some people have difficulty filling in the corners of their sham. If you have similar issues, we recommend trying a feather pillow, which is fluffy by nature and easy to fill Euro pillow shams might be confusing. There are a lot of questions, such as What is a Euro pillow, pillow sham? or What size pillow is a Euro sham? surrounding them. Let us explain it easily.They are just like other pillow shams. The Euro in their name refers to their size, just like how king and queen refer to different sizes of shams. The size of a European pillow sham is typically 26 X 26, although some stores offer other varieties such as 27 X 22 X 22.Regardless, a Euro sham pillow is distinguished from the other types by its square shape. They are fantastic accessories for your bed and will make your bedroom look complete and classy.You can think of throw pillow shams as a smaller and more versatile version of Euro pillow shams. They are 20 x 20 pillow shams often used as decor pieces, just like other types of pillow shams.However, their 20 X 20 size is smaller than the other types, making it possible to use them as decorations on couches in addition to beds. Throw pillow shams come in all kinds of patterns and materials, so you can choose the best one that suits your home and decorate your bed or couch with them.Body pillow sham is a special type of pillow sham that is much larger than any other types. Typically made in an I-shape, the size of a body pillow sham is usually 20 X 54. Its long size allows all sorts of benefits for people with back problems, side sleepers, and pregnant women.Arranging the body pillow so it covers your entire back helps your body relax and relieves back pain originating from hard surfaces. They also provide comfort to side sleepers since they are designed to be tucked in between your legs during sleep.Body pillow shams provide style and uniqueness to the body pillows as well as protect the actual pillow from wear and tear, so they are a must-have.A pillow sham usually comes with a zipper. Pillow shams have a variety of types when it comes to their openings, unlike regular pillowcases, which have simple slits on one side. Most pillow shams have a hidden zipper on the side as its aesthetically pleasing and a very easy way to access the pillow. Some, however, do not feature a zipper and instead are designed in an envelope shape on the back. While not as easy as a zipper, an envelope shape also provides easy access to the pillow while looking as stylish, possibly even more so if you want to turn your pillow sham into a pillow sham in the simplest way possible, you can use the excess fabric hanging over the side of the slit opening of your pillowcase. Simply sew the cloth shut to a zipper, and you're done!Pillow shams are usually made of a more decorative fabric, such as silk, linen, or cotton, and they often have a decorative opening in the back, whereas regular pillows have a simple opening in the back. They are also designed to be used as accessories, such as decorative pillows, and even decorative buttons and zippers are sometimes featured on pillow shams.The material used for making them is usually thicker and of higher quality, providing a more durable cover for the cost of comfort, but that is fine since they aren't intended for sleeping anyway.The terms flanged and ruffled refer to the edges of pillow shams and how they are styled. Flanged pillow shams have flat side borders that have been closed tightly to secure the pillow inside. It is also difficult to see the lines of the border, unlike regular pillowcases.Ruffled pillow shams have wavy-looking sides made
of a thinner cloth. They both provide a unique look to your pillow shams. Choosing between the two is usually a matter of preference and whether it matches your bedroom or not.Either way, we recommend you stick to one type of pillow sham, as having both types might be too much.Duvets are a type of blanket that covers your entire bed in order to both give it a nice and complete look and protect it from dust. They are usually made from soft and fluffy clothes; some even use feathers as fillings to give an authentic softness.Pillow shams, on the other hand, are for decorating pillows placed on top of the bed. Typically, pillow shams go on top of your duvet to provide the look of a gorgeous, complete bed. We recommend using them both in your bedroom as they complement each other.If you are going for a complete and organized look for your bedroom, your pillow shams should match the duvets. In most cases, pillow shams go directly over the duvet, so they should look like parts of the same set.For this reason, you are going to want them to match. Think of them as a pair of pants and a shirt, to achieve a nice look they need to match or at least complement each other.It is very important that the pillow you put in a sham is fluffy and fills up the sham completely. Even though there are a few alternatives, feather pillows are usually soft enough to fill the corners of your sham, while the fluffiness you need for the pillows you sleep on is not enough to fill the corners or having enough fluff will cause your sham to look limp, which may ruin the waisle look of your bed. As an alternative, you can use a polyester fill, which is great for a poofy look. It is also really durable, which helps with reducing wear over time. We recommend you try both a feather pillow and a polyester fill to compare the two and decide. No matter which type you pick, it is crucial that all the shams on a bed have the same type of pillow inside them to make them look neat and uniform. Questions like what size pillow for sham should I get? arise all the time, so let us break down the pillow sham sizes here. The size of the pillow sham changes in the range of a couple of different types.For instance, the standard sham pillow size is 20 X 26 that is what youre getting as standard pillow sham dimensions. However, some beds are too large for the standard, and thus a bigger sham is needed.King pillow sham size is 20 X 36, which is sure to be a great fit for a king-sized bed. If your bed isnt as large but still larger than a standard one, you might go for a queen pillow sham, which is 20 X 30.Another alternative is the Euro size sham, which is about 26 X 26, so you can go for one of those if you are looking to get a square pillow sham. As long as you know what type of sham you need king, queen, standard, or Euro you will be able to find the right pillow for it.A queen pillow is 20 X 30, whereas a standard sham is 20 X 26. The ten-inch difference between them will not allow the queen pillow to fit into a standard sham. Even though you can try to squeeze the pillow in, we dont recommend straining your sham that much as it will cause damage to it. There are two main ways to make a pillow sham look full. The first and most important one is finding the right size for the pillow you are going to use inside your sham. There are four main standards for sham sizes: king, queen, standard, and Euro. Find out the type of sham you have and pick the corresponding pillow size to ensure your pillow fits the sham nicely.The second thing to do is to decide on its material. Some people have difficulty filling in the corners of their sham. If you have similar issues, we recommend trying a feather pillow, which is fluffy by nature and easy to fill Euro pillow shams might be confusing. There are a lot of questions, such as What is a Euro pillow, pillow sham? or What size pillow is a Euro sham? surrounding them. Let us explain it easily.They are just like other pillow shams. The Euro in their name refers to their size, just like how king and queen refer to different sizes of shams. The size of a European pillow sham is typically 26 X 26, although some stores offer other varieties such as 27 X 22 X 22.Regardless, a Euro sham pillow is distinguished from the other types by its square shape. They are fantastic accessories for your bed and will make your bedroom look complete and classy.You can think of throw pillow shams as a smaller and more versatile version of Euro pillow shams. They are 20 x 20 pillow shams often used as decor pieces, just like other types of pillow shams.However, their 20 X 20 size is smaller than the other types, making it possible to use them as decorations on couches in addition to beds. Throw pillow shams come in all kinds of patterns and materials, so you can choose the best one that suits your home and decorate your bed or couch with them.Body pillow sham is a special type of pillow sham that is much larger than any other types. Typically made in an I-shape, the size of a body pillow sham is usually 20 X 54. Its long size allows all sorts of benefits for people with back problems, side sleepers, and pregnant women.Arranging the body pillow so it covers your entire back helps your body relax and relieves back pain originating from hard surfaces. They also provide comfort to side sleepers since they are designed to be tucked in between your legs during sleep.Body pillow shams provide style and uniqueness to the body pillows as well as protect the actual pillow from wear and tear, so they are a must-have.A pillow sham usually comes with a zipper. Pillow shams have a variety of types when it comes to their openings, unlike regular pillowcases, which have simple slits on one side. Most pillow shams have a hidden zipper on the side as its aesthetically pleasing and a very easy way to access the pillow. Some, however, do not feature a zipper and instead are designed in an envelope shape on the back. While not as easy as a zipper, an envelope shape also provides easy access to the pillow while looking as stylish, possibly even more so if you want to turn your pillow sham into a pillow sham in the simplest way possible, you can use the excess fabric hanging over the side of the slit opening of your pillowcase. Simply sew the cloth shut to a zipper, and you're done!Pillow shams are usually made of a more decorative fabric, such as silk, linen, or cotton, and they often have a decorative opening in the back, whereas regular pillows have a simple opening in the back. They are also designed to be used as accessories, such as decorative pillows, and even decorative buttons and zippers are sometimes featured on pillow shams.The material used for making them is usually thicker and of higher quality, providing a more durable cover for the cost of comfort, but that is fine since they aren't intended for sleeping anyway.The terms flanged and ruffled refer to the edges of pillow shams and how they are styled. Flanged pillow shams have flat side borders that have been closed tightly to secure the pillow inside. It is also difficult to see the lines of the border, unlike regular pillowcases.Ruffled pillow shams have wavy-looking sides made of a thinner cloth. They both provide a unique look to your pillow shams. Choosing between the two is usually a matter of preference and whether it matches your bedroom or not.Either way, we recommend you stick to one type of pillow sham, as having both types might be too much.Duvets are a type of blanket that covers your entire bed in order to both give it a nice and complete look and protect it from dust. They are usually made from soft and fluffy clothes; some even use feathers as fillings to give an authentic softness.Pillow shams, on the other hand, are for decorating pillows placed on top of the bed. Typically, pillow shams go on top of your duvet to provide the look of a gorgeous, complete bed. We recommend using them both in your bedroom as they complement each other.If you are going for a complete and organized look for your bedroom, your pillow shams should match the duvets. In most cases, pillow shams go directly over the duvet, so they should look like parts of the same set.For this reason, you are going to want them to match. Think of them as a pair of pants and a shirt, to achieve a nice look they need to match or at least complement each other.It is very important that the pillow you put in a sham is fluffy and fills up the sham completely. Even though there are a few alternatives, feather pillows are usually soft enough to fill the corners of your sham, while the fluffiness you need for the pillows you sleep on is not enough to fill the corners or having enough fluff will cause your sham to look limp, which may ruin the waisle look of your bed. As an alternative, you can use a polyester fill, which is great for a poofy look. It is also really durable, which helps with reducing wear over time. We recommend you try both a feather pillow and a polyester fill to compare the two and decide. No matter which type you pick, it is crucial that all the shams on a bed have the same type of pillow inside them to make them look neat and uniform. Questions like what size pillow for sham should I get? arise all the time, so let us break down the pillow sham sizes here. The size of the pillow sham changes in the range of a couple of different types.For instance, the standard sham pillow size is 20 X 26 that is what youre getting as standard pillow sham dimensions. However, some beds are too large for the standard, and thus a bigger sham is needed.King pillow sham size is 20 X 36, which is sure to be a great fit for a king-sized bed. If your bed isnt as large but still larger than a standard one, you might go for a queen pillow sham, which is 20 X 30.Another alternative is the Euro size sham, which is about 26 X 26, so you can go for one of those if you are looking to get a square pillow sham. As long as you know what type of sham you
need king, queen, standard, or Euro you will be able to find the right pillow for it.A queen pillow is 20 X 30, whereas a standard sham is 20 X 26. The ten-inch difference between them will not allow the queen pillow to fit into a standard sham. Even though you can try to squeeze the pillow in, we dont recommend straining your sham that much as it will cause damage to it. There are two main ways to make a pillow sham look full. The first and most important one is finding the right size for the pillow you are going to use inside your sham. There are four main standards for sham sizes: king, queen, standard, and Euro. Find out the type of sham you have and pick the corresponding pillow size to ensure your pillow fits the sham nicely.The second thing to do is to decide on its material. Some people have difficulty filling in the corners of their sham. If you have similar issues, we recommend trying a feather pillow, which is fluffy by nature and easy to fill Euro pillow shams might be confusing. There are a lot of questions, such as What is a Euro pillow, pillow sham? or What size pillow is a Euro sham? surrounding them. Let us explain it easily.They are just like other pillow shams. The Euro in their name refers to their size, just like how king and queen refer to different sizes of shams. The size of a European pillow sham is typically 26 X 26, although some stores offer other varieties such as 27 X 22 X 22.Regardless, a Euro sham pillow is distinguished from the other types by its square shape. They are fantastic accessories for your bed and will make your bedroom look complete and classy.You can think of throw pillow shams as a smaller and more versatile version of Euro pillow shams. They are 20 x 20 pillow shams often used as decor pieces, just like other types of pillow shams.However, their 20 X 20 size is smaller than the other types, making it possible to use them as decorations on couches in addition to beds. Throw pillow shams come in all kinds of patterns and materials, so you can choose the best one that suits your home and decorate your bed or couch with them.Body pillow sham is a special type of pillow sham that is much larger than any other types. Typically made in an I-shape, the size of a body pillow sham is usually 20 X 54. Its long size allows all sorts of benefits for people with back problems, side sleepers, and pregnant women.Arranging the body pillow so it covers your entire back helps your body relax and relieves back pain originating from hard surfaces. They also provide comfort to side sleepers since they are designed to be tucked in between your legs during sleep.Body pillow shams provide style and uniqueness to the body pillows as well as protect the actual pillow from wear and tear, so they are a must-have.A pillow sham usually comes with a zipper. Pillow shams have a variety of types when it comes to their openings, unlike regular pillowcases, which have simple slits on one side. Most pillow shams have a hidden zipper on the side as its aesthetically pleasing and a very easy way to access the pillow. Some, however, do not feature a zipper and instead are designed in an envelope shape on the back. While not as easy as a zipper, an envelope shape also provides easy access to the pillow while looking as stylish, possibly even more so if you want to turn your pillow sham into a pillow sham in the simplest way possible, you can use the excess fabric hanging over the side of the slit opening of your pillowcase. Simply sew the cloth shut to a zipper, and you're done!Pillow shams are usually made of a more decorative fabric, such as silk, linen, or cotton, and they often have a decorative opening in the back, whereas regular pillows have a simple opening in the back. They are also designed to be used as accessories, such as decorative pillows, and even decorative buttons and zippers are sometimes featured on pillow shams.The material used for making them is usually thicker and of higher quality, providing a more durable cover for the cost of comfort, but that is fine since they aren't intended for sleeping anyway.The terms flanged and ruffled refer to the edges of pillow shams and how they are styled. Flanged pillow shams have flat side borders that have been closed tightly to secure the pillow inside. It is also difficult to see the lines of the border, unlike regular pillowcases.Ruffled pillow shams have wavy-looking sides made of a thinner cloth. They both provide a unique look to your pillow shams. Choosing between the two is usually a matter of preference and whether it matches your bedroom or not.Either way, we recommend you stick to one type of pillow sham, as having both types might be too much.Duvets are a type of blanket that covers your entire bed in order to both give it a nice and complete look and protect it from dust. They are usually made from soft and fluffy clothes; some even use feathers as fillings to give an authentic softness.Pillow shams, on the other hand, are for decorating pillows placed on top of the bed. Typically, pillow shams go on top of your duvet to provide the look of a gorgeous, complete bed. We recommend using them both in your bedroom as they complement each other.If you are going for a complete and organized look for your bedroom, your pillow shams should match the duvets. In most cases, pillow shams go directly over the duvet, so they should look like parts of the same set.For this reason, you are going to want them to match. Think of them as a pair of pants and a shirt, to achieve a nice look they need to match or at least complement each other.It is very important that the pillow you put in a sham is fluffy and fills up the sham completely. Even though there are a few alternatives, feather pillows are usually soft enough to fill the corners of your sham, while the fluffiness you need for the pillows you sleep on is not enough to fill the corners or having enough fluff will cause your sham to look limp, which may ruin the waisle look of your bed. As an alternative, you can use a polyester fill, which is great for a poofy look. It is also really durable, which helps with reducing wear over time. We recommend you try both a feather pillow and a polyester fill to compare the two and decide. No matter which type you pick, it is crucial that all the shams on a bed have the same type of pillow inside them to make them look neat and uniform. Questions like what size pillow for sham should I get? arise all the time, so let us break down the pillow sham sizes here.

