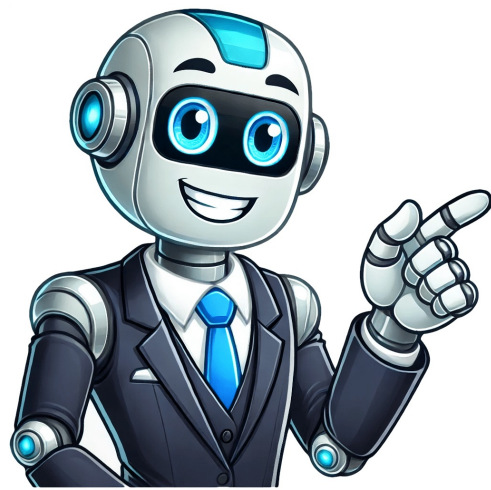


Continue



the manual for the Samsung Galaxy A03 here, for free. This manual comes under the category smartphones and has been rated by 28 people with an average of a 8.7. This manual is available in the following languages: English. Do you have a question about the Samsung Galaxy A03 or do you need help?Ask your question hereBelow you will find the product specifications and the manual specifications of the Samsung Galaxy A03.The Samsung Galaxy A03 is a smartphone featuring a 6.5-inch LCD display with a resolution of 720 x 1600 pixels. The display is equipped with touchscreen functionality, allowing for user interaction. It also utilizes Panda Glass technology, which provides enhanced protection against scratches and damage. With a contrast ratio of 1200:1, the Samsung Galaxy A03 ensures a vibrant and clear visual experience. The device has a bar form factor and is made of plastic, making it lightweight and easy to handle. It has an International Protection (IP) code of IP52, indicating a resistance to dust and water splashes. The smartphone offers face recognition technology, enabling users to securely unlock their device with a simple glance. The display boasts a brightness level of 400 cd/m², ensuring good visibility in various lighting conditions. It has a maximum refresh rate of 60 Hz, providing smooth navigation and interactions. Overall, the Samsung Galaxy A03 presents a solid set of specifications. Its 6.5-inch display with LCD technology delivers sharp visuals, while the use of Panda Glass enhances durability. The inclusion of face recognition technology enhances the device's security capabilities. With a brightness level of 400 cd/m², the screen remains visible even in bright environments. The device's plastic housing material keeps it lightweight, and its IP52 rating provides some protection against dust and water splashes. Processor frequency 1.6 GHzBrandSamsungModelGalaxy A03 | SM-A035GZKEUEProductsmartphoneEAN8806092886773LanguageEnglishFileTypeUser manual (PDF), Safety instructions (PDF)Display diagonal 6.5 "Display resolution 720 x 1600 pixelsDisplay glass type Panda GlassDisplay number of colors 16 million colorsContrast ratio (typical) 1200:1Display brightness 400 cd/m²Maximum refresh rate 60 HzPixel density 269 ppiScreen shape FlatRounded display corners YesPanel type LCDTouchscreen YesRepairability index 8.0Form factor BarProduct code BlackInternational Protection (IP) code IP52Housing material PlasticGraphics card Mali-G57Face recognition YesProcessor frequency 1.6 GHzProcessor family UnisocProcessor model UMS9230Processor cores 8Position location YesGPS (satellite) YesRAM capacity 4 GBInternal storage capacity 64 GBUser memory 46.9 GBCompatible memory cards MicroSD (TransFlash)Maximum memory card size 1000 GBPlatform AndroidOperating system installed Android 11Rear camera type Dual cameraRear camera resolution (numeric) 48 MPSecond rear camera resolution (numeric) 2 MPRear camera aperture number 1.8Second rear camera aperture number 2.4Front camera type Single cameraFront camera resolution (numeric) 5 MPFront camera aperture number 2.2Rear camera flash YesFlash type LEDVideo capture resolution (max) 1920 x 1080 pixelsMaximum frame rate 30 fpsResolution at capture speed 1920x1080@30fpsTime lapse mode YesNight mode YesPanorama YesVideo recording modes 1080pBattery capacity 5000 mAhBattery technology Lithium-Ion (Li-Ion)Battery voltage 3.85 VBattery recharge time 4 hBattery weight 67.9 gRemovable battery NoTalk time (3G) -hStandby time (3G) -hProximity sensor YesAccelerometer sensor YesAmbient light sensor YesWeight 199 gWidth 75.9 mmDepth 9.2 mmPackage weight 82.8 mmPackage depth 52.4 mmPackage height 172 mmPackage weight 411 gHeight 166.6 mmQuick start guide YesWarranty card YesCables included USB3M card ejector pin YesSIM card capability Dual SIMMobile network generation 4G5M card type NanoSIM3G standards UMTS4G standard LTE-TDD & LTE-FDDWi-Fi YesWi-Fi standards 802.11a, 802.11b, 802.11g, 802.11n, Wi-Fi 4 (802.11n), Wi-Fi 5 (802.11ac)Bluetooth YesBluetooth version 5.0Wi-Fi Direct YesNear Field Communication (NFC) YesVoice over LTE (VoLTE) supported Yes3G bands supported 850,900,2100 MHz4G bands supported 700,850,900,1800,2100,2300,2500,2600 MHzTethering (modem-mode) YesSubscription type No subscriptionUSB port YesUSB connector type Micro-USBHeadphone connectivity 3.5 mmANT+ enabled NoUSB version 2.0Head SAR (EU) 0.79 W/kgBody SAR (EU) 0.84 W/kgExtremities SAR (EU) 2.18 W/kgSpeakers MonoAudio system Dolby Atmos show moreCan't find the answer to your question in the FAQs about the Samsung Galaxy A03 below.To enable Dark Mode on your Samsung Galaxy A03, go to Settings, then Display, and select Dark Mode. You can choose to enable it permanently or set it to activate based on the time of day or battery level.To set up the fingerprint sensor on your Samsung Galaxy A03, go to Settings, then Biometrics and Security, and select Fingerprint Scanner. Follow the on-screen instructions to register your fingerprint.To take a screenshot on your Samsung Galaxy A03, press and hold the Power button and the Volume Down button simultaneously for a few seconds. The screenshot will be captured and saved in your Gallery or Screenshots folder.To transfer files from your computer to your Samsung Galaxy A03, connect your phone to the computer using a USB cable. On your phone, swipe down the notification panel, tap on "USB for charging," and select "File transfer" or "Transfer files." Your phone will be recognized as a removable storage device on your computer, allowing you to copy and paste files into the appropriate folder.To extend the battery life of your Samsung Galaxy A03, you can try optimizing your device's settings. Lowering screen brightness, disabling unnecessary background processes, and closing unused apps can help conserve battery power. Additionally, enabling power-saving modes, such as the "Medium power saving" or "Maximum power saving" modes, can further extend the battery life.Yes, the Samsung Galaxy A03 has a touchscreen. This allows users to easily interact with the phone through taps, swipes, and gestures. The display resolution of the Samsung Galaxy A03 is 720 x 1600 pixels. While this may not be the highest resolution available, it still provides clear and crisp visuals for everyday use.Yes, the Samsung Galaxy A03 features face recognition. This feature allows users to quickly and securely unlock their phone using facial recognition technology. The maximum refresh rate of the Samsung Galaxy A03 is 60 Hz. While this may not be as high as some flagship devices with higher refresh rates, it still provides a smooth and responsive user experience.The Samsung Galaxy A03 has a weight of 199 g.The Samsung Galaxy A03 has a height of 166.6 mm.The Samsung Galaxy A03 has a width of 75.9 mm.The Samsung Galaxy A03 has a depth of 9.2 mm.Most Samsung model phones can be reset by using a key combination of volume + button, power on/off button and home button at startup.The screen size of the Samsung Galaxy A03 is 6.5 ".The size of your smartphone is usually expressed in inches, 1 inch is 2.54 centimetres. The size is the diagonal size of your smartphone, so you measure the screen from bottom left to top right.The screen resolution of the Samsung Galaxy A03 is 720 x 1600 pixels. It is possible to use a SIM card adapter. Insert the too small SIM card into the adapter and then place the adapter in the phone.The Samsung Galaxy A03 has a Micro-USB connection.The Samsung Galaxy A03 uses Android as the operating system.It takes 4 h to charge the battery of the Samsung Galaxy A03.The Samsung Galaxy A03 has 64 GB storage capacity.IMEI stands for "International Mobile Equipment Identity". This is a unique fifteen-digit number that distinguishes your Samsung phone from other phones.Make sure the batteries of your smartphone do not get too hot, in that case there is a very small chance that the battery will explode.Yes, the manual of the Samsung Galaxy A03 is available in English | Is your question not listed?Ask your question herePage 3View the manual for the Samsung Galaxy A03 here, for free. This manual comes under the category smartphones and has been rated by 28 people with an average of a 8.7. This manual is available in the following languages: English. Do you have a question about the Samsung Galaxy A03 or do you need help?Ask your question hereBelow you will find the product specifications and the manual specifications of the Samsung Galaxy A03.The Samsung Galaxy A03 is a smartphone featuring a 6.5-inch LCD display with a resolution of 720 x 1600 pixels. The display is equipped with touchscreen functionality, allowing for user interaction. It also utilizes Panda Glass technology, which provides enhanced protection against scratches and damage. With a contrast ratio of 1200:1, the Samsung Galaxy A03 ensures a vibrant and clear visual experience. The device has a bar form factor and is made of plastic, making it lightweight and easy to handle. It has an International Protection (IP) code of IP52, indicating a resistance to dust and water splashes. The smartphone offers face recognition technology, enabling users to securely unlock their device with a simple glance. The display boasts a brightness level of 400 cd/m², ensuring good visibility in various lighting conditions. It has a maximum refresh rate of 60 Hz, providing smooth navigation and interactions. Overall, the Samsung Galaxy A03 presents a solid set of specifications. Its 6.5-inch display with LCD technology delivers sharp visuals, while the use of Panda Glass enhances durability. The inclusion of face recognition technology enhances the device's security capabilities. With a brightness level of 400 cd/m², the screen remains visible even in bright environments. The device's plastic housing material keeps it lightweight, and its IP52 rating provides some protection against dust and water splashes. Processor frequency 1.6 GHzBrandSamsungModelGalaxy A03 | SM-A035GZKEUEProductsmartphoneEAN8806092886773LanguageEnglishFileTypeUser manual (PDF), Safety instructions (PDF)Display diagonal 6.5 "Display resolution 720 x 1600 pixelsDisplay glass type Panda GlassDisplay number of colors 16 million colorsContrast ratio (typical) 1200:1Display brightness 400 cd/m²Maximum refresh rate 60 HzPixel density 269 ppiScreen shape FlatRounded display corners YesPanel type LCDTouchscreen YesRepairability index 8.0Form factor BarProduct code BlackInternational Protection (IP) code IP52Housing material PlasticGraphics card Mali-G57Face recognition YesProcessor frequency 1.6 GHzProcessor family UnisocProcessor model UMS9230Processor cores 8Position location YesGPS (satellite) YesRAM capacity 4 GBInternal storage capacity 64 GBUser memory 46.9 GBCompatible memory cards MicroSD (TransFlash)Maximum memory card size 1000 GBPlatform AndroidOperating system installed Android 11Rear camera type Dual cameraRear camera resolution (numeric) 48 MPSecond rear camera resolution (numeric) 2 MPRear camera aperture number 1.8Second rear camera aperture number 2.4Front camera type Single cameraFront camera resolution (numeric) 5 MPFront camera aperture number 2.2Rear camera flash YesFlash type LEDVideo capture resolution (max) 1920 x 1080 pixelsMaximum frame rate 30 fpsResolution at capture speed 1920x1080@30fpsTime lapse mode YesNight mode YesPanorama YesVideo recording modes 1080pBattery capacity 5000 mAhBattery technology Lithium-Ion (Li-Ion)Battery voltage 3.85 VBattery recharge time 4 hBattery weight 67.9 gRemovable battery NoTalk time (3G) -hStandby time (3G) -hProximity sensor YesAccelerometer sensor YesAmbient light sensor YesWeight 199 gWidth 75.9 mmDepth 9.2 mmPackage weight 82.8 mmPackage height 172 mmPackage weight 411 gHeight 166.6 mmQuick start guide YesWarranty card YesCables included USB3M card ejector pin YesSIM card capability Dual SIMMobile network generation 4G5M card type NanoSIM3G standards UMTS4G standard LTE-TDD & LTE-FDDWi-Fi YesWi-Fi standards 802.11a, 802.11b, 802.11g, 802.11n, Wi-Fi 4 (802.11n), Wi-Fi 5 (802.11ac)Bluetooth YesBluetooth version 5.0Wi-Fi Direct YesNear Field Communication (NFC) YesVoice over LTE (VoLTE) supported Yes3G bands supported 850,900,2100 MHz4G bands supported 700,850,900,1800,2100,2300,2500,2600 MHzTethering (modem-mode) YesSubscription type No subscriptionUSB port YesUSB connector type Micro-USBHeadphone connectivity 3.5 mmANT+ enabled NoUSB version 2.0Head SAR (EU) 0.79 W/kgBody SAR (EU) 0.84 W/kgExtremities SAR (EU) 2.18 W/kgSpeakers MonoAudio system Dolby Atmos show moreCan't find the answer to your question in the FAQs about the Samsung Galaxy A03 below.To enable Dark Mode on your Samsung Galaxy A03, go to Settings, then Display, and select Dark Mode. You can choose to enable it permanently or set it to activate based on the time of day or battery level.To set up the fingerprint sensor on your Samsung Galaxy A03, go to Settings, then Biometrics and Security, and select Fingerprint Scanner. Follow the on-screen instructions to register your fingerprint.To take a screenshot on your Samsung Galaxy A03, press and hold the Power button and the Volume Down button simultaneously for a few seconds. The screenshot will be captured and saved in your Gallery or Screenshots folder.To transfer files from your computer to your Samsung Galaxy A03, connect your phone to the computer using a USB cable. On your phone, swipe down the notification panel, tap on "USB for charging," and select "File transfer" or "Transfer files." Your phone will be recognized as a removable storage device on your computer, allowing you to copy and paste files into the appropriate folder.To extend the battery life of your Samsung Galaxy A03, you can try optimizing your device's settings. Lowering screen brightness, disabling unnecessary background processes, and closing unused apps can help conserve battery power. Additionally, enabling power-saving modes, such as the "Medium power saving" or "Maximum power saving" modes, can further extend the battery life.Yes, the Samsung Galaxy A03 has a touchscreen. This allows users to easily interact with the phone through taps, swipes, and gestures. The display resolution of the Samsung Galaxy A03 is 720 x 1600 pixels. While this may not be the highest resolution available, it still provides clear and crisp visuals for everyday use.Yes, the Samsung Galaxy A03 features face recognition. This feature allows users to quickly and securely unlock their phone using facial recognition technology. The maximum refresh rate of the Samsung Galaxy A03 is 60 Hz. While this may not be as high as some flagship devices with higher refresh rates, it still provides a smooth and responsive user experience.The Samsung Galaxy A03 has a weight of 199 g.The Samsung Galaxy A03 has a height of 166.6 mm.The Samsung Galaxy A03 has a width of 75.9 mm.The Samsung Galaxy A03 has a depth of 9.2 mm.Most Samsung model phones can be reset by using a key combination of volume + button, power on/off button and home button at startup.The screen size of the Samsung Galaxy A03 is 6.5 ".The size of your smartphone is usually expressed in inches, 1 inch is 2.54 centimetres. The size is the diagonal size of your smartphone, so you measure the screen from bottom left to top right.The screen resolution of the Samsung Galaxy A03 is 720 x 1600 pixels. It is possible to use a SIM card adapter. Insert the too small SIM card into the adapter and then place the adapter in the phone.The Samsung Galaxy A03 has a Micro-USB connection.The Samsung Galaxy A03 uses Android as the operating system.It takes 4 h to charge the battery of the Samsung Galaxy A03.The Samsung Galaxy A03 has 64 GB storage capacity.IMEI stands for "International Mobile Equipment Identity". This is a unique fifteen-digit number that distinguishes your Samsung phone from other phones.Make sure the batteries of your smartphone do not get too hot, in that case there is a very small chance that the battery will explode.Yes, the manual of the Samsung Galaxy A03 is available in English | Is your question not listed?Ask your question herePage 3View the manual for the Samsung Galaxy A03 here, for free. This manual comes under the category smartphones and has been rated by 28 people with an average of a 8.7. This manual is available in the following languages: English. Do you have a question about the Samsung Galaxy A03 or do you need help?Ask your question hereBelow you will find the product specifications and the manual specifications of the Samsung Galaxy A03.The Samsung Galaxy A03 is a smartphone featuring a 6.5-inch LCD display with a resolution of 720 x 1600 pixels. The display is equipped with touchscreen functionality, allowing

You may have a question about the Samsung Galaxy A03 or do you need help?Ask your question hereBelow you will find the product specifications and the manual specifications of the Samsung Galaxy A03.The Samsung Galaxy A03 is a smartphone featuring a 6.5-inch LCD display with a resolution of 720 x 1600 pixels. The display is equipped with touchscreen functionality, allowing for easy navigation and interaction. The device has a bar form factor and is made of plastic, making it lightweight and easy to handle. It has an International Protection (IP) code of IP52, indicating a resistance to dust and water splashes. The smartphone offers face recognition technology, enabling users to securely unlock their device with a simple glance. The display boasts a brightness level of 400 cd/m², ensuring good visibility in various lighting conditions. It has a maximum refresh rate of 60 Hz, providing smooth navigation and interactions. Overall, the Samsung Galaxy A03 presents a solid set of specifications. Its 6.5-inch display with LCD technology delivers sharp visuals, while the use of Panda Glass enhances durability. The inclusion of face recognition enhances the device's security capabilities. With a brightness level of 400 cd/m², the screen remains visible even in bright environments. The device's plastic housing material keeps it lightweight, and its IP52 rating provides some protection against dust and water splashes.Processor frequency 1.6 GHzBrandSamsungModelGalaxy A03 | SM-A035GZKGUEUEProductsSmartphoneEAN8806092886773LanguageEnglishFiletypeUser manual (PDF), Safety instructions (PDF)Display diagonal 6.5 "Display resolution 720 x 1600 pixelsDisplay glass type Panda GlassDisplay number of colors 16 million colorsContrast ratio (typical) 1200:1Display brightness 400 cd/m²Maximum refresh rate 60 HzPixel density 269 ppiScreen shape FlatRounded display corners YesPanel type LCDTouchscreen YesRepairability index 8.0Form factor BarProduct color BlackInternational Protection (IP) code IP52Housing material PlasticGraphics card Mali-G57F6face recognition YesProcessor frequency 1.6 GHzProcessor family UnisocProcessor model UMS9230Processor cores 8Position location YesGPS (satellite) YesRAM capacity 4 GBInternal storage capacity 64 GBUser memory 46.9 GBCompatible memory cards MicroSD (TransFlash)Maximum memory card size 1000 GBPlatform AndroidOperating system installed Android 11Rear camera type Dual cameraRear camera resolution (numeric) 48 MPSecond rear camera resolution (numeric) 2 MPRear camera aperture number 1.8Second rear camera aperture number 2.4Front camera type Single cameraFront camera resolution (numeric) 5 MPFront camera aperture number 2.2Rear camera flash YesFlash type LEDVideo capture resolution (max) 1920 x 1080 pixelsMaximum frame rate 30 fpsResolution at capture speed 1920x1080@30fpsTime lapse mode YesNight mode YesPanorama YesVideo recording modes 1080pBattery capacity 5000 mAhBattery technology Lithium-Ion (Li-Ion)Battery voltage 3.85 VBattery recharge time 4 hBattery weight 67.9 gRemovable battery NoTalk time (3G) - hStandby time (3G) - hProximity sensor YesAccelerometer YesAmbient light sensor YesWeight 199 gWidth 75.9 mmDepth 9.2 mmPackage width 82.8 mmPackage depth 52.4 mmPackage height 172 mmPackage weight 41.1 gHeight 166.6 mmQuick start guide YesWarranty card YesCables included USB5M card ejector pin YesSIM card capability Dual SIMMobile network generation 4GSM card type NanoSIM3G standards UMTS3G standards LTE-TDD & LTE-FDDWi-Fi YesWi-Fi standards 802.11a, 802.11b, 802.11g, Wi-Fi 4 (802.11n), Wi-Fi 5 (802.11ac)Bluetooth YesBluetooth version 5.0Wi-Fi Direct YesNear Field Communication (NFC) YesVoice over LTE (VoLTE) supported Yes3G bands supported 850,900,2100 MHz4G bands supported 700,850,900,1800,2100,2300,2500,2600 MHzTethering (modem-mode) YesUSB subscription type No subscriptionUSB port YesUSB connector type Micro-USBHeadphone connectivity 3.5 mmANT+ enabled NoUSB version 2.0Head SAR (EU) 0.79 W/kgBody SAR (EU) 0.84 W/kgExtremities SAR (EU) 2.18 W/kgSpeakers MonoAudio system Dolby Atmos show moreCan't find the answer to your question in the manual? You may find the answer to your question in the FAQs about the Samsung Galaxy A03 below.To enable Dark Mode on your Samsung Galaxy A03, go to Settings, then Display, and select Dark Mode. You can choose to enable it permanently or set it to activate based on the time of day or battery level.To set up the fingerprint sensor on your Samsung Galaxy A03, go to Settings, then Biometrics and Security, and select Fingerprint Scanner. Follow the on-screen instructions to register your fingerprint.To take a screenshot on your Samsung Galaxy A03, press and hold the Power button and the Volume Down button simultaneously for a few seconds. The screenshot will be captured and saved in your Gallery or Screenshots folder.To transfer files from your computer to your Samsung Galaxy A03, connect your phone to the computer using a USB cable. On your phone, swipe down the notification panel, tap on "USB for charging," and select "File transfer" or "Transfer files." Your phone will be recognized as a removable storage device on your computer, allowing you to copy and paste files into the appropriate folder.To extend the battery life of your Samsung Galaxy A03, you can try optimizing your device's settings. Lowering screen brightness, disabling unnecessary background processes, and closing unused apps can help conserve battery power. Additionally, enabling power-saving modes, such as the "Medium power saving" or "Maximum power saving" modes, can further extend the battery life.Yes, the Samsung Galaxy A03 has a touchscreen. This allows users to easily interact with the phone through taps, swipes, and gestures.The display resolution of the Samsung Galaxy A03 is 720 x 1600 pixels. While this may not be the highest resolution available, it still provides clear and crisp visuals for everyday use.Yes, the Samsung Galaxy A03 is made of plastic. This material choice helps to keep the device lightweight and affordable, though it may not offer the same premium feel as devices made of metal or glass.Yes, the Samsung Galaxy A03 features face recognition. This feature allows users to quickly and securely unlock their phone using facial recognition technology.The maximum refresh rate of the Samsung Galaxy A03 is 60 Hz. While this may not be as high as some flagship devices with higher refresh rates, it still provides a smooth and responsive user experience.The Samsung Galaxy A03 has a weight of 199 g.The Samsung Galaxy A03 has a height of 166.6 mm.The Samsung Galaxy A03 has a width of 75.9 mm.The Samsung Galaxy A03 has a depth of 9.2 mm.Most Samsung model phones can be reset by using a key combination of volume + button, power on/off button and home button at startup.The screen size of the Samsung Galaxy A03 is 6.5 ".The size of your smartphone is usually expressed in inches, 1 inch is 2.54 centimetres. The size is the diagonal size of your smartphone, so you measure the screen from bottom left to top right.The screen resolution of the Samsung Galaxy A03 is 720 x 1600 pixels. It is possible to use a SIM card adapter. Insert the too small SIM card into the adapter and then place the adapter in the phone.The Samsung Galaxy A03 uses Android as the operating system.It takes 4 h to charge the battery of the Samsung Galaxy A03.The Samsung Galaxy A03 has 64 GB storage capacity.IMEI stands for 'International Mobile Equipment Identity'. This is a unique fifteen-digit number that distinguishes your Samsung phone from other phones.Make sure the batteries of your smartphone do not get too hot, in that case there is a very small chance that the battery will explode.Yes, the manual of the Samsung Galaxy A03 is available in English. Is your question not listed? Ask your question herePage 10View the manual for the Samsung Galaxy A03 here, for free. This manual comes under the category smartphones and has been rated by 28 people with an average of a 8.7. This manual is available in the following languages: English. Do you have a question about the Samsung Galaxy A03 or do you need help?Ask your question hereBelow you will find the product specifications and the manual specifications of the Samsung Galaxy A03.The Samsung Galaxy A03 is a smartphone featuring a 6.5-inch LCD display with a resolution of 720 x 1600 pixels. The display is equipped with touchscreen functionality, allowing for easy user interaction. It also utilizes Panda Glass technology, which provides enhanced protection against scratches and damage. With a contrast ratio of 1200:1, the Samsung Galaxy A03 ensures a vibrant and clear visual experience. The device has a bar form factor and is made of plastic, making it lightweight and easy to handle. It has an International Protection (IP) code of IP52, indicating a resistance to dust and water splashes. The smartphone offers face recognition technology, enabling users to securely unlock their device with a simple glance. The display boasts a brightness level of 400 cd/m², ensuring good visibility in various lighting conditions. It has a maximum refresh rate of 60 Hz, providing smooth navigation and interactions. Overall, the Samsung Galaxy A03 presents a solid set of specifications. Its 6.5-inch display with LCD technology delivers sharp visuals, while the use of Panda Glass enhances durability. The inclusion of face recognition enhances the device's security capabilities. With a brightness level of 400 cd/m², the screen remains visible even in bright environments. The device's plastic housing material keeps it lightweight, and its IP52 rating provides some protection against dust and water splashes.Processor frequency 1.6 GHzBrandSamsungModelGalaxy A03 | SM-A035GZKGUEUEProductsSmartphoneEAN8806092886773LanguageEnglishFiletypeUser manual (PDF), Safety instructions (PDF)Display diagonal 6.5 "Display resolution 720 x 1600 pixelsDisplay glass type Panda GlassDisplay number of colors 16 million colorsContrast ratio (typical) 1200:1Display brightness 400 cd/m²Maximum refresh rate 60 HzPixel density 269 ppiScreen shape FlatRounded display corners YesPanel type LCDTouchscreen YesRepairability index 8.0Form factor BarProduct color BlackInternational Protection (IP) code IP52Housing material PlasticGraphics card Mali-G57F6face recognition YesProcessor frequency 1.6 GHzProcessor family UnisocProcessor model UMS9230Processor cores 8Position location YesGPS (satellite) YesRAM capacity 4 GBInternal storage capacity 64 GBUser memory 46.9 GBCompatible memory cards MicroSD (TransFlash)Maximum memory card size 1000 GBPlatform AndroidOperating system installed Android 11Rear camera type Dual cameraRear camera resolution (numeric) 48 MPSecond rear camera resolution (numeric) 2 MPRear camera aperture number 1.8Second rear camera aperture number 2.4Front camera type Single cameraFront camera resolution (numeric) 5 MPFront camera aperture number 2.2Rear camera flash YesFlash type LEDVideo capture resolution (max) 1920 x 1080 pixelsMaximum frame rate 30 fpsResolution at capture speed 1920x1080@30fpsTime lapse mode YesNight mode YesPanorama YesVideo recording modes 1080pBattery capacity 5000 mAhBattery technology Lithium-Ion (Li-Ion)Battery voltage 3.85 VBattery recharge time 4 hBattery weight 67.9 gRemovable battery NoTalk time (3G) - hStandby time (3G) - hProximity sensor YesAccelerometer YesAmbient light sensor YesWeight 199 gWidth 75.9 mmDepth 9.2 mmPackage width 82.8 mmPackage height 172 mmPackage weight 41.1 gHeight 166.6 mmQuick start guide YesWarranty card YesCables included USB5M card ejector pin YesSIM card capability Dual SIMMobile network generation 4GSM card type NanoSIM3G standards UMTS3G standards LTE-TDD & LTE-FDDWi-Fi YesWi-Fi standards 802.11a, 802.11b, 802.11g, Wi-Fi 4 (802.11n), Wi-Fi 5 (802.11ac)Bluetooth YesBluetooth version 5.0Wi-Fi Direct YesNear Field Communication (NFC) YesVoice over LTE (VoLTE) supported Yes3G bands supported 850,900,2100 MHz4G bands supported 700,850,900,1800,2100,2300,2500,2600 MHzTethering (modem-mode) YesUSB subscription type No subscriptionUSB port YesUSB connector type Micro-USBHeadphone connectivity 3.5 mmANT+ enabled NoUSB version 2.0Head SAR (EU) 0.79 W/kgBody SAR (EU) 0.84 W/kgExtremities SAR (EU) 2.18 W/kgSpeakers MonoAudio system Dolby Atmos show moreCan't find the answer to your question in the manual? You may find the answer to your question in the FAQs about the Samsung Galaxy A03 below.To enable Dark Mode on your Samsung Galaxy A03, go to Settings, then Display, and select Dark Mode. You can choose to enable it permanently or set it to activate based on the time of day or battery level.To set up the fingerprint sensor on your Samsung Galaxy A03, go to Settings, then Biometrics and Security, and select Fingerprint Scanner. Follow the on-screen instructions to register your fingerprint.To take a screenshot on your Samsung Galaxy A03, press and hold the Power button and the Volume Down button simultaneously for a few seconds. The screenshot will be captured and saved in your Gallery or Screenshots folder.To transfer files from your computer to your Samsung Galaxy A03, connect your phone to the computer using a USB cable. On your phone, swipe down the notification panel, tap on "USB for charging," and select "File transfer" or "Transfer files." Your phone will be recognized as a removable storage device on your computer, allowing you to copy and paste files into the appropriate folder.To extend the battery life of your Samsung Galaxy A03, you can try optimizing your device's settings. Lowering screen brightness, disabling unnecessary background processes, and closing unused apps can help conserve battery power. Additionally, enabling power-saving modes, such as the "Medium power saving" or "Maximum power saving" modes, can further extend the battery life.Yes, the Samsung Galaxy A03 has a touchscreen. This allows users to easily interact with the phone through taps, swipes, and gestures.The display resolution of the Samsung Galaxy A03 is 720 x 1600 pixels. While this may not be the highest resolution available, it still provides clear and crisp visuals for everyday use.Yes, the Samsung Galaxy A03 is made of plastic. This material choice helps to keep the device lightweight and affordable, though it may not offer the same premium feel as devices made of metal or glass.Yes, the Samsung Galaxy A03 features face recognition. This feature allows users to quickly and securely unlock their phone using facial recognition technology.The maximum refresh rate of the Samsung Galaxy A03 is 60 Hz. While this may not be as high as some flagship devices with higher refresh rates, it still provides a smooth and responsive user experience.The Samsung Galaxy A03 has a weight of 199 g.The Samsung Galaxy A03 has a height of 166.6 mm.The Samsung Galaxy A03 has a width of 75.9 mm.The Samsung Galaxy A03 has a depth of 9.2 mm.Most Samsung model phones can be reset by using a key combination of volume + button, power on/off button and home button at startup.The screen size of the Samsung Galaxy A03 is 6.5 ".The size of your smartphone is usually expressed in inches, 1 inch is 2.54 centimetres. The size is the diagonal size of your smartphone, so you measure the screen from bottom left to top right.The screen resolution of the Samsung Galaxy A03 is 720 x 1600 pixels. It is possible to use a SIM card adapter. Insert the too small SIM card into the adapter and then place the adapter in the phone.The Samsung Galaxy A03 uses Android as the operating system.It takes 4 h to charge the battery of the Samsung Galaxy A03.The Samsung Galaxy A03 has 64 GB storage capacity.IMEI stands for 'International Mobile Equipment Identity'. This is a unique fifteen-digit number that distinguishes your Samsung phone from other phones.Make sure the batteries of your smartphone do not get too hot, in that case there is a very small chance that the battery will explode.Yes, the manual of the Samsung Galaxy A03 is available in English. Is your question not listed? Ask your question herePage 13View the manual for the Samsung Galaxy A03 here, for free. This manual comes under the category smartphones and has been rated by 28 people with an average of a 8.7. This manual is available in the following languages: English. Do you have a question about the Samsung Galaxy A03 or do you need help?Ask your question hereBelow you will find the product specifications and the manual specifications of the Samsung Galaxy A03.The Samsung Galaxy A03 is a smartphone featuring a 6.5-inch LCD display with a resolution of 720 x 1600 pixels. The display is equipped with touchscreen functionality, allowing for