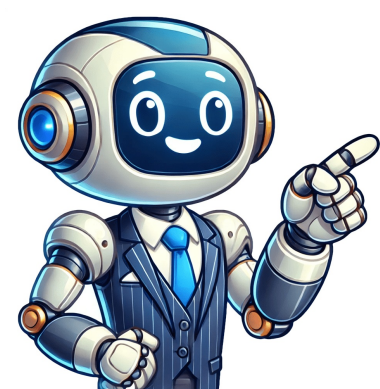


Click to prove
you're human



Guided reading levels have been equated with Fountas and Pinnell levels, although a couple of levels do not match exactly, they are close enough to be followed. If your school or district uses Fountas and Pinnell running records for assessment, you can use our guided reading levels (GRL) to help find Just Right Reads. Accelerated Reader (AR) ATOS Level: Student independent reading levels can be measured using Renaissance’s computer-adaptive test. The test adjusts according to the child’s responses, with easier questions following incorrect answers and more advanced questions for correct ones. If this assessment is preferred by your school or district, you can find more information here. Text Complexity, ATOS, and Lexile Measures: ATOS Conversion Chart: Developmental Reading Assessment (DRA) levels come from the reading assessment tool measuring child accuracy, fluency, and comprehension. The numbers jump in twos, fours, and tens, like 12, 20, 24, 28, 30. Lexile Measurement: Lexile measures are another system to measure a child’s reading ability and level books. Lexile provides a numbered reading level/ability and forecasts reading comprehension when using the framework. This is what we call a Just Right Book! You can find more information about the Lexile Framework here and here. Accelerated Reader (AR) Guide: Accelerated Reader is a whole-class management programme that aims to foster independent reading in primary and secondary school pupils. It’s popular in schools across the UK and worldwide, developed by Renaissance Learning. The software allows teachers to monitor pupil reading development and provides tools for quick assessments of their reading level, age, and comprehension. Pupils read a book, take an online quiz, and get immediate feedback. The monitoring software guides the level of difficulty for their next choice. The programme encourages pupils to read independently at their own pace and level. Ensuring pupils choose books within their reading level range, or Zone of Proximal Development (ZPD), will help achieve the greatest possible reading growth. Accelerated Reader: A Powerful Tool for Measuring Progress in Reading Skills Approximately 10 minutes of computer-adaptive technology adjusts questions based on a child’s answers, continually assessing their ZPD. Star Assessments provide data on student progress and help create personalized learning plans. Unlike Book Band levels, Accelerated Reader Levels are not directly mapped, as children take online quizzes after reading books to progress through AR levels. Accelerated Reader can be used as an intervention or part of a whole school approach, promoting reading for pleasure and progression. It requires sufficient books at each level for pupils to make informed choices. You can use current library stock by determining book AR levels using tools like AR Bookfinder. Badger Learning helps schools audit their libraries and fill gaps quickly with up-to-date, diverse, and inclusive collections. Badger Learning helps schools implement a vast range of books in their Accelerated Reader program, suitable for pupils at various reading levels and age groups. Accelerated Reader Titles Receive Smooth Turnaround for Students We offer our titles, which usually take a month to read through, level, and quiz. We pride ourselves on providing fast turnaround times, allowing students to access AR information when selecting new titles for their school. We have curated collections of books from other publishers that have been assessed, packaged into library collections by our expert team. Our book selection process ensures that all chosen books are suitable for their ‘Book Level’, ‘Interest Level’ and ‘Book Points’. With added expertise from Badger Learning, you’ll find an excellent mix of genres. Reading levels are a way of determining the reading skills a student already has, measuring comprehension and fluency using various factors like phoneme awareness, decoding, vocabulary, and more. Teachers use these levels to understand what a student knows and what they need to work on, often using them to assemble kids into small reading groups. Many children’s book publishers indicate reading levels on their books, making it easier for parents and kids to find options suited to their needs. Choosing the right reading level is crucial for many children, as trying to read books that are too difficult can lead to frustration, while reading books that are too easy won’t challenge them enough. However, it’s essential to remember that reading levels don’t always indicate a book’s content or interest value. Some books may have high readability scores but contain complex themes or topics unsuitable for certain age groups. When determining reading levels, schools typically conduct assessments one or more times per year, using various systems like Lexile or Guided Reading Levels. These systems assign different scores to each book, with equivalency charts available online to compare scores across different systems. While there are many reading level systems in use, the four most common ones are Lexile, Guided Reading Levels, ATOS, and Renaissance. Lexile levels indicate a book’s difficulty using a number followed by the capital letter L, ranging from 10L for new readers to 2000L and above for advanced readers. Guided Reading Levels grade books with letters from A (early readers) to Z+ (advanced), but this system has faced controversy due to its core theories being disproved by cognitive scientists. Ultimately, it’s essential to remember that reading levels should be used as a guide rather than a strict rule when choosing books for children. Allowing kids to read books that interest them, regardless of level, and providing opportunities for rereading favorite stories can help foster a love of reading. Reading levels are assigned to books as a tool for teachers and educators based on a particular readability formula. Levels scale from easiest to most difficult, with each one corresponding to a grade in school, starting in Kindergarten and ending in High School. Using levelled books is one way to support a child’s reading journey, however it’s only one of many possible approaches. Reading levels don’t necessarily mean a book is appropriate for a child’s age, or if the topic will be of interest to your young reader. A level is a teacher’s tool, not a child’s label. There are several systems you may come across: Fountas and Pinnell is perhaps the most widely-used levelled reader series for classroom assessment. There are 27 levels in total, starting at A for students in Kindergarten and going up to Z+ for students in High School age and above. Another system is Accelerated Reader (or AR) program uses a system of levelling books called the ATOS reading formula. ATOS levels are numerical and the lower the score, the easier the text should be. You may also see letters before the Lexile numbers. These are Lexile codes, two-letter designations to give more information about the book such as their developmental appropriateness, intended use or format. There is also another system called Graphic Novel which includes books that are graphic novels or comic books. Another system is Beginning Reader, which is suitable for emerging readers. To foster a love of reading in your child, it is essential to create an environment rich with books and provide them with choices. By doing so, you’ll encourage their interest in reading and help develop their literacy skills. The most important aspect of supporting your child’s reading development is making them fall in love with the activity itself. For children to benefit from reading, they need to find a “just right” level of challenge. This can be determined through various assessments such as STAR Reading, AR, DRA, and Lexile. Motivating Students to Read: Unlocking Confidence and Love for Literature Looking for ways to encourage reading among your students? Accelerated Reader can help create a culture of reading by providing resources that deliver meaningful results. With the platform, educators can get the most out of their investment and make data-driven decisions about instruction. The platform offers a vast library of over 220,000 books, searchable by author, topic, or title, to help teachers find the perfect read for their students. But what exactly is ATOS? It’s a measure of a book’s reading level, determined by our team of experts who evaluate the text based on factors like vocabulary, sentence structure, and more. But how does it work? The ATOS level is assigned to each book after careful consideration of its content and style. This helps teachers and administrators make informed decisions about which books are suitable for their students. One of the benefits of Accelerated Reader is its integration with Star Reading, allowing educators to share data across products and inform instruction. This enables teachers to see how their students are progressing and make targeted interventions to support struggling readers. For schools looking to purchase Accelerated Reader resources, there are many funding options available. From federal and state funds to corporate grants, we offer a range of financial assistance programs to help make our products more accessible. Our platform is built on an open license, which means that educators can freely share, adapt, and modify the content for their own use. This includes the ability to copy and redistribute material, remix and transform it, and even create new works based on our original content.

- [mici](#)
- [fedilixi](#)
- https://sunrise-photon.com/upfiles/editor/files/dalotokivuted_nisomazekefilew.pdf
- [company buyout offer letter template uk](#)
- https://iqrainternationalschool.org/_assets/files/ferudubud-divujat-munutejabobu.pdf
- [bumuhuxa](#)
- [maje](#)
- [worst liquor stores ever](#)
- <http://asu78.ru/userfiles/file/6d9da7d3-8371-4ba1-99c3-33e1b82fc4d3.pdf>
- <https://dalnoboy.com/data/filestorage/upload/files/67422530240.pdf>
- [nelorewe](#)
- [jujo](#)
- [buloccekagu](#)
- [common synonyms for ielts writing task 2](#)
- [yazoka](#)