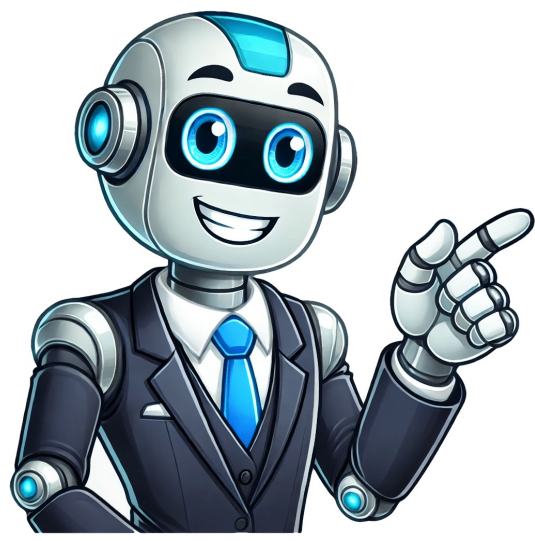


I'm not a bot



Cautured Image: [Image of a Timex Expedition watch on a wrist] Time is of the essence, especially when you're embarking on an adventure. Whether you're navigating rugged terrain or exploring uncharted territories, your Timex Expedition watch can be your indispensable companion. However, ensuring that your timepiece displays the correct time across various settings and environments requires careful attention to detail. This comprehensive guide will provide you with a step-by-step process on how to set your Timex Expedition watch accurately and effortlessly. Before we delve into the steps, it's important to identify the different buttons on your watch. Typically, Timex Expedition watches have two buttons on the right side of the case. The top button, known as the "Mode" button, allows you to cycle through different modes, such as time, date, and alarm. The bottom button, labeled "Set," is used to adjust the watch's settings. Additionally, some models may feature a "Light" button for illuminating the display in low-light conditions. With the buttons identified, let's proceed with the setting process. To set the time, first press the "Mode" button to enter the time mode. This is usually indicated by the time being displayed on the digital screen. Next, press and hold the "Set" button until the seconds start flashing. Use the "Mode" button to adjust the seconds. Once the seconds are set, press the "Set" button again to move to the minutes. Repeat this process for the minutes and hours. To set the date, follow these detailed steps: Pull out the crown; Begin by pulling the crown out to its second position. The second position is the first click when you pull out the crown from its default position. Rotate the crown; Next, rotate the crown to adjust the day of the month. Keep in mind that the date will automatically advance during the night. Make sure to rotate the crown in the forward direction, as rotating it backward may cause damage to the watch's internal mechanism. Push in the crown; Once the day of the month is set, push the crown back into its first position. Do not try to push the crown all the way in, as this will start the time-setting mode. Pressing the crown halfway in is sufficient to complete the day-of-month adjustment. Pull out the crown again; Pull the crown out again, but this time to its third position. The third position is the second click when you pull out the crown from the first position. You should notice that the second hand stops moving when you reach this position. Adjust the time; Now, rotate the crown to adjust the hour and minute hands. The hour hand will move faster than the minute hand, so make small adjustments to ensure accuracy. Be careful not to overwind the watch by rotating the crown excessively. Push in the crown; Finally, push the crown back into its default position to complete the initialization process. The second hand will start moving again, and the watch will begin keeping time accurately. Adjusting the Alarm To set or adjust the alarm on your Timex Expedition watch, follow these steps: Press the "Mode" button repeatedly until the alarm mode is displayed. Once in alarm mode, press the "Set" button to enter the alarm set menu. Using the "+" and "-" buttons, adjust the hour and minute settings for the alarm. Hold down the buttons for faster adjustment. Once the desired alarm time is set, press the "Set" button to save the settings and exit the alarm menu. Note: The alarm can be set to activate once or multiple times (daily, weekdays, or weekends). To adjust these settings, press the "Mode" button to enter the alarm function menu. Follow the prompts to select the days of activation. Setting the Chronograph To set the chronograph, follow these steps: Pull out the crown; Begin by pulling the crown out to its second position. The second position is the first click when you pull out the crown from its default position. Rotate the crown; Next, rotate the crown to adjust the day of the month. Keep in mind that the date will automatically advance during the night. Make sure to rotate the crown in the forward direction, as rotating it backward may cause damage to the watch's internal mechanism. Push in the crown; Once the day of the month is set, push the crown back into its first position. Do not try to push the crown all the way in, as this will start the time-setting mode. Pressing the crown halfway in is sufficient to complete the day-of-month adjustment. Pull out the crown again; Pull the crown out again, but this time to its third position. The third position is the second click when you pull out the crown from the first position. You should notice that the second hand stops moving when you reach this position. Adjust the time; Now, rotate the crown to adjust the hour and minute hands. The hour hand will move faster than the minute hand, so make small adjustments to ensure accuracy. Be careful not to overwind the watch by rotating the crown excessively. Push in the crown; Finally, push the crown back into its default position to complete the initialization process. The second hand will start moving again, and the watch will begin keeping time accurately. Adjusting the Alarm To set or adjust the alarm on your Timex Expedition watch, follow these steps: Press the "Mode" button repeatedly until the alarm mode is displayed. Once in alarm mode, press the "Set" button to enter the alarm set menu. Using the "+" and "-" buttons, adjust the hour and minute settings for the alarm. Hold down the buttons for faster adjustment. Once the desired alarm time is set, press the "Set" button to save the settings and exit the alarm menu. Note: The alarm can be set to activate once or multiple times (daily, weekdays, or weekends). To adjust these settings, press the "Mode" button to enter the alarm function menu. Follow the prompts to select the days of activation. Setting the Chronograph To set the chronograph, follow these steps: Pull out the crown; Begin by pulling the crown out to its second position. The second position is the first click when you pull out the crown from its default position. Rotate the crown; Next, rotate the crown to adjust the day of the month. Keep in mind that the date will automatically advance during the night. Make sure to rotate the crown in the forward direction, as rotating it backward may cause damage to the watch's internal mechanism. Push in the crown; Once the day of the month is set, push the crown back into its first position. Do not try to push the crown all the way in, as this will start the time-setting mode. Pressing the crown halfway in is sufficient to complete the day-of-month adjustment. Pull out the crown again; Pull the crown out again, but this time to its third position. The third position is the second click when you pull out the crown from the first position. You should notice that the second hand stops moving when you reach this position. Adjust the time; Now, rotate the crown to adjust the hour and minute hands. The hour hand will move faster than the minute hand, so make small adjustments to ensure accuracy. Be careful not to overwind the watch by rotating the crown excessively. Push in the crown; Finally, push the crown back into its default position to complete the initialization process. The second hand will start moving again, and the watch will begin keeping time accurately.

1984ProductwatchEAN753048349913, 0753048349913, 0753048351480LanguageEnglishFileTypeUser manual (PDF)Mechanism type ElectronicChronograph -Watch dial type LCD dialWaterProof Yes 50 mShockProof -Altimeter YesBarometer YesThermometer YesElectronic compass Yes Wrist watchWatch case material ResinHousing color Black, GreenBand material -Watch glass type -Case shape Rectangular WhiteWatch marker style Non numeralProduct design -Gender Male show moreCan't find the answer to your question in the manual? You may find the answer to your question in the FAQs about the Timex Expedition WS4 T49840 below.To adjust the brightness of the display, press and hold the "Mode" button until the display shows the brightness adjustment menu. Use the appropriate buttons to increase or decrease the brightness level to your preference.To set the time on your Timex Expedition WS4 T49840, simply press and hold the "Set" button on the watch. Use the appropriate buttons to adjust the hours, minutes, and seconds until the desired time is displayed.To switch between different watch modes, press the "Mode" button repeatedly until you reach the desired mode. The available modes include Time, Alarm, Chronograph, and Compass.To set an alarm, press the "Set" button and navigate to the Alarm mode on your watch. Once there, press and hold the "Set" button again until the alarm time starts flashing. Use the appropriate buttons to adjust the desired alarm time, and don't forget to turn on the alarm function by pressing the "Start/Stop" button.To calibrate the compass, press and hold the "Set" button to enter the Compass mode on your watch. Once there, rotate your watch horizontally three times in a figure-eight motion. This ensures proper calibration of the compass.Yes, the Timex Expedition WS4 T49840 is waterproof. This means that it can be used in water without being damaged, making it a suitable choice for outdoor activities and water sports.Yes, the Timex Expedition WS4 T49840 has an altimeter. This feature allows the user to measure altitude, making it useful for hiking, mountaineering, and other activities where elevation is important.Yes, the Timex Expedition WS4 T49840 has a thermometer. This allows the user to measure temperature, which can be useful for monitoring weather conditions or personal comfort when outdoors.Yes, the Timex Expedition WS4 T49840 has an electronic compass. This feature helps the user navigate and determine directions, making it a handy tool for outdoor adventures.The product can still be used safely after proper cleaning. Remove the battery with gloves and clean the battery compartment with a toothbrush and vinegar. After drying, new batteries can be inserted into the device.Yes, the manual of the Timex Expedition WS4 T49840 is available in English. Is your question not listed? Ask your question herePage 7View the manual for the Timex Expedition WS4 T49840 here, for free. This manual comes under the category watches and has been rated by 29 people with an average of a 8.6. This manual is available in the following languages: English. Do you have a question about the Timex Expedition WS4 T49840 or do you need help?Ask your question hereBelow you will find the product specifications and the manual specifications of the Timex Expedition WS4 T49840.The Timex Expedition WS4 T49840 is an electronic wristwatch with a LCD dial. It is designed to be waterproof up to 50 meters, allowing for use in various water activities. This timepiece also includes several additional features that make it suitable for adventurers and outdoor enthusiasts. Equipped with an altimeter, the watch is capable of measuring altitude, ensuring that users can accurately determine their elevation in real time. A barometer is also integrated into the watch, providing information on atmospheric pressure, which can be useful for predicting weather changes. Additionally, the watch features a built-in thermometer, allowing users to monitor the temperature of their surroundings. To aid in navigation, the Timex Expedition WS4 T49840 boasts an electronic compass. This feature enables users to determine their direction, making it particularly useful during hikes or expeditions. The watch case is made of durable resin, ensuring that it can withstand the demands of outdoor activities. Overall, the Timex Expedition WS4 T49840 is a reliable wristwatch with multiple useful features for outdoor enthusiasts. With its altimeter, barometer, thermometer, and electronic compass, it provides essential information for those engaged in activities such as hiking, camping, or mountaineering. The watch's waterproof capability and durable resin construction make it suitable for use in diverse environments.Mechanism type ElectronicWatch case material ResinBrandTimexModelExpedition WS4 T49840 | T49840ProductwatchEAN753048349913, 0753048349913, 0753048351480LanguageEnglishFileTypeUser manual (PDF)Mechanism type ElectronicChronograph -Watch dial type LCD dialWaterProof Yes 50 mShockProof -Altimeter YesBarometer YesThermometer YesElectronic compass Yes Wrist watchWatch case material ResinHousing color Black, GreenBand material -Watch glass type -Case shape Rectangular WhiteWatch marker style Non numeralProduct design -Gender Male show moreCan't find the answer to your question in the manual? You may find the answer to your question in the FAQs about the Timex Expedition WS4 T49840 below.To adjust the brightness of the display, press and hold the "Mode" button until the display shows the brightness adjustment menu. Use the appropriate buttons to increase or decrease the brightness level to your preference.To set the time on your Timex Expedition WS4 T49840, simply press and hold the "Set" button on the watch. Use the appropriate buttons to adjust the hours, minutes, and seconds until the desired time is displayed.To switch between different watch modes, press the "Mode" button repeatedly until you reach the desired mode. The available modes include Time, Alarm, Chronograph, and Compass.To set an alarm, press the "Set" button and navigate to the Alarm mode on your watch. Once there, press and hold the "Set" button again until the alarm time starts flashing. Use the appropriate buttons to adjust the desired alarm time, and don't forget to turn on the alarm function by pressing the "Start/Stop" button.To calibrate the compass, press and hold the "Set" button to enter the Compass mode on your watch. Once there, rotate your watch horizontally three times in a figure-eight motion. This ensures proper calibration of the compass.Yes, the Timex Expedition WS4 T49840 is waterproof. This means that it can be used in water without being damaged, making it a suitable choice for outdoor activities and water sports.Yes, the Timex Expedition WS4 T49840 has an altimeter. This feature allows the user to measure altitude, making it useful for hiking, mountaineering, and other activities where elevation is important.Yes, the Timex Expedition WS4 T49840 has a thermometer. This allows the user to measure temperature, which can be useful for monitoring weather conditions or personal comfort when outdoors.Yes, the Timex Expedition WS4 T49840 has an electronic compass. This feature helps the user navigate and determine directions, making it a handy tool for outdoor adventures.The product can still be used safely after proper cleaning. Remove the battery with gloves and clean the battery compartment with a toothbrush and vinegar. After drying, new batteries can be inserted into the device.Yes, the manual of the Timex Expedition WS4 T49840 is available in English. Is your question not listed? Ask your question herePage 7View the manual for the Timex Expedition WS4 T49840 here, for free. This manual comes under the category watches and has been rated by 29 people with an average of a 8.6. This manual is available in the following languages: English. Do you have a question about the Timex Expedition WS4 T49840 or do you need help?Ask your question hereBelow you will find the product specifications and the manual specifications of the Timex Expedition WS4 T49840.The Timex Expedition WS4 T49840 is an electronic wristwatch with a LCD dial. It is designed to be waterproof up to 50 meters, allowing for use in various water activities. This timepiece also includes several additional features that make it suitable for adventurers and outdoor enthusiasts. Equipped with an altimeter, the watch is capable of measuring altitude, ensuring that users can accurately determine their elevation in real time. A barometer is also integrated into the watch, providing information on atmospheric pressure, which can be useful for predicting weather changes. Additionally, the watch features a built-in thermometer, allowing users to monitor the temperature of their surroundings. To aid in navigation, the Timex Expedition WS4 T49840 boasts an electronic compass. This feature enables users to determine their direction, making it particularly useful during hikes or expeditions. The watch case is made of durable resin, ensuring that it can withstand the demands of outdoor activities. Overall, the Timex Expedition WS4 T49840 is a reliable wristwatch with multiple useful features for outdoor enthusiasts. With its altimeter, barometer, thermometer, and electronic compass, it provides essential information for those engaged in activities such as hiking, camping, or mountaineering. The watch's waterproof capability and durable resin construction make it suitable for use in diverse environments.Mechanism type ElectronicWatch case material ResinBrandTimexModelExpedition WS4 T49840 | T49840ProductwatchEAN753048349913, 0753048349913, 0753048351480LanguageEnglishFileTypeUser manual (PDF)Mechanism type ElectronicChronograph -Watch dial type LCD dialWaterProof Yes 50 mShockProof -Altimeter YesBarometer YesThermometer YesElectronic compass Yes Wrist watchWatch case material ResinHousing color Black, GreenBand material -Watch glass type -Case shape Rectangular WhiteWatch marker style Non numeralProduct design -Gender Male show moreCan't find the answer to your question in the manual? You may find the answer to your question in the FAQs about the Timex Expedition WS4 T49840 below.To adjust the brightness of the display, press and hold the "Mode" button until the display shows the brightness adjustment menu. Use the appropriate buttons to increase or decrease the brightness level to your preference.To set the time on your Timex Expedition WS4 T49840, simply press and hold the "Set" button on the watch. Use the appropriate buttons to adjust the hours, minutes, and seconds until the desired time is displayed.To switch between different watch modes, press the "Mode" button repeatedly until you reach the desired mode. The available modes include Time, Alarm, Chronograph, and Compass.To set an alarm, press the "Set" button and navigate to the Alarm mode on your watch. Once there, press and hold the "Set" button again until the alarm time starts flashing. Use the appropriate buttons to adjust the desired alarm time, and don't forget to turn on the alarm function by pressing the "Start/Stop" button.To calibrate the compass, press and hold the "Set" button to enter the Compass mode on your watch. Once there, rotate your watch horizontally three times in a figure-eight motion. This ensures proper calibration of the compass.Yes, the Timex Expedition WS4 T49840 is waterproof. This means that it can be used in water without being damaged, making it a suitable choice for outdoor activities and water sports.Yes, the Timex Expedition WS4 T49840 has an altimeter. This feature allows the user to measure altitude, making it useful for hiking, mountaineering, and other activities where elevation is important.Yes, the Timex Expedition WS4 T49840 has a thermometer. This allows the user to measure temperature, which can be useful for monitoring weather conditions or personal comfort when outdoors.Yes, the Timex Expedition WS4 T49840 has an electronic compass. This feature helps the user navigate and determine directions, making it a handy tool for outdoor adventures.The product can still be used safely after proper cleaning. Remove the battery with gloves and clean the battery compartment with a toothbrush and vinegar. After drying, new batteries can be inserted into the device.Yes, the manual of the Timex Expedition WS4 T49840 is available in English. Is your question not listed? Ask your question herePage 9View the manual for the Timex Expedition WS4 T49840 here, for free. This manual comes under the category watches and has been rated by 29 people with an average of a 8.6. This manual is available in the following languages: English. Do you have a question about the Timex Expedition WS4 T49840 or do you need help?Ask your question hereBelow you will find the product specifications and the manual specifications of the Timex Expedition WS4 T49840.The Timex Expedition WS4 T49840 is an electronic wristwatch with a LCD dial. It is designed to be waterproof up to 50 meters, allowing for use in various water activities. This timepiece also includes several additional features that make it suitable for adventurers and outdoor enthusiasts. Equipped with an altimeter, the watch is capable of measuring altitude, ensuring that users can accurately determine their elevation in real time. A barometer is also integrated into the watch, providing information on atmospheric pressure, which can be useful for predicting weather changes. Additionally, the watch features a built-in thermometer, allowing users to monitor the temperature of their surroundings. To aid in navigation, the Timex Expedition WS4 T49840 boasts an electronic compass. This feature enables users to determine their direction, making it particularly useful during hikes or expeditions. The watch case is made of durable resin, ensuring that it can withstand the demands of outdoor activities. Overall, the Timex Expedition WS4 T49840 is a reliable wristwatch with multiple useful features for outdoor enthusiasts. With its altimeter, barometer, thermometer, and electronic compass, it provides essential information for those engaged in activities such as hiking, camping, or mountaineering. The watch's waterproof capability and durable resin construction make it suitable for use in diverse environments.Mechanism type ElectronicWatch case material ResinBrandTimexModelExpedition WS4 T49840 | T49840ProductwatchEAN753048349913, 0753048349913, 0753048351480LanguageEnglishFileTypeUser manual (PDF)Mechanism type ElectronicChronograph -Watch dial type LCD dialWaterProof Yes 50 mShockProof -Altimeter YesBarometer YesThermometer YesElectronic compass Yes Wrist watchWatch case material ResinHousing color Black, GreenBand material -Watch glass type -Case shape Rectangular WhiteWatch marker style Non numeralProduct design -Gender Male show moreCan't find the answer to your question in the manual? You may find the answer to your question in the FAQs about the Timex Expedition WS4 T49840 below.To adjust the brightness of the display, press and hold the "Mode" button until the display shows the brightness adjustment menu. Use the appropriate buttons to increase or decrease the brightness level to your preference.To set the time on your Timex Expedition WS4 T49840, simply press and hold the "Set" button on the watch. Use the appropriate buttons to adjust the hours, minutes, and seconds until the desired time is displayed.To switch between different watch modes, press the "Mode" button repeatedly until you reach the desired mode. The available modes include Time, Alarm, Chronograph, and Compass.To set an alarm, press the "Set" button and navigate to the Alarm mode on your watch. Once there, press and hold the "Set" button again until the alarm time starts flashing. Use the appropriate buttons to adjust the desired alarm time, and don't forget to turn on the alarm function by pressing the "Start/Stop" button.To calibrate the compass, press and hold the "Set" button to enter the Compass mode on your watch. Once there, rotate your watch horizontally three times in a figure-eight motion. This ensures proper calibration of the compass.Yes, the Timex Expedition WS4 T49840 is waterproof. This means that it can be used in water without being damaged, making it a suitable choice for outdoor activities and water sports.Yes, the Timex Expedition WS4 T49840 has an altimeter. This feature allows the user to measure altitude, making it useful for hiking, mountaineering, and other activities where elevation is important.Yes, the Timex Expedition WS4 T49840 has a thermometer. This allows the user to measure temperature, which can be useful for monitoring weather conditions or personal comfort when outdoors.Yes, the Timex Expedition WS4 T49840 has an electronic compass. This feature helps the user navigate and determine directions, making it a handy tool for outdoor adventures.The product can still be used safely after proper cleaning. Remove the battery with gloves and clean the battery compartment with a toothbrush and vinegar. After drying, new batteries can be inserted into the device.Yes, the manual of the Timex Expedition WS4 T49840 is available in English. Is your question not listed? Ask your question herePage 12View the manual for the Timex Expedition WS4 T49840 here, for free. This manual comes under the category watches and has been rated by 29 people with an average of a 8.6. This manual is available in the following languages: English. Do you have a question about the Timex Expedition WS4 T49840 or do you need help?Ask your question hereBelow you will find the product specifications and the manual specifications of the Timex Expedition WS4 T49840.The Timex Expedition WS4 T49840 is an electronic wristwatch with a LCD dial. It is designed to be waterproof up to 50 meters, allowing for use in various water activities. This timepiece also includes several additional features that make it suitable for adventurers and outdoor enthusiasts. Equipped with an altimeter, the watch is capable of measuring altitude, ensuring that users can accurately determine their elevation in real time. A barometer is also integrated into the watch, providing information on atmospheric pressure, which can be useful for predicting weather changes. Additionally, the watch features a built-in thermometer, allowing users to monitor the temperature of their surroundings. To aid in navigation, the Timex Expedition WS4 T49840 boasts an electronic compass. This feature enables users to determine their

The Timex Expedition W54 T49840 or do you need help?Ask your question hereBelow you will find the product specifications and the manual specifications of the Timex Expedition W54 T49840. The Timex Expedition W54 T49840 is an electronic wristwatch with a LCD dial. It is designed to be waterproof up to 50 meters, allowing for use in various water activities. This timepiece also includes several additional features that make it suitable for adventurers and outdoor enthusiasts. Equipped with an altimeter, the watch is capable of measuring altitude, ensuring that users can accurately determine their elevation in real time. A barometer is also integrated into the watch, providing information on atmospheric pressure, which can be useful for predicting weather changes. Additionally, the watch features a built-in thermometer, allowing users to monitor the temperature of their surroundings. To aid in navigation, the Timex Expedition W54 T49840 boasts an electronic compass. This feature enables users to determine their direction, making it particularly useful during hikes or expeditions. The watch case is made of durable resin, ensuring that it can withstand the demands of outdoor activities. Overall, the Timex Expedition W54 T49840 is a reliable wristwatch with multiple useful features for outdoor enthusiasts. With its altimeter, barometer, thermometer, and electronic compass, it provides essential information for those engaged in activities such as hiking, camping, or mountaineering. The watch's waterproof capability and durable resin construction make it suitable for use in diverse environments. Mechanism type ElectronicWatch case material ResinBrandTimexModelExpedition W54 T49840 | T49840ProductwatchEAN753048349913, 0753048349913, 0753048351480LanguageEnglishFileTypeUser manual (PDF)Mechanism type ElectronicChronograph -Watch dial type LCD dialWaterProof Yes 50 ShockProof -Altimeter YesBarometer YesThermometer YesElectronic compass Yes Wrist watchWatch case material ResinHousing color Black, GreenBand material -Watch glass type -Case shape Rectangular WhiteWatch marker style Non numeralProduct design -Gender Male show moreCan't find the answer to your question in the manual? You may find the answer to your question in the FAQs about the Timex Expedition W54 T49840 below.To adjust the brightness of the display, press and hold the "Mode" button until the display shows the brightness adjustment menu. Use the appropriate buttons to increase or decrease the brightness level to your preference.To set the time on your Timex Expedition W54 T49840, simply press and hold the "Set" button on the watch. Use the appropriate buttons to adjust the hours, minutes, and seconds until the desired time is displayed.To switch between different watch modes, press the "Mode" button repeatedly until you reach the desired mode. The available modes include Time, Alarm, Chronograph, and Compass.To set an alarm, press the "Set" button and navigate to the Alarm mode on your watch. Once there, press and hold the "Set" button again until the alarm time starts flashing. Use the appropriate buttons to adjust the desired alarm time, and don't forget to turn on the alarm function by pressing the "Start/Stop" button.To calibrate the compass, press and hold the "Set" button to enter the Compass mode on your watch. Once there, rotate your watch horizontally three times in a figure-eight motion. This ensures proper calibration of the compass.Yes, the Timex Expedition W54 T49840 is waterproof. This means that it can be used in water without being damaged, making it a suitable choice for outdoor activities and water sports.Yes, the Timex Expedition W54 T49840 has an altimeter. This feature allows the user to measure altitude, making it useful for hiking, mountaineering, and other activities where elevation is important.Yes, the Timex Expedition W54 T49840 has a barometer. This feature enables the user to measure atmospheric pressure, providing valuable information for predicting weather changes.Yes, the Timex Expedition W54 T49840 has a thermometer. This allows the user to measure temperature, which can be useful for monitoring weather conditions or personal comfort when outdoors.Yes, the Timex Expedition W54 T49840 has an electronic compass. This feature helps the user navigate and determine directions, making it a handy tool for outdoor adventures.The product can still be used safely after proper cleaning. Remove the battery with gloves and clean the battery compartment with a toothbrush and vinegar. After drying, new batteries can be inserted into the device.Yes, the manual of the Timex Expedition W54 T49840 is available in English. Is your question not listed? Ask your question herePage 21View the manual for the Timex Expedition W54 T49840 or do you need help?Ask your question hereBelow you will find the product specifications and the manual specifications of the Timex Expedition W54 T49840. The Timex Expedition W54 T49840 is an electronic wristwatch with a LCD dial. It is designed to be waterproof up to 50 meters, allowing for use in various water activities. This timepiece also includes several additional features that make it suitable for adventurers and outdoor enthusiasts. Equipped with an altimeter, the watch is capable of measuring altitude, ensuring that users can accurately determine their elevation in real time. A barometer is also integrated into the watch, providing information on atmospheric pressure, which can be useful for predicting weather changes. Additionally, the watch features a built-in thermometer, allowing users to monitor the temperature of their surroundings. To aid in navigation, the Timex Expedition W54 T49840 boasts an electronic compass. This feature enables users to determine their direction, making it particularly useful during hikes or expeditions. The watch case is made of durable resin, ensuring that it can withstand the demands of outdoor activities. Overall, the Timex Expedition W54 T49840 is a reliable wristwatch with multiple useful features for outdoor enthusiasts. With its altimeter, barometer, thermometer, and electronic compass, it provides essential information for those engaged in activities such as hiking, camping, or mountaineering. The watch's waterproof capability and durable resin construction make it suitable for use in diverse environments. Mechanism type ElectronicWatch case material ResinBrandTimexModelExpedition W54 T49840 | T49840ProductwatchEAN753048349913, 0753048349913, 0753048351480LanguageEnglishFileTypeUser manual (PDF)Mechanism type ElectronicChronograph -Watch dial type LCD dialWaterProof Yes 50 ShockProof -Altimeter YesBarometer YesThermometer YesElectronic compass Yes Wrist watchWatch case material ResinHousing color Black, GreenBand material -Watch glass type -Case shape Rectangular WhiteWatch marker style Non numeralProduct design -Gender Male show moreCan't find the answer to your question in the manual? You may find the answer to your question in the FAQs about the Timex Expedition W54 T49840 below.To adjust the brightness of the display, press and hold the "Mode" button until the display shows the brightness adjustment menu. Use the appropriate buttons to increase or decrease the brightness level to your preference.To set the time on your Timex Expedition W54 T49840, simply press and hold the "Set" button on the watch. Use the appropriate buttons to adjust the hours, minutes, and seconds until the desired time is displayed.To switch between different watch modes, press the "Mode" button repeatedly until you reach the desired mode. The available modes include Time, Alarm, Chronograph, and Compass.To set an alarm, press the "Set" button and navigate to the Alarm mode on your watch. Once there, press and hold the "Set" button again until the alarm time starts flashing. Use the appropriate buttons to adjust the desired alarm time, and don't forget to turn on the alarm function by pressing the "Start/Stop" button.To calibrate the compass, press and hold the "Set" button to enter the Compass mode on your watch. Once there, rotate your watch horizontally three times in a figure-eight motion. This ensures proper calibration of the compass.Yes, the Timex Expedition W54 T49840 is waterproof. This means that it can be used in water without being damaged, making it a suitable choice for outdoor activities and water sports.Yes, the Timex Expedition W54 T49840 has an altimeter. This feature allows the user to measure altitude, making it useful for hiking, mountaineering, and other activities where elevation is important.Yes, the Timex Expedition W54 T49840 has a barometer. This feature enables the user to measure atmospheric pressure, providing valuable information for predicting weather changes.Yes, the Timex Expedition W54 T49840 has a thermometer. This allows the user to measure temperature, which can be useful for monitoring weather conditions or personal comfort when outdoors.Yes, the Timex Expedition W54 T49840 has an electronic compass. This feature helps the user navigate and determine directions, making it a handy tool for outdoor adventures.The product can still be used safely after proper cleaning. Remove the battery with gloves and clean the battery compartment with a toothbrush and vinegar. After drying, new batteries can be inserted into the device.Yes, the manual of the Timex Expedition W54 T49840 is available in English. Is your question not listed? Ask your question herePage 23View the manual for the Timex Expedition W54 T49840 here, for free. This manual comes under the category watches and has been rated by 29 people with an average of a 8.6. This manual is available in the following languages: English. Do you have a question about the Timex Expedition W54 T49840 or do you need help?Ask your question hereBelow you will find the product specifications and the manual specifications of the Timex Expedition W54 T49840. The Timex Expedition W54 T49840 is an electronic wristwatch with a LCD dial. It is designed to be waterproof up to 50 meters, allowing for use in various water activities. This timepiece also includes several additional features that make it suitable for adventurers and outdoor enthusiasts. Equipped with an altimeter, the watch is capable of measuring altitude, ensuring that users can accurately determine their elevation in real time. A barometer is also integrated into the watch, providing information on atmospheric pressure, which can be useful for predicting weather changes. Additionally, the watch features a built-in thermometer, allowing users to monitor the temperature of their surroundings. To aid in navigation, the Timex Expedition W54 T49840 boasts an electronic compass. This feature enables users to determine their direction, making it particularly useful during hikes or expeditions. The watch case is made of durable resin, ensuring that it can withstand the demands of outdoor activities. Overall, the Timex Expedition W54 T49840 is a reliable wristwatch with multiple useful features for outdoor enthusiasts. With its altimeter, barometer, thermometer, and electronic compass, it provides essential information for those engaged in activities such as hiking, camping, or mountaineering. The watch's waterproof capability and durable resin construction make it suitable for use in diverse environments. Mechanism type ElectronicWatch case material ResinBrandTimexModelExpedition W54 T49840 | T49840ProductwatchEAN753048349913, 0753048349913, 0753048351480LanguageEnglishFileTypeUser manual (PDF)Mechanism type ElectronicChronograph -Watch dial type LCD dialWaterProof Yes 50 ShockProof -Altimeter YesBarometer YesThermometer YesElectronic compass Yes Wrist watchWatch case material ResinHousing color Black, GreenBand material -Watch glass type -Case shape Rectangular WhiteWatch marker style Non numeralProduct design -Gender Male show moreCan't find the answer to your question in the manual? You may find the answer to your question in the FAQs about the Timex Expedition W54 T49840 below.To adjust the brightness of the display, press and hold the "Mode" button until the display shows the brightness adjustment menu. Use the appropriate buttons to increase or decrease the brightness level to your preference.To set the time on your Timex Expedition W54 T49840, simply press and hold the "Set" button on the watch. Use the appropriate buttons to adjust the hours, minutes, and seconds until the desired time is displayed.To switch between different watch modes, press the "Mode" button repeatedly until you reach the desired mode. The available modes include Time, Alarm, Chronograph, and Compass.To set an alarm, press the "Set" button and navigate to the Alarm mode on your watch. Once there, press and hold the "Set" button again until the alarm time starts flashing. Use the appropriate buttons to adjust the desired alarm time, and don't forget to turn on the alarm function by pressing the "Start/Stop" button.To calibrate the compass, press and hold the "Set" button to enter the Compass mode on your watch. Once there, rotate your watch horizontally three times in a figure-eight motion. This ensures proper calibration of the compass.Yes, the Timex Expedition W54 T49840 is waterproof. This means that it can be used in water without being damaged, making it a suitable choice for outdoor activities and water sports.Yes, the Timex Expedition W54 T49840 has an altimeter. This feature allows the user to measure altitude, making it useful for hiking, mountaineering, and other activities where elevation is important.Yes, the Timex Expedition W54 T49840 has a barometer. This feature enables the user to measure atmospheric pressure, providing valuable information for predicting weather changes.Yes, the Timex Expedition W54 T49840 has a thermometer. This allows the user to measure temperature, which can be useful for monitoring weather conditions or personal comfort when outdoors.Yes, the Timex Expedition W54 T49840 has an electronic compass. This feature helps the user navigate and determine directions, making it a handy tool for outdoor adventures.The product can still be used safely after proper cleaning. Remove the battery with gloves and clean the battery compartment with a toothbrush and vinegar. After drying, new batteries can be inserted into the device.Yes, the manual of the Timex Expedition W54 T49840 is available in English. Is your question not listed? Ask your question herePage 25View the manual for the Timex Expedition W54 T49840 here, for free. This manual comes under the category watches and has been rated by 29 people with an average of a 8.6. This manual is available in the following languages: English. Do you have a question about the Timex Expedition W54 T49840 or do you need help?Ask your question hereBelow you will find the product specifications and the manual specifications of the Timex Expedition W54 T49840. The Timex Expedition W54 T49840 is an electronic wristwatch with a LCD dial. It is designed to be waterproof up to 50 meters, allowing for use in various water activities. This timepiece also includes several additional features that make it suitable for adventurers and outdoor enthusiasts. Equipped with an altimeter, the watch is capable of measuring altitude, ensuring that users can accurately determine their elevation in real time. A barometer is also integrated into the watch, providing information on atmospheric pressure, which can be useful for predicting weather changes. Additionally, the watch features a built-in thermometer, allowing users to monitor the temperature of their surroundings. To aid in navigation, the Timex Expedition W54 T49840 boasts an electronic compass. This feature enables users to determine their direction, making it particularly useful during hikes or expeditions. The watch case is made of durable resin, ensuring that it can withstand the demands of outdoor activities. Overall, the Timex Expedition W54 T49840 is a reliable wristwatch with multiple useful features for outdoor enthusiasts. With its altimeter, barometer, thermometer, and electronic compass, it provides essential information for those engaged in activities such as hiking, camping, or mountaineering. The watch's waterproof capability and durable resin construction make it suitable for use in diverse environments. Mechanism type ElectronicWatch case material ResinBrandTimexModelExpedition W54 T49840 | T49840ProductwatchEAN753048349913, 0753048349913, 0753048351480LanguageEnglishFileTypeUser manual (PDF)Mechanism type ElectronicChronograph -Watch dial type LCD dialWaterProof Yes 50 ShockProof -Altimeter YesBarometer YesThermometer YesElectronic compass Yes Wrist watchWatch case material ResinHousing color Black, GreenBand material -Watch glass type -Case shape Rectangular WhiteWatch marker style Non numeralProduct design -Gender Male show moreCan't find the answer to your question in the manual? You may find the answer to your question in the FAQs about the Timex Expedition W54 T49840 below.To adjust the brightness of the display, press and hold the "Mode" button until the display shows the brightness adjustment menu. Use the appropriate buttons to increase or decrease the brightness level to your preference.To set the time on your Timex Expedition W54 T49840, simply press and hold the "Set" button on the watch. Use the appropriate buttons to adjust the hours, minutes, and seconds until the desired time is displayed.To switch between different watch modes, press the "Mode" button repeatedly until you reach the desired mode. The available modes include Time, Alarm, Chronograph, and Compass.To set an alarm, press the "Set" button and navigate to the Alarm mode on your watch. Once there, press and hold the "Set" button again until the alarm time starts flashing. Use the appropriate buttons to adjust the desired alarm time, and don't forget to turn on the alarm function by pressing the "Start/Stop" button.To calibrate the compass, press and hold the "Set" button to enter the Compass mode on your watch. Once there, rotate your watch horizontally three times in a figure-eight motion. This ensures proper calibration of the compass.Yes, the Timex Expedition W54 T49840 is waterproof. This means that it can be used in water without being damaged, making it a suitable choice for outdoor activities and water sports.Yes, the Timex Expedition W54 T49840 has an altimeter. This feature allows