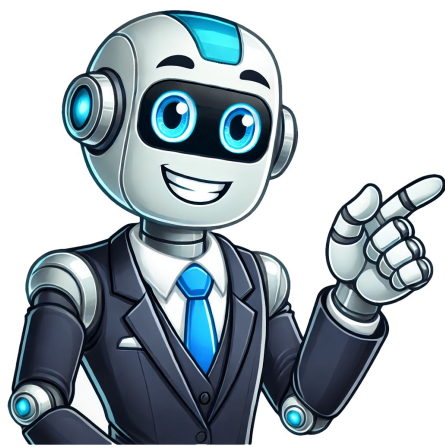


Continue



Click on an alphabet below to see the full list of models starting with that letter: New manuals WarrantyLIMITED LIFETIME FOR MECHANICAL AND 1 YEAR FOR ELECTRONICAL WARRANTYThe retailer of this product, hereby warrants, subject to the conditions set forth below, that it will either repair or replace, at its option, this product if it proves to be defective by reason of improper workmanship or materials within the original purchaser's lifetime. In order to obtain repairs or replacement under this limited warranty you must bring this product to the retailer's store in which you bought it.Original purchaser: This limited warranty is limited to the original purchaser at retail of this product from retailer.Except to the extent prohibited by applicable law, no other warranties, whether express or implied, including the warranties of merchantability and tness for a particular purpose, shall apply to this product. Under no circumstances shall retailer be liable for consequential or incidental damages in connection with this product. To the extent retailer is prohibited by applicable law from excluding implied warranties, the duration of such implied warranties which are not excludable shall be the original purchaser's lifetime. Some states do not allow the limitation on how long an implied warranty lasts, so the above limitation on the duration of implied warranties which are not excludable, if any, may not apply to you. Some states do not allow the exclusion or limitation of incidental or consequential damages, so the above limitation or exclusion of incidental or consequential damages may not apply to you. Retailer neither assumes nor authorizes any representative or other person to assume for it any obligation or liability other than such as is expressly set forth herein. This limited warranty gives you specic legal rights, and you may also have other rights which vary from state to state Questions, problems, missing parts? Before returning to the store, call Deant Customer Service 8 a.m. - 7 p.m., EST, Monday-Friday, 9 a.m. - 6 p.m., EST, Saturday1-866-308-3976HOMEDEPOT.COMINSTALLATION GUIDEFINGERPRINT KEYPAD DEADBOLT KPDKS02ADK02A Rev. 1.0THANK YOUWe appreciate the trust and confidence you have placed in Defiant through the purchase of this fingerprint keypad deadbolt. We strive to continually create quality products designed to enhance your home. Visit us online to see our full line of products available for your home improvement needs. Thank you for choosing Defiant!1 Preparing the door and checking dimensionsMeasure to conrm that the hole in the door is 2-1/8 in. (54 mm).Measure to conrm that the backset is either 2-3/8 in. or 2-3/4 in. (60 or 70 mm).Measure to conrm that the hole in the door edge is 1 in. (25 mm).Measure to conrm that the door is 1-3/8 in. to 2 in. (35 mm to 50 mm) thick. 2 Installing the latch and strikeHold the latch (C) in front of the door hole, with the latch face ush against the door edge. No adjustment is required if slotted hole is centered (backset 2-3/8 in.). Rotate and pull backwards the latch to extend, then rotate it back as shown if slotted hole is not centered (backset 2-3/4in.).2a. Installing latch and strike - door edge chiseledInstall the latch in door edge hole directly with latch screws (K) if your door edge is chiseled. 3 Installing exterior assembly Route the power cable (M) below the latch.Install exterior assembly (B) and send the power cable through the bottom horizontal slot in the mounting plate (D).Secure the mounting plate with the mounting screws (E).4 Installing interior assemblyRemove the battery cover (G).Connect the power cable (M) and ensure tight cable connection.Rotate the thumb turn in vertical position and install the interior assembly (F).Test the thumb turn for smooth rotation. If thumb turn doesn't rotate, repeat last step, making sure the thumb turn in vertical position.Secure the interior assembly with the supplied screws (H).5 Detecting left/right hand door installation Reset the lock to teach the lock the orientation of the door While the door is OPEN and UNLOCKED, load three AA batteries into the interior assembly Press and hold the Reset button on the interior assembly using the reset tool (O) included in package.Load the last battery and keep holding the reset button for at least 3 seconds, until you hear the sound of "beep". The latch bolt will extend to learn the orientation of the door.Safety InformationRead the precautions and instructions in this manual before installing and using this lock. Save this manual for future reference.Do not attempt to disassemble any internal components of the lockset. Doing so will void the limited warranty.Do not drop or hit the lockset. Too much shock may result in permanent damage.Do not use pins or sharp objects to press the keypad and ngerprint sensor.Always create a backup of information you wish to keep (Master Code, User Codes, etc.).Promptly change the master code before operating this lockset.Restrict access to your lock's interior assembly and routinely check your settings to ensure they have not been altered without your knowledge.Care and CleaningRemove locks, or do not install locks, prior to painting your door.Periodically clean with mild soap and a soft cloth only.Do not use any abrasives or chemical products containing alcohol, benzene, or acids, and avoid using sharp or abrasive objects to clean this lockset.Do not allow any water or liquids into the lockset during installation.This lockset is designed to provide the highest standard of product quality and performance. Care should be taken to ensure a long-lasting nish. When cleaning is required use a soft, damp cloth.Using lacquer thinner,caustic soaps,abrasive cleaners, or polishes could damage the coating and result in tarnishing.TOOLS REQUIREDPACKAGE CONTENTSChiseledNotChiseledInsert a at head screwdriver into latch slot and rotate to test if deadbolt works smoothly.Install strike (J) in the door frame with strike screws (L), and in order to maintain BHMA Grade 3, you must install the reinforcement plate (I).2b. Installing latch and strike - door edge not chiseledUse a at head screwdriver to remove rectangular face and rotate off part of the latch face, then install drive-in collar (N) if your door edge is not chiseled. Then install latch in door with wood block and hammer.1-3/8 in. to 2 in.35 mm to 50 mm2-3/8 in. or 2-3/4 in.60 or 70 mmBackset2-1/8 in.54 mm1 in.25 mmInstallationInstallation (continued) Installation (continued)Installation (continued)Latch slot(optional)latch slotIMPORTANT: Make sure hole in door frame is drilled a minimum of 1 in. (25.4 mm) deep.IMPORTANT: Before installation, make sure the latch is fully retracted (in the unlocked position).NOTE: Before beginning installation of product, make sure all parts are present. If any part is missing or damaged, do not attempt to assemble, install or operate the product. Call the Customer Service Team at 1-866-308-3976 or visit www.homedepot.com.IMPORTANT: Do not load batteries until lock is completely installed.IMPORTANT: Lock knob will only rotate to the lock position in either the clockwise or counterclockwise direction based on your door handing, not both.IMPORTANT: This step is required and crucial for the lock to operate properly.IMPORTANT: For best results, use new, non-rechargeable alkaline batteries only.UnlockedParallel to the door edge.UnlockedBMDEHorizontal Torque BladeFDMGHUnlockedReset toolOSee the User Guide for additional information.WARNING: Do not use electric drill or electric screwdriver to tighten screws.Pre-InstallationABCDEFGHIJKLMNPart DescriptionPart DescriptionA Backup Key HSCrewsB Exterior Assembly I Reinforcement plateC LatchJStriked Mounting Plate KLatch Screws (21 mm)E Mounting Screws L Strike Screws (38 mm)F Interior Assembly MPower CableG Battery Cover NDrive-in CollarO Reset Tool2-3/4 in.70 mm60 mmSlotted hole1 32IMPORTANT: Up arrow needs to face up on latch. Click on an alphabet below to see the full list of models starting with that letter: New manuals 544-068 00030878310727 24780 29068 31072 32648 544-068 TM-074 TM-087 01 • Programming Mode will automatically time out after 30 seconds of inactivity. • If you make a mistake during programming, press the SET button to leaveProgramming Mode and start over.G32-KPD4H12-C709-XQRev. 20/06-00Questions, problems, missing parts? Before returning to the store, call Deant Customer Service TOLL FREE HELP LINE 1-877-663-5625HOMEDEPOT.COM08:30 a.m.-05:30 p.m., EST, Monday - FridayUSER GUIDEPROGRAMMING OVERVIEW OF FUNCTIONS ORKEYPAD1. Unlock the lockset by entering a valid User Code.2. Program the lockset by entering a valid Master Code in Programming Mode.1. Lock or unlock the lockset by a valid key.MECHANICAL KEYWAY OVERRIDEENTER / LOCK BUTTON1. Red light: Represents an incorrect entry or the unit is in programming mode.2. Yellow light: Flashes when the batteries are low in power. 3. Green light: Represents a correct entry.4. Press to activate or lock the lockset.Change Master Code • A Master Code can be used to program or unlock the lock. • The preset Master Code is 123456. • Please change the Master Code before operating the lock.Press SET BUTTON to exit programming mode. Press SET BUTTON to exit programming mode. Press SET BUTTON to exit programming mode.Press 01Enter New Master Code (4-6 digits)then pressEnter current Master Code (4-6 digits) then press Press [SET] button onceEnter New User Code (4-6 digits)Add another code Enter unwanted User Code (4-6 digits)Delete another code 123404Delete all User / Single-entry Codes • Delete ALL User Codes at once. • Use the existing Master Code (4-6 digits) to unlock the unit after the deletion of User/Single-entry Codes.Press Press 04Enter current Master Code (4-6 digits) then press Press [SET] button once123402Add User Code(s) • The unit can store up to 10 customized User Codes (4-6 digits long).Press 02Enter current Master Code (4-6 digits) then press Press [SET] button once123403Delete Individual User or Single-entry Code(s) • Delete one or more codes at a time, including User Codes or Single-entry Codes. • Users/Single-entry codes cannot be retrieved after they are deleted.Press 03Enter current Master Code (4-6 digits) then press Press [SET] button once1234Table Of ContentsProgramming Guide01020304050607080910-Change Master Code(s).....-Add User Code(s).....-Delete Individual User or Single-entry Code(s).....-Delete all User / Single-entry Codes.....-Add Single-entry Code(s).....-Vacation Mode.....-Enable or Disable.....-Auto-lock Function.....-Restore To Factory Settings.....BATTERY COVER1. Protect the batteries from unexpected damage.[SET] BUTTON INTERIOR THUMBTURN1. Lock or unlock the lockset manually.SCAN FORPROGRAMMING Programming a Defiant Electronic Deadbolt involves changing the Master Code, adding/deleting User Codes, resetting factory settings, and more.If that sounds like what you're looking to do, then this article is your go-to resource. Let's start with changing the Master Code on a Defiant Electronic Lock.Keypad/Buttons Functions. Image adapted from Defiant Electronic Lock User Manual.But first, if you've just installed a new Defiant Keypad Lock or whenever you reset the lock, you need to perform the bolt direction determination. This teaches the lock the orientation of your door—whether it's a right-handed or left-handed door.Make sure you don't skip the bolt direction determination process because your lock may not lock/unlock electronically if you don't do this.To perform the Bolt Direction Determination, all you need to do is to enter the default Master Code—123456. Then wait 10 seconds—the latch bolt will extend and retract to learn the orientation of your door.Once the latch bolt extends and retracts, the bolt direction determination is process complete.Before we head over to the instructions, keep in mind that a new Defiant lock comes with a default 6 digits Master Code—123456. This code allows you to put the lock in programming mode and then make changes to the lock programming. However, you need to change the default Master Code to ensure security. Also, if you've acquired a previously owned Defiant lock or you think someone is spying on your existing code, you want to change it to ensure no one else can change the lock programming.With that being said, here's how to change the Master Code on a Defiant lock:Go to the interior assembly of the lock and remove the battery cover to find the SET button—a red circle button. The image above should also help you locate the SET button.Press and hold the SET button until the lock beeps. Then release it. Enter your current Master Code. Then press the Lock button (for a new Defiant lock, use your default MASTER CODE—123456).Press 1, 0, and then press the Lock button.Now enter your new Master Code (6 digits) and press the Lock button to complete the process.Note: The Master Code can also be used to unlock your door from the outside. A User Code (also known as an access code or passcode) is a unique code that you can enter on the lock keypad to unlock your door. So, after installing your Defiant lock and probably changing the Master Code, the next thing you want to do is add new User Codes.Here's how to do that:Press and hold the SET button until you hear a beep before releasing it.Enter your current Master Code and press the Lock button.Press 2, 0, and then press the Lock button.Now enter a new User Code (4-6 digits) and then press the Lock button.That's all about adding a new User Code. Repeat the process to add more User Codes—if you want to.Note: Defiant Electronic Deadbolt can only store up to 10 unique User Codes (4 to 6 digits). If you've programmed up to 10 codes, you'll have to delete an existing code to add a new one.You can delete a single User Code or delete all codes at once on a Defiant electronic lock. Let's start with deleting a single User Code:Press and hold the SET button until the lock beeps. Next, release the SET button.Enter your current Master Code and then press the Lock button.Press 3, 0, and then press the Lock button.Enter the User Code you want to delete and press the Lock button to complete the process.Now the existing User Code has been deleted. You should, however, try to use it to unlock the lock to confirm if it was successfully deleted.To delete all User Codes at once, here's how to go about it:Press and hold the SET button until you hear a beep and then release the SET button.Enter your current Master Code and press the Lock button.Press 4, 0, and then press the Lock button. Next, press the Lock button again to complete the process.This will delete all programmed User Codes. You can use your Master Code to unlock the lock if you haven't added new User Codes yet.As you probably know, the auto-lock function on electronic keypad locks automatically locks the lock if left unlocked for some time—depending on the configuration. However, the feature is usually disabled by default and you have to enable it if you want it active.So here's how to enable the auto-lock function on a Defiant Electronic Deadbolt:Press and hold the SET button until the lock beeps and then release the SET button.Enter your Master Code and press the Lock button.Press 8, 0, and then press the Lock button.Press 1 and then press the Lock button to complete the process.Now the auto-lock function is active, meaning the lock will automatically lock whenever it's left unlocked for 10 seconds.To disable auto-lock, repeat all steps above but press 0 and the Lock button in the last step (instead of 1 and the Lock button).Note: 10 seconds is the default time value for this lock, but you can extend it from 10 to 99 seconds.See how to set up the auto-lock with your preferred time value:Press and hold the SET button until the lock beeps and then release the SET button.Enter your Master Code and press the Lock button.Press 7, 0, and then press the Lock button.Enter your preferred time value (10 to 99 seconds) and then press the Lock button to complete the process.So the lock will now automatically lock based on the time value you set.Putting your lock on vacation mode will make all User Codes ineffective. That is, no User Code can unlock the lock except the Master Code. Here's how to enable vacation mode on a Defiant Lock:Press and hold the SET button until the lock beeps and then release the SET button.Input your current Master Code and press the Lock button.Press 5, 0, and then press the Lock button.Press 1 and then press the Lock button to turn on the vacation mode.To disable vacation mode, repeat step 1 to 3 above and then press 0 and the Lock button in the last step.Not comfortable with the beeper sound when operating your lock? You can easily turn it off via the keypad. Here's how to go about it:Press and hold the SET button until you hear a beep. Next, release the SET button.Enter your Master Code and press the Lock button.Press 6, 0, and then press the Lock button.Press 0 and then press the Lock button to turn the beeper sound off.To turn it on, repeat steps 1 to 3 and then press 1 and the Lock button in the last step.Note: Beeper will still sound during programming.Keep in mind that resetting your lock will erase all stored information, including your current Master Code and all user codes.You should only reset the lock if it's malfunctioning or if you lost your Master Code. As Mentioned earlier, this will remove all the existing codes and restore the factory default codes. So you can reprogram the lock using the default Master Code.That said, here's how to reset a Defiant Electronic Lock:Remove the battery cover and remove one battery.Press and hold the SET button. Next, replace the battery while still holding the SET button.Continue holding the SET button until you hear a long and short beep.Now release the SET button—after the long and short beep is heard.Go to the keypad (exterior assembly of the lock) and enter the default Master Code—123456. Then wait for about 10 seconds for the latch bolt to extend and retract.Once the latch bolt extends and retracts, the process is complete.So that's how to reset a Defiant electronic lock Master Code. Ensure you change the Master Code for security reasons.You may also read about how to program/reset Trilogy DL2800.Check that the batteries are still active and installed properly. If the batteries are low, replace them with four new alkaline batteries for the best performance.Also, ensure the cable is correctly connected to the port.If it still doesn't work, try to reset the lock. See how to reset a Defiant lock above.Assuming you're entering a valid Master Code during the process but still unable to change it, your best bet is to factory reset the lock and then reprogram all codes.The auto-lock function is disabled by default and you need to enable it before it works—see how to enable auto-lock above.But if enabled and still doesn't work, check if your batteries are still active and replace them if they're low.Your reset code is your current Master Code. See how to reset a Defiant lock above.To lock: Press the Lock button.To unlock: Enter a valid User Code or your current Master Code.So that's how to program a Defiant Electronic Deadbolt.Note: When adding a User Code or changing the Master Code, ensure you enter the code within 10 seconds, otherwise the unit will time and you may have to start all over again. Click on an alphabet below to see the full list of models starting with that letter: Click on an alphabet below to see the full list of models starting with that letter: H32-0C000XD19 XT-20180403 Click on an alphabet below to see the full list of models starting with that letter: 90101 99657 Click on an alphabet below to see the full list of models starting with that letter: 1005911745 H-86RF-RGB-3PK Defiant