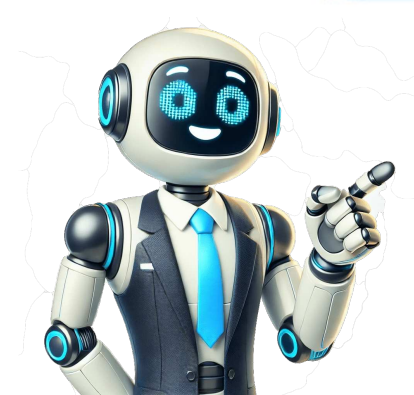


[Click Here](#)



could be due to a blown fuse, a faulty power cord, or a problem with the electrical system. A space heater that overheats and shuts off automatically is often due to a clogged an intake, a malfunctioning thermostat, or a faulty safety switch. Unusual noises like clicking, rattling, or buzzing can indicate a loose component, a malfunctioning fan, or a problem with the heating element. Step-by-step troubleshooting steps are provided for each issue.

1. Troubleshooting Common Problems: This section covers basic checks like power, thermostat, safety switch, and fan. It includes a list of common problems and their solutions.

2. Heating Element Issues: This section discusses how to check the heating element for signs of wear or damage, and how to replace it if necessary.

3. Thermostat Problems: This section explains how to check the thermostat settings, clean the thermostat, and replace it if it's not working properly.

4. Safety Switch Issues: This section describes how to locate the safety switch, check its operation, and reset it if it's tripped.

5. Fan Motor Issues: This section covers how to check the fan motor, clean the fan, and replace it if it's not working.

6. Overheating Issues: This section discusses how to check for overheating, clean the heater, and replace the thermal fuse if it's blown.

7. Unusual Noises: This section explains how to identify the source of unusual noises, clean the heater, and replace the fan motor if necessary.

8. Electrical Issues: This section covers how to check for electrical problems, such as a blown fuse, a faulty power cord, or a problem with the electrical system.

9. Preventive Maintenance: This section provides tips on how to maintain your space heater to prevent problems from occurring in the first place.

10. Conclusion: This section summarizes the key points of the guide and encourages readers to stay safe when using their space heaters.

The guide is written in a clear, concise, and easy-to-understand style, making it accessible to a wide range of readers. It includes a lot of practical advice and step-by-step instructions, which are helpful for anyone who is having trouble with their space heater. The guide is also well-organized, with clear headings and subheadings that make it easy to find the information you need.

unit, check if the circuit breaker is in good condition or not. Therefore, a blown fuse is also responsible for the heater not turning on.We recommend you plug your space heater into an electric outlet that is not used to power other electric appliances. If the circuit breaker gets faulty, replace it or plug your heater into another standard outlet. Check the heater if there is any obstruction to it. Dirt, debris, or particles can make a home in your space heater. And it may make your heater malfunction. In the worst cases, it may be responsible for an overheated heater. If you find any obstruction, turn off your heater and unplug it from the electric outlet. Then, leave the heater for several minutes to let it cool down. Finally, remove the obstruction. 4. Internal Temperature Exceeds Normal Operating TemperatureEvery space heater comes with an overheating safety feature. If the internal temperature of your heater exceeds the normal operating temp, your heater will automatically shut down. Just turn off the heater and detach it from the electric connection. Then, leave your heater for 10-15 minutes to let it cool down. Next, plug the unit into the outlet and turn it on.If the heater still gets overheated, turn it off and reach out to the manufacturer's support team for help. Setting the thermostat too low is another culprit that will shut off your Pelonis heater automatically. Besides, the unit will turn off if the room temperature goes higher than the temperature you set on your thermostat. Setting the thermostat to a High position will solve the issue. If it doesn't fix this issue, call customer service for help. 2 More Issues With Your Pelonis HeaterHere are two more problems and their simple solutions with your Pelonis heater:Sometimes the oil-filled heater from Pelonis won't heat up when the pilot light is on. It happens if the thermostat fuse gets burnt.So, replace the thermostat fuse and make sure you connect the wires tightly. Then, test the thermostat with a multimeter and you should get less than 1 ohm. Your Pelonis heater may smell like it burns something. There are three reasons behind the burning smell. They are:Maybe some foreign objects get stuck between the sections of the coils.The circuit gets overheated and makes the cord or outlet too hot also.May have been a tiny oil leak in the coils.Firstly, unplug the heater from the electric outlet and let it cool. Then, remove the obstruction from your heater. Secondly, change the defective circuit. Finally, call customer service to fix the tiny oil leak. Here is how to reset the Pelonis heater: Turn the unit off. Then, you should unplug it and leave it for 10 minutes. And finally, plug the unit into the electric outlet and turn it on. Make sure the power switch knob is in the off position. Then, plug the heater into a standard 120V outlet. Next, power on your heater and turn the power switch knob to your desired position (low, medium, and high). Finally, turn the thermostat to Min or Max. Yes, heaters can cause power outages if you plug another appliance into the outlet where you already plugged the heater and turn it on. If you want to let your Pelonis heater function smoothly for years to come, maintain this heater properly. Clean the unit before and after the winter season. Then, follow the troubleshooting steps we mentioned to detect the problem your heater goes through. Then, take the step to solve a specific problem. Otherwise, call customer service to solve the issue for you if you can't fix the heater problems by yourself.