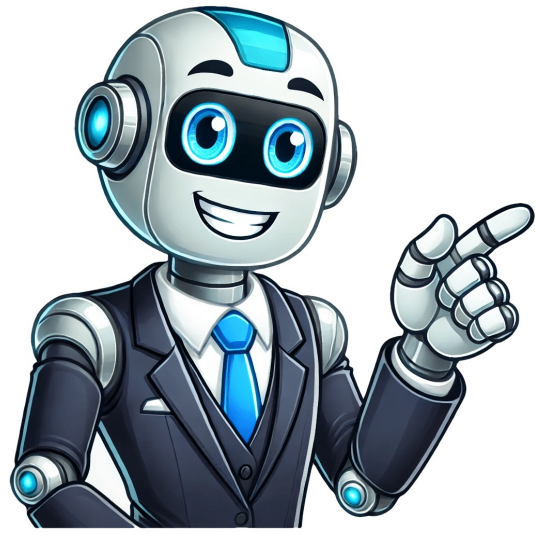


Continue



Saliva drug test detection period

James Gunter • May 21, 2024 Why you can trust Drug Testing Kits UK for advice on choosing the right drug testing products. Our team of UK drug and alcohol safety experts meticulously analyzes current regulations and scientific data while incorporating feedback from real-world users of our products. Additionally, we consult with healthcare and industry professionals to ensure that our recommendations are practical and valuable. This reliable information can guide your decision-making process when selecting drug and alcohol testing kits suitable for your needs. At Drug Testing Kits UK, we understand the critical importance of accurate and timely drug testing. Our saliva drug test detection timetable is your go-to guide, providing clear and reliable information to ensure you make informed decisions. Whether for personal, professional, or medical use, our comprehensive timetable offers the insights needed for effective drug detection, helping you navigate the complexities of saliva drug testing with confidence. Saliva Drug Test Detection Timetable Navigating the world of drug testing with precision and reliability is essential. Our section on the saliva drug test detection timetable is designed to equip you with the exact information you need. Here, you'll find detailed timetables that lay out detection periods for various substances, ensuring you can assess the accuracy of your drug testing results confidently. This guide serves as an invaluable tool for individuals and professionals alike, seeking to understand the effectiveness of saliva drug tests and their role in maintaining safety and compliance. Drug Name Abbreviation Detection Period Detection level Alcohol ALC Real time 0.02%BAC Amphetamine AMP 2-3 days 50ng/mL Benzodiazepine BZO 4-12 Hours 10ng/mL Cannabis / Marijuana THC 8-12 Hours 12ng/mL Cocaine COC 1-2 days 20ng/mL Ecstasy MDMA 2-3 days 50ng/mL Fentanyl FYL 2-5 Days 100ng/mL Ketamine KET 48-72 hours 50ng/mL Methadone MTD 8-12 hours 30ng/mL Methamphetamine mAMP 2-3 days 50ng/mL Opiates OPI 7-21 hours 40ng/mL Oxycodone OXY 2-3 days 20ng/mL Phencyclidine PCP 12-24 hours 10ng/mL Synthetic Marijuana K2/Spice Up to 48 hours 5ng/mL Tramadol TML 3-5 Days 50ng/mL Top Tips for Increasing Accuracy To maximize the accuracy of saliva drug tests, consider these top tips: Follow Instructions Precisely: Adherence to the testing kit's guidelines is crucial for reliable results. Timing is Key: Conduct tests within the optimal detection window for specific substances to ensure accuracy. Avoid Contamination: Ensure the test subject avoids eating, drinking, or smoking for at least 10 minutes before testing to prevent sample contamination. Store Kits Properly: Keep testing kits in their recommended conditions to maintain their efficacy. Check Expiration Dates: Always use kits within their validity period to guarantee accurate readings. How long are drugs detectable in urine and saliva? Understanding the detection window for drugs in urine and saliva is pivotal for accurate testing. Generally, saliva drug tests can detect substances within a few minutes to 48 hours after use, offering a shorter detection period compared to urine tests, which can identify drug use for up to several days or even weeks, depending on the substance. The specific duration drugs remain detectable in urine and saliva varies significantly based on factors such as the type of drug, frequency of use, metabolism, and overall health of the individual being tested. Factors Influencing Drug Detection Times in the Body Type of Drug: Different substances metabolize at varying rates, affecting detection times. Frequency of Use: Regular use can extend the detection window compared to occasional use. Metabolism Rate: Individuals with faster metabolisms may process drugs more quickly. Body Mass: Heavier individuals may retain drugs in their system for longer periods. Age: Metabolism generally slows with age, potentially prolonging detection times. Health and Organ Function: Optimal liver and kidney function can decrease detection times by efficiently processing substances. Hydration and Diet: Hydration levels and dietary habits can influence how quickly drugs are metabolized and eliminated. Urine Drug Test Detection Timetable The Urine Drug Test Detection Timetable serves as a detailed guide, outlining the detection windows for a wide range of substances in urine samples. Tailored to deliver critical insights, this timetable helps you grasp the duration of various drugs that can be identified post-use, reflecting the longer detection periods urine tests offer compared to other methods. Ideal for those requiring a more extended detection window, our guide supports informed decision-making in both professional and personal contexts, ensuring users can rely on accurate, comprehensive data for effective drug monitoring and management. Drug Name Abbreviation Detection Period Up To Cut off Cannabis (Marijuana, Weed) THC 5-30 days 50ng/mL Cocaine COC 3-5 days 150ng/mL Ketamine KET 3-5 days 1000ng/mL Lysergic Acid LSD 2-5 days 20ng/mL Methadone MTD 2-8 days 300ng/mL Methaqualone MQL 12-14 days 300ng/mL Methylenedioxypyrovalerone MDPV 3-5 days 1000ng/mL 6-monoacetylmorphine DMA 2-5 days 10ng/mL Opiate / Morphine MOR/P 2-5 days 300ng/mL Opiate / Morphine OPI 2-4 days 2000ng/mL Phencyclidine PCP 7-14 days 25ng/mL Pregabalin PGB 3-5 days 500ng/mL Propoxyphene PPX 1-2 days 300ng/mL Synthetic Marijuana K2/Spice Up to 72 hrs 50ng/mL Tramadol TML 3-5 Days 300ng/mL What Factors Influence the Detection Times in Saliva Drug Tests? The detection times in saliva drug tests are influenced by several key factors, including the specific type of drug being tested, as drugs have varying metabolic rates and solubilities that affect how long they remain detectable in saliva. The frequency and quantity of drug use also play significant roles, with habitual or heavy use extending the detection window. An individual's metabolic rate can speed up or slow down the rate at which drugs are processed and eliminated from the body, and overall health, particularly the efficiency of the liver and kidneys, can impact drug detection times as well. How Can I Ensure I'm Using My Saliva Drug Test Kit Correctly? Ensuring the correct use of a saliva drug test kit involves a few critical steps. First, thoroughly read and understand the instructions provided with the kit to avoid any procedural errors. Before administering the test, make sure the individual being tested has not ingested food, drink, or tobacco products in the 10 minutes prior, as this can contaminate the sample. Always check that the test kit is within its expiration date and has been stored under the recommended conditions to maintain its integrity. Following these guidelines closely will help ensure the accuracy and reliability of the test results. How far back can a saliva drug test show? Saliva drug tests typically have a relatively short detection window, capable of identifying drug use primarily within 24 to 48 hours after consumption. This period can vary based on the type of drug, with some substances becoming undetectable within minutes after use. The detection window is also affected by the frequency and amount of drug use, as well as individual differences in metabolism. For most drugs, saliva testing will not detect use beyond a couple of days, making it a preferred method for identifying recent drug intake. Why Choose Drug Testing Kits UK We offer unmatched quality, customer support, and a comprehensive range of workplace drug testing solutions to meet your needs. Customer support-we're here to help Chat online with us support@ukdrugtesting.co.uk 01263 731 168 UK Drug Testing customer support team are available 8.30am-4.30pm Monday to Friday (excludes all UK bank holidays) by chat, e-mail and telephone. If you do not wish to order online, or need any help or advice on choosing the correct drug testing kits, or have a query with an existing drug test order, then please call or email us or use the chat facility on the website. We do not use a call centre, so when chat, email or telephone us, you will speak to one of our dedicated customer support team. We use an answer machine out of office hours, or at busy times, so please leave a message, if you would like us to call you back. Address Access Diagnostic Tests UK LtdUnit 19 and Unit 15Aylsham Business EstateShepheards Close,Dunkirk,Aylsham,NorfolkNR11 6SZ Press, marketing and advertising Our marketing team work remotely so please contact them by e-mail only Contact Form-send UK Drug Testing an enquiry Under normal circumstances, all orders received Monday to Friday before 3pm (excluding Bank Holidays) will be dispatched on the same day. Orders placed after 3pm on weekday, on weekends, or bank holidays are dispatched the next working day. This means that an order placed after 3.00pm on a Friday will not be dispatched until the following Monday (unless that is a bank holiday) All of our outer packaging is discreet brown or white padded envelopes, grey courier bags or boxes with no company advertising or logos. You can select the following UK shipping options on the checkout page: Royal Mail Tracked 24 £3.95 usually 1-2 days after dispatch, currently free over £50. Royal Mail Special Delivery £9.95-£14.95 Next business day for UK mainland. Must be ordered before 3pm Monday To Thursday to be dispatched same day (excludes bank holidays). UK Courier £9.95 1-2 days after dispatch from us. Free when you spend over £250 in a single transaction.Only available on orders over £50. Saturday Courier Delivery £14.95 UK mainland only (not highlands and islands) and needs to be ordered before 2pm Friday (only available on orders over £75 and up. UK Express Next Day Courier £25 (only available on orders over £150 and must be ordered before 1pm Monday to Friday, excludes bank holidays. Delivery usually before 1pm) You can also select pickup as an option, and collect your order from our office in Aylsham Norfolk during our office hours. Please note the delivery times after dispatch is an estimate, these delivery times are not guaranteed unless specified. Under normal conditions (excludes Christmas and New Year) your mail would be delivered as detailed below: Royal Mail Tracked 24 £3.95 currently free when you spend over £50 - Provides full online tracking to enable you to keep track of the delivery progress, with email notifications automatically sent to the email address you used for your order. Royal Mail aim to deliver tracked 24 items within 1-2 working day of dispatch. Royal Mail Special Delivery £9.95-£14.95- For orders up to £120 delivery charge is £9.95 and above this £14.95. Signature or proof of delivery required so someone needs to be in to accept the delivery. Royal Mail guarantee to deliver all packages before 1pm on the next working day after dispatch (guarantee only applies to UK mainland and this does not includes orders dispatched on a Friday which may be delivered Saturday but are not guaranteed to arrive on the Saturday, some may arrive Monday before 1pm). Email notifications are automatically sent to the email address you used for your order. Please note that any Special Delivery orders placed after 3.30pm on a Friday will not be dispatched until the following Monday and thus will not be delivered until the Tuesday. This option is only available on small orders up to £249.99. No Sunday delivery. Next day delivery guarantee excludes highlands, islands and Northern Ireland. UK Courier £9.95. (Free when you spend over £250 and only available on orders over £50) Under normal circumstances delivery is usually next working day from dispatch if ordered Monday to Thursday before 3pm. Delivery will usually be 1-3 days when ordered overnight or on weekends. Best delivery option for large orders. Excludes Northern Ireland. UK Saturday Courier £14.95 only available on orders over £75. Select this courier option if you wish your order to be delivered on a Saturday. UK mainland only and excludes highlands, islands and Northern Ireland. UK Express Next Day Courier Before 1pm £25.00 Delivery next working day after dispatch usually before 1pm. Highland and islands may take longer. Excludes bank holidays and weekends. Order must be placed before 3pm Monday to Friday to get next day delivery. Only available on orders over £150 in value. No delivery on Sundays. For Saturday delivery please select the Saturday delivery option on website. Priority packing and dispatch from our UK warehouse. If ordered on a Friday delivery may be on the Saturday. Next day delivery guarantee excludes highlands, islands and Northern Ireland. See below for delivery info for Northern Ireland. Only available on orders over £150. Pickup If you are local and would prefer to collect your order, collection is available during our office hours Monday to Friday between 8.30 and 4.30pm. Collection is not available on weekends or bank holidays. Once you have processed your order online, our customer support team will contact you to arrange a collection time. If you select this option during checkout goods may be collected from: Access Diagnostic Tests UK LtdUnit 19 Aylsham Business EstateShepheards Close,Aylsham,NorfolkNR11 6SZ Delivery to Northern Ireland For deliveries up to £200 in value you can select a Royal Mail delivery service (excludes express delivery). For large orders over £70 to Northern Ireland you can now select courier delivery with delivery usually in 2-3 working days from dispatch for just £25.99. The price increase on the courier delivery to Northern Ireland, is due to changes in customs regulations causing delays in delivery to NI following Brexit. There are currently no free delivery offers for Northern Ireland. For larger orders or if you have any questions regarding delivery to Northern Ireland please contact our trade team, International delivery options To place an order from outside the UK please contact our trade team Delivery FAQ When will my drug test order be dispatched? We aim to get your order into the next mail or courier collection available after your order is received. Most orders before 3.30pm on weekdays Monday to Friday are dispatched the same day. Orders placed after 3pm on weekday, on weekends, or bank holidays are dispatched the next working day. This means that an order placed after 3.00pm on a Friday will not be dispatched until the following Monday) Do you offer an express delivery option? If you require your goods urgently please select the one of our Express Delivery options. Express Delivery is either by Royal Mail Special Delivery or by next day courier depending on the size of the parcel. A signature is usually required on an express delivery. (currently may take photo) Do you offer a guaranteed next day delivery service on drug tests? We offer several next day UK delivery options depending on the size of your order. These may be selected at checkout. Is your delivery service discreet? We respect your confidentiality and our packaging is very discreet. All orders are packaged in plain packaging with no company advertising or logos. Is a signature required on delivery? Some of our larger packs may require a signature or photos at delivery. The express delivery services normally require a signed for delivery. We reserve the right to upgrade any order to a signed for delivery, if we deem this necessary. Currently most of the couriers are not taking a signature due to Covid regulations. Many are taking a photograph instead. How do I check on my drug test order? You will be e-mailed or texted when we process your order and again when the parcel is dispatched. We will inform you or any tracking refs also. You can track your order through our chat. What do I do if my order does not arrive when expected? Orders not received within 7 days should be notified by e-mail to customer services with details of your order number and/or payment transaction number. How do I contact you about an order? You can e-mail our customer services team to check on the status of your order at customerservices@accessdiagnostics.co.uk You may also chat with us online or telephone us during office hours Monday to Friday 8.30 am to 4.30 pm on 01263 731 168. Please have your order number before contacting us as this makes it easier to access your order tracking. Please ensure you use a valid and current e-mail address or mobile phone number when ordering. You will receive all confirmation and reference numbers relating to your purchase by e-mail or text. Retain these details until your order has been delivered, and please quote these in any correspondence to us regarding your order. If you need to contact us about your drug testing kits order: UK Drug Testing delivery information page and free UK delivery offers last reviewed and updated 1/4/25 Under the Railways Transportation Safety Bill, the UK government introduced lower drink drive limits for those working in the transport industry. The drink drive limit for professional drivers and operatives is just 0.02% - one quarter the UK Drink-Drive limit of 0.08% and the lowest detectable level possible allowing for the residual levels that can exist in anyone whether they've been drinking or not. The lower drink drive limits in UK also apply to pilots, cabin crew, air traffic controllers, aircraft engineers, train drivers, and commercial seamen.Scotland lowered its drink drive limit for drivers on a normal driving license from 0.08%BAC to 0.05%BAC on 5th December 2014. The limit for professional drivers in Scotland is still 0.02%BAC.Most western European countries, although not all, have a drink drive limit of 0.05, the same as Scotland. It is important to note that many of many of the eastern European countries have a zero tolerance. Austria 0.05%BAC (0.01%BAC license