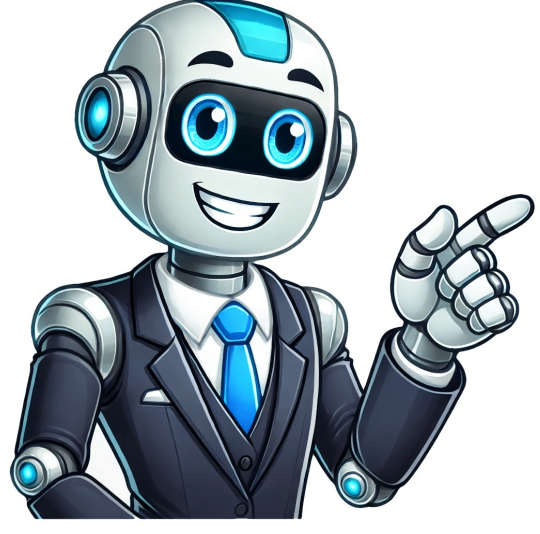


Continue



Welcome to our new home on WA.gov.au. Please use the links below or search to find what you are looking for. New figures reveal record mining sector employment in Western Australia. Seeking valuable insights to improve our customer experience. A concrete manufacturing company has been fined \$580,000 (and ordered to pay \$6180 in costs) after a worker was seriously injured at its Neerabup concrete batching plant. Metallica fans for whom nothing else matters but attending this years popular show at Optus Stadium are urged to be alert to the risks of buying resale tickets online. Supporting a safe, fair and responsible future for Western Australian communities, industries, energy and resources sectors. Develops, enforces and promotes legislation that protects consumers. Attorney General; Minister for Commerce; Tertiary and International Education; Multicultural Interests Minister for Creative Industries; Heritage; Industrial Relations; Aged Care and Seniors; Women Minister for Energy and Decarbonisation; Manufacturing; Skills and TAFE; Pilbara Minister for Mines and Petroleum; Finance; Electoral Affairs; Goldfields-Esperance Gas Monitor Rentals Go beyond basic gas detection by renting live monitoring and other connected safety tools that make it easy to monitor your site remotely, increase worker safety, track productivity, and more throughout any turnaround, shutdown, or other special project. Renting is the most efficient way to quickly obtain gas detection equipment. Flexible terms and fast shipping help you get what you need, when you need it. Whether the driving factor is a turnaround, outage, special project, natural disaster, or repair replacement, you can depend on our rentals for your short-term gas detection needs. Request Gas Detection Rental Information The document outlines a comprehensive on-site rescue plan for confined spaces, emphasizing the essential procedures and equipment required for efficient rescue operations. Key aspects include preparations before entry, communication protocols during work, and specific actions to take during emergency situations. The plan highlights the roles and responsibilities of the entry supervisor and attendant, ensuring the availability of adequate rescue resources and trained personnel to facilitate a safe and effective rescue response. Confined spaces present unique dangers that workers must be prepared to handle. Despite tight regulations and technological advancements, permit-required confined space entry accidents and fatalities remain a problem. According to OSHA, confined spaces are responsible for around 200 deaths every year and 60% of those deaths are workers who were attempting a rescue. What is the key to mitigating the risk of working in confined spaces? In some cases, it could be as simple as reminding workers of acceptable and dangerous confined space gas levels. After all, low oxygen levels are the most frequent culprit of gas-related deaths in confined spaces. Common Confined Space Gas Levels Awareness of oxygen and combustible gas levels is essential for anyone tasked with entering a confined space, but those are not the only two confined space gas levels to be aware of; carbon monoxide and hydrogen sulfide are also common concerns. However, workers must understand the particular hazards of any environment they are entering and take appropriate measures by wearing a confined space monitor. 1. Oxygen OSHA dictates that the minimum "safe level" of oxygen in a confined space is 19.5%, while the maximum "safe level" of oxygen in a confined space is 23.5%. With low oxygen levels being the biggest cause of death in confined spaces, accurate oxygen level measurements are essential. Workers must sample the oxygen level prior to entering a confined space and should monitor it continuously throughout the work. If a confined space's oxygen concentration surpasses 23.5%, the space is too oxygen-rich and could result in the ignition of combustible gases. On the other hand, low oxygen levels impair judgment and coordination. Extremely low levels of oxygen cause nausea, vomiting, and loss of consciousness. When oxygen levels are too low, that typically means another gas is displacing it. In these instances, its important to know what gas is displacing oxygen and why. 2. Combustible Gases Since gases cannot combust without enough oxygen, a confined spaces oxygen level can give you an idea of the concentration of combustible gases. There are two levels to take attention to when measuring combustible gases: Lower Explosive Limit (LEL). This is the lowest concentration of a gas in the air that can combust or produce a flame when paired with an ignition source. Upper Explosive Limit (UEL). This is the highest concentration of a gas in the air that can combust or produce a flame when paired with an ignition source. If a gas concentration is below its LEL, it cannot ignite, and the confined space is considered safe. If the gas concentration is above its UEL, the gas is too rich and theres not enough oxygen for combustion. Of course, LEL and UEL differ for each gas. Methane, for example, has an LEL of 5% vol and a UEL of 15% vol. Methane combustion is possible when the gas level is at or above 5%, but below 15%. Here is a list of common combustible gases and their lower explosive limits: Gas detectors display a gas's presence as a percentage of its LEL. An atmosphere free of methane would show 0% LEL on the gas detector, but an atmosphere containing 5% methane would display 100% LEL. Its essential to be constantly aware of combustible gas levels while in confined spaces because they could change over time. A gas far above its UEL wont ignite, but ventilation could dilute the gas and its concentration could quickly enter a combustible range. 3. Carbon Monoxide and Hydrogen Sulfide Multi-gas monitors are frequently configured for carbon monoxide and hydrogen sulfide, but these two gases arent necessarily the most common in confined spaces. In fact, because carbon monoxide is the result of incomplete combustion, its uncommon in most confined spaces unless machinery is used inside. While both of these gases are extremely toxic, confined space workers need to understand the hazardous gases they are most likely to encounter based on their specific application. Workers may be better protected by configuring their confined space monitor for other common gases. It is still useful to be aware of the acceptable and dangerous levels of these gases. If carbon monoxide and hydrogen sulfide are gas hazards your workers could encounter, be sure they know the LEL/UEL for the hazards as well as OSHAs permissible exposure limit (PEL) for each gas, which sets a limit on the amount of exposure for a worker within an 8-hour period. Hydrogen sulfide has a PEL of 20 parts per million (PPM) and an LEL of 4.0%. Carbon monoxide has a PEL of 50 PPM and an LEL of 12.5%. Keep in mind that permissible exposure limits can vary by jurisdiction, so the PELs OSHA lists for hydrogen sulfide and carbon monoxide are not universal. The Importance of Direct-Reading Portable Gas Monitors in Confined Spaces Gas hazards are unpredictable and confined spaces are dangerous, making it very important for confined space workers to continuously monitor gas levels with a direct-reading portable gas monitor. Direct-reading monitors not only tell workers whether the atmosphere in a confined space is safe, but also how safe. Is the oxygen concentration just barely above 19.5%, or is there enough margin to allow work to continue uninterrupted? Safety laws require a pre-entry test just prior to a worker entering a confined space, and workers are only required to test again after leaving the space and preparing to reenter. Naturally, this leaves a lot of room for error if atmospheric conditions change while a worker is within the confined space, which is likely why confined space injuries and fatalities occur so frequently. Periodic testing throughout the entry may be required if the confined space has a history of changing gas conditions, but periodically leaves room for interpretation by workers or the company. A safer procedure is to arm all confined space workers with direct-reading personal gas monitors and ask them to continuously monitor for gas hazards throughout the work period. If conditions begin to trend toward danger, workers will have the notice they need to exit the confined space safely. If you rely on alarm-only monitors, this wouldnt be possible. Because alarms are set to go off at predetermined thresholds, alarm-only instruments wont give workers a heads up to potential dangers. A direct-reading gas monitor, like the Ventis Pro5, displays gas levels so workers can see the exact reading, allowing them to make more informed decisions about whether entry is a wise choice and whether they can continue their work safely. Adding continuous monitoring to your confined space entry procedures is a simple way to improve worker safety. You can achieve continuous monitoring by asking workers to wear personal monitors or by using an area monitor inside the space. You can improve safety even further by connecting personal monitors or area monitors to a hole watch via LENS Wireless, enabling monitors to share gas readings and alarms so the attendant always knows exactly whats happening within the confined space. DOT/ATA/IMDG COURSESGROUND, AIR & SEA COURSES49 CFR DOT Hazmat for TransportersDOT Hazmat for Packaging & ShippingELDT Hazmat EndorsementsATA DGR 1.5IMDG DGR 1.3.1Hazmat Manuals & more!HAZWOPER COURSESHAZWOPER COURSES24-hour HAZWOPER Initial Course8-hour HAZWOPER Refreshers8-hour HAZWOPER Supervisor & more!EPA HAZARDOUS WASTE COURSESEPA COURSESRCA Hazardous Waste CourseTitle 22 CA Hazardous Waste CourseDOT/RCRA Waste Manifest CourseDOT/22 Waste Manifest CourseFIRST RESPONDER COURSEFIRST RESPONDER COURSESFIRST Responder AwarenessFirst Responder w/Spill Clean-UpFirst Responder OperationsOn-Scene Incident CommanderOSHA SAFETY COURSEOSHA SAFETY COURSESAbestos AwarenessConfined Space OperationsExcavation & TrenchingCrime Scene Clean-upBloodborne PathogensHazard CommunicationSilica in ConstructionSexual Harassment PreventionFall Protection & many more!SPANISH COURSESPANISH COURSESNOW Available!Safety has more than one languageGroup & Government DiscountsOn-Call 24/7 Remote Instructor HelpUseful Links & Reference Books Included With CoursesCorporate Accounts For Managing & Enrolling Groups100% Guaranteed To Meet Your Regulatory RequirementsNeed your OSHA, DOT, IATA, or EPA Hazardous Waste certification fast? Our 100% online Hazmat certification training courses are available 24 hours a day, 7 days a week, so you can complete your DOT hazardous materials training at any time on any type of device. All of our courses are designed to be self-paced, so you can work comfortably at your own speed. Upon completion of OSHA Hazmat training, your certificate will be available to you right away. You also wont have to worry about your certificate expiring. We maintain records of your completed courses and send you email notices when refresher courses are due. All of our online Hazmat certification training courses were developed by our Remote Instructors, who are active safety professionals at Safety Compliance Management. Our students come from a variety of industries including construction, manufacturing, automotive, aerospace, shipping, and engineering. We offer a wide variety of Hazmat certification courses, and no matter what state you live in, all of our online OSHA Hazmat training courses satisfy the national requirements, so we have you covered! If your job requires you to have a Hazmat certification, look no further than Hazmat School. Serving more than 20,000 students each year, you can rely on our commitment to the highest quality professional learning experiences. Contact us at 877-674-2669 to enroll or learn more about each of our online DOT hazardous materials training courses. We look forward to helping you meet your organizations compliance goals!Crime Scene Clean-up Training Course - \$129Crime Scene Clean-up Training Course - \$129Many companies and services come and go, but one thing is always a necessity: cleaning. Commercial businesses, in particular, require cleaning services all the time. OSHA Asbestos Awareness Training (2 Hour) - \$45OSHA Asbestos Awareness Training (2 Hour) - \$45Asbestos is a naturally occurring mineral consisting of microscopic fibers that boast exceptional resistance to heat, electricity and corrosion. DOT/RCRA Hazardous Waste Training - \$279DOT/RCRA Hazardous Waste Training - \$279The structure and objectives of this course are based on compliance with RCRA 40 CFR, Parts 262.34 and 265.16. OSHA Confined Space Operations Training - \$590OSHA Confined Space Operations Training - \$590Confined spaces present potential hazards that could harm you or others working around you. DOT Basic Hazmat Employee Course - \$139DOT Basic Hazmat Employee Course - \$139Our online DOT Hazmat course meets the requirements in 49 CFR 172.704. IATA/ICAO Dangerous Goods Online Training - \$239IATA/ICAO Dangerous Goods Online Training - \$239When shipping dangerous goods by air, your entire team must follow standardized travel regulations. Take this course to start shipping Hazmat by air today! International Maritime Dangerous Goods (IMDG) Course - \$239IMDG training prepares those transporting hazardous materials with the foundational knowledge they need to ship these goods according to IMDG regulations. OSHA HAZWOPER Refresher Training (8 Hour) - \$79OSHA HAZWOPER Refresher Training (8 Hour) - \$79Earn your HAZWOPER Refresher certification with our self-paced course. Truck Driver's Truck Driver's safety training helps your employees get the necessary skills to operate vehicles safely, safely transport hazardous materials and assists you in meeting the industry requirements. Construction Construction safety training is vital to keep you and your employees safe and in agreement with regulations. At Hazmat School, we offer construction safety courses with a 100% regulatory compliance guarantee. Manufacturing Manufacturing safety training helps you comply with regulatory requirements and creates a safer working environment for your employees. Hazmat School offers various safety courses and a 100% compliance guarantee. Science & Laboratory Science & Laboratory Science organizations and laboratories must be up to date with the latest safety training courses to ensure lab workers operate in a safe environment and know how to work with hazardous materials. As you already know, its essential for everyone in our industry to receive the proper safety and educational training they need to stay safe, healthy and be productive. Whether your current job requires a mandatory training refresher, or youre looking to add additional certifications to your hazmat tool belt, our online Hazmat shipping training courses and certifications will enable you to reach your goals. Before making your selection, we encourage you to look over our online OSHA HAZWOPER certification, browse our DOT Hazmat training and certification services, explore our EPA Hazardous Waste online certification and learn about our online OSHA safety training company. You can take our training courses at your own pace, anytime, anywhere. Keep reading to learn more. We offer HAZWOPER courses and initial training. These online classes ensure you stay up to date with the latest Hazardous Waste Operations and Emergency Response (HAZWOPER) rule. You will learn how to protect yourself against hazardous waste spills, how to react in an emergency, and how to proceed with caution in uncontrolled sites. EPA waste treatment facilities and storage/disposal centers. If you have a job that requires you to handle, ship or transport hazardous materials, then this online training is for you. Our detailed HM-181 course is a great place to start for your DOT Hazmat training and certifications. The United States Department of Transportation (DOT) established this set of regulations to keep Hazmat employees safe. This course covers all the basic material you need to know. Beyond our basic DOT course, we also offer the following online courses: DOT with Packaging: Learn to package hazardous materials safely and effectively. International Shipping: Learn to ship hazardous materials internationally by air or sea. Hazardous Waste Courses: Refresh your overall understanding and knowledge of storing, shipping or transporting hazardous waste. Multimodal DOT/IATA/IMDG: Take our all-encompassing training course for a multidimensional certification. To fulfill your EPA hazardous waste online certification, we offer comprehensive RCRA Hazardous Waste Generator courses. This training will teach you how to handle hazardous waste in large and small quantities while following EPA regulations. If you work with any kind of hazardous waste, this training is mandatory. In our hazardous waste course, you will learn basic toxicology, how to identify hazards and waste, how to follow regulations, how to properly store the wastes, how to fill out a hazardous waste manifest and more. Our online courses are affordable and flexible. You can take them on your own time whenever works best for you. Were proud to be an industry leader in online OSHA safety training. We carefully design our courses to include everything you need to know to keep yourself and your co-workers safe and keep up with domestic and international regulations. Your safety and skills matter to us, and thats what motivates us to keep improving our materials and course offerings. When you train with us, you enjoy the following benefits: Meet your OSHA, DOT, and EPA training requirements with our interactive training courses. Students will have access to their 24/7 remote instructor to help them along the way or answer any specific questions they may have. Training coordinators can set up corporate accounts to make it easy to sign up and enroll multiple employees with one training program. Track employee progress, have access to employee certificates when needed, and receive reminders when employees are due to renew their certifications. Useful links and reference books within our courses. Receive group and government discounts. Courses are 100% guaranteed to meet your regulatory requirements. Hazmat School is proud to offer the most affordable Hazmat training options available online. All of our courses are available through our website portal, so you can register for them anytime. Contact us today with any questions or register now! 91%(1191) found this document useful (11 votes) 14K views This document provides a template for a confined space rescue plan. It outlines procedures for identifying the confined space and hazards, designating on-site or off-site rescue services, mSaveSave Confined Space Rescue Plan Template For Later 91%(91) found this document useful, undefined Share copy and redistribute the material in any medium or format for any purpose, even commercially. Adapt remix, transform, and build upon the material for any purpose, even commercially. The licensor cannot revoke these freedoms as long as you follow the license terms. Attribution You must give appropriate credit , provide a link to the license, and indicate if changes were made . You may do so in any reasonable manner, but not in any way that suggests the licensor endorses you or your use. Share Alike If you remix, transform, or build upon the material, you must distribute your contributions under the same license as the original. No additional restrictions You may not apply legal terms or technological measures that legally restrict others from doing anything the license permits. You do not have to comply with the license for elements of the material in the public domain or where your use is permitted by an applicable exception or limitation . No warranties are given. The license may not give you all of the permissions necessary for your intended use. For example, other rights such as publicity, privacy, or moral rights may limit how you use the material. How can financial brands set themselves apart through visual storytelling? Our experts explain how. Learn More The Motorsport Images Collections captures events from 1895 to todays most recent coverage. Discover The Collection Curated, compelling, and worth your time. Explore our latest gallery of Editors Picks. Browse Editors' Favorites How can financial brands set themselves apart through visual storytelling? Our experts explain how. Learn More The Motorsport Images Collections captures events from 1895 to todays most recent coverage. Discover The Collection Curated, compelling, and worth your time. Explore our latest gallery of Editors Picks. Browse Editors' Favorites 100%(1100) found this document useful (1 vote) 857 views This document outlines a generic confined space rescue plan for internal rescue services. It establishes guidelines for deploying safe and effective confined space rescue operations. The plaSaveSave Confined Space Entry Rescue Plan GENERIC For Later 100%(100) found this document useful, undefined Confined spaces pose potential hazards that can endanger you or others working around you. The Occupational Safety and Health Administration (OSHA) mandates that all workers potentially performing duties in a confined space receive essential training under Title 29 Code of Federal Regulations Part 1910.146 Permit-Required Confined Spaces. This training promotes a safe work environment and outlines the proper procedures for working within confined spaces. Workers must complete this training before performing their duties, and employers may require additional confined space safety training before allowing workers to enter a confined space. Hazmat School provides this training, and upon completion, you will receive a confined space certification. OSHA Confined Space Safety Training Online Confined space training is essential for all workers entering or performing duties in a confined space. These spaces are dangerous and require quick exits in emergencies. Communication and mobility are limited in a confined space, and knowing proper procedures will help keep you and those around you safe. Confined Space training is essential for industries such as Mining Construction Transportation Storage Agriculture Freight Our online training course will provide you with all the information and resources you need to identify a confined space, understand your responsibilities in such areas and the limitations of your equipment and determine proper entry procedures. WHO SHOULD TAKE THIS CLASS? The OSHA confined space safety training is necessary for workers who may enter confined spaces with potential hazards, including confined space entrants and attendants. Answer these questions to see if you need this training: Are you required to enter confined spaces? Do you work as an attendant in a confined space job? Do you work in pits, tanks, silos, tunnel or pipes at your job? Do you conduct work in or enter permit-required confined spaces? If you answered yes to any of these questions, you are required to take this course! Our online OSHA confined space training course is designed to comply with OSHA's standard for confined spaces and safety procedures, which contains the requirements for procedures and practices to protect employees from hazards they may encounter when entering permit spaces, or permit-required confined spaces. The OSHA Confined Space standard requires employers to create a written permit program for confined space entry and train employees in confined space safety. What Is Considered a Confined Space? According to OSHA, a confined space has a configuration that hinders employee activity. These spaces have limited or restricted exits and entries, and employees cannot continuously occupy them. Confined spaces include tanks, storage bins, manholes, silos, process vessels, pipelines, vaults and pits. OSHA defines permit-required confined spaces as areas with potentially hazardous materials or atmosphere within and/or a configuration that can trap, engulf or asphyxiate. Any confined environment that poses a known safety hazard, such as exposed live wires or loose material, will require a signed permit for an employee to enter. Its critical to understand the various dangers in order to ultimately save lives. INDUSTRIES THAT REQUIRE THIS COURSE Numerous sectors feature confined spaces within their work environments. From mining and aerospace to agriculture to emergency response, workers in various industries may find themselves entering confined spaces regularly. Given the critical importance of protecting worker safety and preventing accidents, OSHA confined space training is indispensable for many employees, as it is integral to their daily responsibilities. This training program plays a crucial role in fostering a secure work setting and equipping all staff members with the essential knowledge to carry out their tasks in confined spaces safely. WHAT REQUIREMENTS DOES THIS COURSE SATISFY? The confined spaces course satisfies the requirements found in 29 CFR 1910.146 and 29 CFR 1926 Subpart AA. This course will fulfill initial training and refresher training for employees in the general and construction industry. After completing this course, you will receive certification in compliance with OSHA requirements and regulations that allows you to perform routine duties in confined spaces. How Often Does OSHA Require Confined Space Training? Although some OSHA training requires refresher training by a specific time, OSHA confined space training requirements do not mandate specific frequencies for renewal. Instead, they have other training specifications regarding when training should be provided, including: Before an employee changes or begins relevant duties When a hazard is present that was not initially present due to a change in operations Any time an employer believes workers are deviating from the correct entry procedures Any time an employer believes workers have inadequate knowledge of the procedures Employers must review and renew their permit program every year, and any rescue personnel must perform practice rescues at least once a year. Industry leaders suggest that you update your confined space training every couple of years. What to Expect in Confined Space Training Before beginning your course, you may have a few questions regarding course specifications. Here, you can find information regarding your course, starting with the topics you can expect to be covered in the course materials. We also go over how to complete this course successfully, deadlines, the grading policy, objectives and certification. Topics Covered This online training course for working in confined spaces was designed to be comprehensive and offer foundational awareness on both health and occupational hazards. It also includes how the creation and continual assessment of a site-specific or employer-specific permit program helps secure personnel safety. Within the course material, you'll find the necessary guidelines that employees follow for all permit-required confined space programs. This includes multiple OSHA entry options to permit spaces as well as atmospheric testing and ventilation procedures for ensuring environmental safety. These are necessary topics before any worker begins tasks within confined spaces, especially for new hires. Modules Summary & Training Outline Module 1 Intro Element 1.2 Welcome Element 1.3 Objectives Element 1.4 Contact Information Element 1.5 Confined Space Regulations Element 1.6 1.7 Confined Spaces in Construction Module 2 Definitions Element 2.1 2.2 What is a Confined Space? Element 2.3 1. Is the space large enough for someone to get in and work? Element 2.4 2. Is it hard to get in and/or out of the space? Element 2.5 3. Is it not designed for people to be in there continuously? Element 2.6 2.9 Is this a cubical considered a confined space? Element 2.10 2.13 What about this trench at a construction site? Element 2.14 Spot the violation Element 2.15 3 Questions Element 2.16 Pest Control Element 2.17 Two types of Confined Spaces Element 2.18 Non-Permit Confined Space Element 2.19 What is a Permit Required Confined Space? Element 2.20 Rule of Thumb Element 2.21 2.22 Confined Space Permit Element 2.23 Hot Work Permit Element 2.24 2.28 Quiz Module 3 Hazards Element 3.1 Fatalities Element 3.2 Recognizing Hazards Element 3.3 Atmospheric Hazard Element 3.4 3.5 Oxygen Levels Element 3.6 3.7 The Fire Triangle Element 3.8 3.9 Flammable Atmosphere Element 3.10 Sources of Information Element 3.11 3.12 Chemical Hazards Element 3.13 Permissible Exposure Limit (PEL) Element 3.14 Short-term Exposure Limit (STEL) Element 3.15 Immediately Dangerous to Life or Health (IDLH) Element 3.16 Check Off Ten Element 3.17 Monitoring Element 3.18 Ventilation Element 3.19 Ventilation Element 3.20 Physical Hazards Element 3.21 3.22 Engulfment Element 3.23 Entrapment Element 3.24 Mechanical Issues Element 3.25 Temperature Element 3.26 Slips, trips, or falls Module 4 CS Roles Element 4.1 Roles and Operations Element 4.2 Entrant Duties Element 4.3 Attendant Duties Element 4.4 Supervisor Duties Element 4.5 Rescue Team Duties Element 4.6 Video Element 4.7 Off Site Rescue Element 4.8 4.10 Hierarchy of Controls Element 4.11 Rescue Equipment Element 4.12 Fixed Point Element 4.13 Rescue Equipment Element 4.14 Hierarchy of Controls Element 4.15 Putting it all together Element 4.16 4.22 Quiz PDFFiller is an online PDF form filler and editor that has been on the market since 2006. It allows you to not only fill out PDF documents, sign them and send them out but also to host them on your own website complete with the ability for people to do the same. Today, I'm going to share with you my PDFFiller Review. I first came across PDFFiller when they reached out to me to ask if I was interested in taking a look at their software. Being a long time DocuSign user, I was eager to check out an alternative and see if it met my needs. I'm glad I did. PDFFiller is significantly easier to use and felt far faster in my time using the software. For the purposes of this PDFFiller review, I've used a W8 form from the IRS (something I often have to fill out being Canadian and working with US companies). When you first log into PDFFiller, you'll be greeted with this screen: To add a document, simply click on the Add New Form button. Now upload your document to PDFFiller and it will instantly be available for you to fill out. Now that you've uploaded your PDF document, just click in the fields and fill out the information required. It's as easy as clicking and typing. Once you've filled out the form, it's time to move to the signature stage. Adding a signature is incredibly easy, you can type one out, draw it with your mouse, use a touch screen device (if you have one), capture a signature or upload one. In my case, I chose to draw one with my mouse, which I find is as close as I can get to real life. In this instance, I'm using a fake name so I'll just sign the document as Joe. That's all there is to the signing and filling out process. Pretty simple isn't it? Let's take a quick look at a few other slick features you get with PDFFiller. Adding a watermark to documents is always handy and doing so simply requires you clicking on the watermark tab on the right side of the screen and creating yours. This is incredibly handy for those of us who want to show people how a form should be completed but don't want it to be re-used somewhere else. Adding in a SAMPLE or VOID watermark is useful. Adding even more features, PDFFiller also allows you to spell check your document. Of course, it can also spell check the information you've typed out but it's a great feature to make sure you haven't made any mistakes on your form. To enable it, simply flick the switch as shown below. Once you've finished with your document, it's time to send it off. You have a slew of options such as printing it, saving it as Word or PDF, emailing, faxing, SMS and more. There you have it, as you can see, it's a very easy to use piece of software and incredibly handy for busy professionals who don't have printers with them on the road. Last but not least, they have one feature I can see people using on their websites that is incredibly handy, the ability to share a document that can be filled out and signed by visitors to your website. Check out the video below to see how it works. Simply sign up for an account with PDFFiller and you'll be well on your way to signing contracts, PDFs and more. They also have handy iOS and Android apps that are just as easy to use.

Confined space rescue plan example. What is rescue plan for confined space. Rescue plan for confined space entry pdf. Emergency rescue plan for confined space pdf.