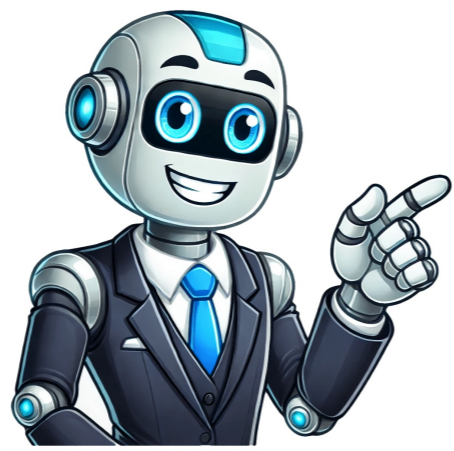


Click to prove
you're human



[illegible]

(2nd ed.). London, England; New York, NY: Jessica Kingsley Publishers. ISBN 1-4175-0103-0. OCLC 54768636. Davies, Martin (2002). The Blackwell Companion of Social Work (2nd ed.). Oxford, UK; Malden, MA: Blackwell. ISBN 0-631-22391-6. OCLC 49044512. Fischer, Joel; Corcoran, Kevin J. (2007). Measures for Clinical Practice and Research: A Sourcebook (4th ed.). Oxford, UK; New York, NY: Oxford University Press. ISBN 978-0-19-518190-6. OCLC 68980742. Greene, Roberta R. (2008). Social Work with the Aged and their Families (3rd ed.). New Brunswick, NJ: Transaction Publishers. ISBN 978-0-202-36182-6. OCLC 182573540. Grimmell, Richard M.; Unrau, Yvonne A (2008). Social Work Research and Evaluation: Foundations of Evidence-Based Practice (8th ed.). Oxford, UK; New York, NY: Oxford University Press. ISBN 978-0-19-530152-6. OCLC 82772632. Jansson, Bruce S. (March 14, 2017). Empowerment Series: Becoming An Effective Policy Advocate. Cengage Learning. ISBN 978-1-337-51433-0. Jordan, Cathleen (November 20, 2015). Clinical Assessment for Social Workers: Quantitative and Qualitative Methods. Oxford University Press. ISBN 978-0-19-065643-0. Linfield, Kenneth J.; Posavac, Emil J. (September 3, 2018). Program Evaluation: Methods and Case Studies. Taylor & Francis. ISBN 978-1-351-59201-7. Mizrahi, Terry; Davis, Larry E. (2008). Encyclopedia of Social Work (20th ed.). Washington, DC; Oxford, UK; New York, NY: NASW Press and Oxford University Press. ISBN 978-0-19-530661-3. OCLC 156816850. Pecora, Peter J.; Cherin, David; Bruce, Emily; Arguello, Trinidad de Jesus (2010). Strategic Supervision: A Brief Guide for Managing Social Service Organizations. SAGE Publications. ISBN 978-1-4129-1543-4. Popple, Philip R.; Leighninger, Leslie (2008). The Policy-Based Profession: An Introduction to Social Welfare Policy Analysis for Social Workers (4th ed.). Boston, MA: Pearson/Allyn and Bacon. ISBN 978-0-205-48592-5. OCLC 70708056. Ragg, D. Mark (2011). Developing Practice Competencies: A Foundation for Generalist Practice (1st ed.). Hoboken, NJ: Wiley. ISBN 978-0-470-55170-7. OCLC 757394287. Reamer, Frederic G. (2006). Ethical Standards in Social Work: A Review of the NASW Code of Ethics (2nd ed.). Washington, DC: NASW Press. ISBN 978-0-87101-371-2. OCLC 63187493. Richardson, Virginia E.; Barusch, Amanda Smith (2006). Gerontological Practice for the Twenty-First Century: A Social Work Perspective. New York, NY: Columbia University Press. ISBN 0-231-10748-X. OCLC 60373501. Ruffolo, Mary Carmel; Perron, Brian E; Voshel, Elizabeth H (2015). Direct Social Work Practice: Theories and Skills for Becoming an Evidence-Based Practitioner (1st ed.). Los Angeles: SAGE Publications. ISBN 978-1-4833-7924-1. Sowers, Karen M.; Dulmus, Catherine N.; et al. (2008). Comprehensive Handbook of Social Work and Social Welfare. Hoboken, NJ: John Wiley & Sons. ISBN 978-0-471-75222-6. OCLC 155755265. Statham, Daphne (2004). Managing Front Line Practice in Social Work. New York, NY: Jessica Kingsley Publishers. ISBN 1-4175-0127-8. OCLC 54768593. Thyer, Bruce A.; Wodarski, John S. (2007). Social Work in Mental Health: An Evidence-Based Approach. Hoboken, NJ: John Wiley. ISBN 978-0-471-69304-8. OCLC 65197928. Turner, Francis J. (2005). Canadian Encyclopedia of Social Work. Waterloo, ON: Wilfrid Laurier University Press. ISBN 0-88920-436-5. OCLC 57354998. Watson, Larry D.; Hoefler, Richard A. (November 5, 2013). Developing Nonprofit and Human Service Leaders. SAGE Publications. ISBN 978-1-4522-9152-9. Webb, Stephen (2006). Social Work in a Risk Society. London, UK: Palgrave, Macmillan. ISBN 978-0-230-21442-2. OCLC 49959266. Webb, Stephen (2017). Professional Identity and Social Work. London, UK: Routledge. ISBN 978-1-138-23443-7. OCLC 49959266. Zastrow, Charles (2014). Introduction to Social Work and Social Welfare: Empowering People. Belmont: Cengage Learning. ISBN 978-1-285-17640-6. Social Work, WCIDWTM - The University of Tennessee Social Work Evaluation and Research Resources Archived October 10, 2021, at the Wayback Machine Retrieved from " Social work is an academic discipline and practice-based profession concerned with meeting the basic needs of individuals, families, groups, communities, and society as a whole to enhance their individual and collective well-being.