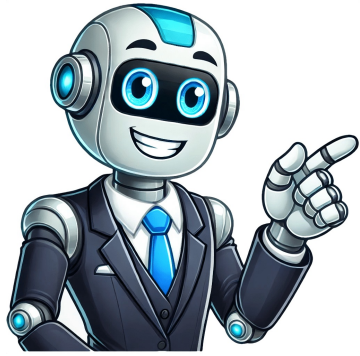


I'm not a bot



Readers help support Windows Report. We may get a commission if you buy through our links. Read our disclosure page to find out how can you help Windows Report sustain the editorial team. Read more Microsoft has partnered with Nvidia to integrate the GeForce NOW service into its Xbox.com game pages. The announcement, one of the most important in gaming, was made on X (formerly known as Twitter) this week. The Xbox—GeForceNow partnership allows gamers to start and enjoy their chosen PC games straight from Xbox.com on high-performance servers provided by Nvidia. This will allow gamers to play anytime and anywhere they like without being limited by hardware restrictions. Microsoft and Nvidia announced their first major partnership back in February 2023. The goal was to make PC Game Pass games available on the GeForce NOW cloud gaming service. This happened in May 2023, and many more titles have been added. The new announcement doesn't just show an expansion of the Xbox world beyond regular platforms but highlights how strong cloud gaming has become. People who play games can use GeForce NOW and its powerful Nvidia GeForce RTX 4080 GPUs for a monthly charge to have a smooth gaming experience on different devices. If you are already paying for a PC Game Pass subscription, this offer becomes more interesting because it gives access to many games at no extra expense. This is not the first move Microsoft has made into cloud gaming. In a previous effort, they partnered with Amazon to bring an Xbox app for the Amazon Fire TV Stick 4K and Fire Stick 4K Max – expanding opportunities even more. The bundle during Amazon Prime Day contained one Xbox Wireless Controller, an Amazon Fire TV Stick 4K Max, and a month's subscription to Xbox Game Pass Ultimate, which was being sold at a special price. This showcases how Microsoft envisions future gaming as accessible and interconnected. Blending GeForce NOW with Xbox.com pages signifies a future where distinctions among various gaming platforms fade away. This will make top-quality gaming experiences available for all, regardless of their preferred device. Have you tried cloud gaming via GeForce NOW or Xbox Cloud Gaming? If so, please let us know your experience with it. Image: NvidiaAs of today, it's possible to play PC games on your Xbox One, Series X or Series S through the power of Nvidia GeForce Now and cloud streaming. Incredible! Plus, it works with your existing library of PC games. We've cultivated a little guide to help you on your way, so you can begin using Nvidia GeForce Now on your Xbox: How To Play PC Games With GeForce Now On Xbox Pick A Membership First of all, you're going to need an Nvidia GeForce Now account, which you can sign up for in the 'Memberships' section on the GeForce Now website. The Basic account gives you a free membership, but it's limited to only the most basic of features (unsurprisingly) and also only limits you to one-hour play sessions. Still, we suggest starting with this. Alternatively, you can opt for the Priority or RTX 3080 memberships, which provide much better performance and session lengths. Click 'Join', enter your details, and sign up for your chosen membership tier. Start Playing Subscribe to Pure Xbox on YouTube29k Once you're all signed up, open the Microsoft Edge browser on Xbox and log into your account on the Nvidia GeForce Now website. Then, open up the GeForce Now web client, where you'll be able to pick the game you want to play, as well as link various accounts such as your Steam or Epic Games Store account. If you have issues with activating the virtual keyboard when signing into Steam, Epic or anything else, the best solution is to plug an actual keyboard into the USB slot. Alternatively, it's possible to sign into your Steam or Epic account with GeForce Now via PC or mobile, and then just quit the app and pick up the session on your console. Then, all you need to do is start playing! Keep in mind you may need to a wait in a queue when using the free membership, as those who have paid for their subscriptions are given priority before everyone else. Also, be aware that playing games with a mouse and keyboard is reportedly not the most ideal experience right now (more details in the video above), and you may or may not run into issues with latency. Additionally, PlayStation Studios' Death Stranding isn't currently playable or even searchable on Xbox. It's not a massively difficult process; it's all about ensuring your account is fully set up and that the games you want to play via the service are supported. Currently, there are over 1000 games that support GeForce Now, so the odds are the majority of games in your PC libraries will work. Give it a try and let us know how you get on! Will you be using Nvidia GeForce Now on Xbox? Let us know in the comments below. If You Have a GeForce NOW Subscription, You Can Now Play Their Games on Xbox In the ever-evolving landscape of gaming, the lines between platforms continue to blur as technology advances and user preferences shift. The recent announcement that NVIDIA's GeForce NOW streaming service can now be accessed via Xbox consoles marks a significant milestone in cloud gaming and cross-platform experiences. This exciting development opens doors for gamers who are eager to utilize their GeForce NOW subscriptions on their Xbox systems. This article digs deep into what this means for gamers, the technology behind cloud gaming, and the implications for the industry as a whole. Understanding GeForce NOW Before delving into the implications of GeForce NOW on Xbox, it's crucial to understand what GeForce NOW is. Launched by NVIDIA, GeForce NOW is a cloud gaming service that allows users to play video games on various devices, leveraging powerful cloud gaming technology. By connecting to NVIDIA's powerful server farms, players can run high-end games without needing an expensive gaming PC. GeForce NOW supports a wide variety of games, including popular titles from Steam, Epic Games Store, and Ubisoft's platform. The service effectively transforms underpowered devices, like laptops and tablets, into capable gaming machines. With the ability to stream games at high resolutions and frame rates, GeForce NOW has made gaming more accessible. The Exciting Xbox Integration The integration of GeForce NOW with Xbox is a groundbreaking development in the cloud gaming sector. Traditionally, console gaming has been a closed ecosystem, where each console has its exclusive games and platforms. However, as the popularity of cloud gaming grows, companies are beginning to explore cross-platform solutions that cater to a more interconnected gaming experience. With the development of the Xbox cloud gaming service known as Xbox Cloud Gaming (formerly Project xCloud), Microsoft has made strides in unifying gaming experiences across devices. However, GeForce NOW's availability on Xbox brings a competitive edge to the equation. For Xbox users, this means that you can access your favorite PC games from your GeForce NOW library directly on your Xbox console. This functionality significantly enhances the value of both the GeForce NOW subscription and the Xbox console, providing players with greater flexibility to play their favorite titles. How to Access GeForce NOW on Xbox For gamers interested in taking advantage of this new service, accessing GeForce NOW on Xbox is a simple process. Here's a step-by-step guide: GeForce NOW Subscription: Ensure you have an active GeForce NOW subscription. Depending on your needs, you can choose the free tier, which gives you a one-hour gaming session, or opt for the paid tiers that offer increased priority access and longer session times. Set Up Your Xbox: Make sure your Xbox console is connected to the internet. A strong and stable internet connection is crucial for optimal streaming performance. Install Microsoft Edge: If you haven't already, navigate to the Xbox Store and install the Microsoft Edge browser. GeForce NOW runs seamlessly through the browser, allowing you to access its platform. Log in to GeForce NOW: Open Microsoft Edge on your Xbox, navigate to the GeForce NOW website, and log in using your GeForce NOW account credentials. Select and Play: Browse through your library of available games and start playing! You can use your Xbox controller to control the games, making the experience familiar and enjoyable. Benefits of Using GeForce NOW on Xbox The integration of GeForce NOW with Xbox brings numerous benefits to players: Access to a Larger Game Library: Many PC games are available on consoles. With GeForce NOW, Xbox gamers can tap into a broader selection of games, including those that are exclusive to PC. This is particularly exciting for gamers who have been looking to play titles that are not available on the Xbox platform. High-Quality Graphics: NVIDIA's powerful servers can provide a higher graphical fidelity than what some consoles can offer, especially older models. Through GeForce NOW, Xbox gamers can potentially experience games with enhanced graphics and higher frame rates. Convenience and Flexibility: For gamers who have already invested in a GeForce NOW library, accessing those games on Xbox means greater flexibility. You can play your favorite titles on your console without needing to buy additional licenses or download large files. Cost-Effective Gaming: For gamers looking to avoid the expensive cost of high-end gaming PCs, using GeForce NOW on an Xbox console can be a cost-effective alternative. You get the advantage of powerful gaming without the hefty investment in hardware. No Downloads Required: One of the significant advantages of cloud gaming is that there are no lengthy downloads or installations. Games can be played almost instantly, which is a game-changer in creating a seamless gaming experience. Performance Considerations As with any streaming service, performance is a critical consideration when using GeForce NOW on Xbox. Here are several factors that could influence your gaming experience: Internet Speed: A minimum internet speed of 15 Mbps is recommended for a good gaming experience on GeForce NOW. However, for optimal performance and to play at higher resolutions, speeds of 25 Mbps or more are ideal. Latency: Because cloud gaming relies on streaming, latency can be a concern. The physical distance between your location and the data center can impact performance. Lower latency means more responsive gameplay. Network Congestion: If multiple devices are using the same network simultaneously, it can affect your gaming experience. It's advisable to use a wired connection or ensure that other devices are not using bandwidth-intensive applications while gaming. Cloud Server Availability: GeForce NOW operates servers across various locations, and your experience may vary depending on server load and proximity. Typically, performance is more stable during off-peak hours. The Future of Cloud Gaming The integration of GeForce NOW with Xbox highlights the growing trend toward cloud gaming. As technology continues to evolve, several key trends are reshaping the gaming landscape: Increased Accessibility: Cloud gaming is making high-quality gaming experiences accessible to players who may not have the resources to invest in gaming PCs or hardware. This democratization of gaming opens up new avenues for players worldwide. Enhanced Cross-Platform Experiences: More companies are recognizing the importance of cross-platform compatibility. As competitive gaming continues to thrive, the demand for platforms that support diverse interactions will intensify. Continuous Improvements in Technology: Innovations in server technology, data compression, and network infrastructure are expected to enhance the performance of cloud gaming in the coming years, reducing latency and improving user experiences. Adoption by Developers: As the gaming industry grows, more developers may seek partnerships with cloud gaming services. This could fuel the creation of exclusive content or unique experiences that are accessible across various platforms. Implications for the Gaming Industry The shift toward cloud gaming, highlighted by the GeForce NOW and Xbox integration, carries significant implications for the gaming industry: Changing Business Models: The way games are distributed and monetized may evolve. Subscription business models, where players pay a monthly fee for access to a library of games, are becoming popular. This may lead to a shift away from traditional retail sales. Impact on Console and PC Sales: As cloud gaming grows, we might see a decline in sales of high-end gaming PCs and consoles, as fewer players feel the need to invest in expensive hardware. New Opportunities for Developers: Independent developers may benefit from the rise of cloud gaming, as it provides an easier avenue to get their games into players' hands without being dependent on platform exclusivity. Evolving Player Behavior: Consumers' gaming habits are likely to change as they adapt to cloud gaming. This includes playing a broader range of games and experimenting with genres previously not accessible. Conclusion The integration of NVIDIA's GeForce NOW with Xbox represents a promising shift in the gaming landscape. It not only enhances the value of both services but also provides Xbox players with access to an extensive library of PC games. As cloud gaming continues to evolve and grow in popularity, it carries the potential to change the industry's dynamics significantly. This exciting development empowers gamers to enjoy high-quality gaming experiences across platforms, making gaming more inclusive and accessible than ever before. The future of gaming is here, and it's more interconnected and diverse than we could have ever imagined. As technology advances, players can expect even more innovations and enhancements, all while enjoying their favorite titles from the comfort of their consoles. For gamers, now is an exceptional time to embrace the opportunities provided by GeForce NOW on Xbox. Whether you are a casual player or a hardcore enthusiast, the future of gaming has never looked more promising. The gaming community is poised for growth, creativity, and more innovative experiences that cross traditional boundaries, paving the way for an exciting era of entertainment. Readers help support MSPoweruser. We may get a commission if you buy through our links. Read our disclosure page to find out how can you help MSPoweruser sustain the editorial team Read more Key notes Microsoft is integrating Nvidia's GeForce Now into its Xbox game store pages. This allows users to choose between Xbox Cloud Gaming and GeForce Now for cloud gaming. A new "play with cloud" button will soon enable this feature, linking to GeForce Now directly. Microsoft and Nvidia have a longstanding history of collaborations in cloud gaming. The two tech titans had first signed a binding 10-year deal to bring Xbox PC games, as well as Activision's popular titles like the Call of Duty franchise, to GeForce. And now, the green console enlists GeForce NOW, Nvidia's cloud gaming service, as two of the options to "play with cloud gaming" in the Xbox game store pages besides Xbox's very own offering to enable cloud gaming for first-party Xbox titles. If you own supported Xbox games on Steam, you can link your accounts to these services to play in the cloud from anywhere. Additionally, games owned on the Microsoft Store or through Game Pass subscriptions can also be streamed on NVIDIA GeForce NOW by signing in with a Microsoft account. Launched a little over three years ago, Nvidia GeForce Now connects you to over 1,500 titles with Day Pass plans available. The basic membership plan starts at zero and a maximum 1-hour session, but if you aim for the highest performance, the Ultimate tier gets you a GeForce RTX 4080, a maxed-out 4K resolution with up to 240 frame-per-second (fps), and a maximum 8-hour long session. Sony's PlayStation, Xbox's across platforms, making gaming more inclusive and accessible than ever before. The future of gaming is here, and it's more interconnected and diverse than we could have ever imagined. As technology advances, players can expect even more innovations and enhancements, all while enjoying their favorite titles from the comfort of their consoles. For gamers, now is an exceptional time to embrace the opportunities provided by GeForce NOW on Xbox. Whether you are a casual player or a hardcore enthusiast, the future of gaming has never looked more promising. The gaming community is poised for growth, creativity, and more innovative experiences that cross traditional boundaries, paving the way for an exciting era of entertainment. Readers help support MSPoweruser. We may get a commission if you buy through our links. Read our disclosure page to find out how can you help MSPoweruser sustain the editorial team Read more Key notes Microsoft is integrating Nvidia's GeForce Now into its Xbox game store pages. This allows users to choose between Xbox Cloud Gaming and GeForce Now for cloud gaming. A new "play with cloud" button will soon enable this feature, linking to GeForce Now directly. Microsoft and Nvidia have a longstanding history of collaborations in cloud gaming. The two tech titans had first signed a binding 10-year deal to bring Xbox PC games, as well as Activision's popular titles like the Call of Duty franchise, to GeForce. And now, the green console enlists GeForce NOW, Nvidia's cloud gaming service, as two of the options to "play with cloud gaming" in the Xbox game store pages besides Xbox's very own offering to enable cloud gaming for first-party Xbox titles. If you own supported Xbox games on Steam, you can link your accounts to these services to play in the cloud from anywhere. Additionally, games owned on the Microsoft Store or through Game Pass subscriptions can also be streamed on NVIDIA GeForce NOW by signing in with a Microsoft account. Launched a little over three years ago, Nvidia GeForce Now connects you to over 1,500 titles with Day Pass plans available. The basic membership plan starts at zero and a maximum 1-hour session, but if you aim for the highest performance, the Ultimate tier gets you a GeForce RTX 4080, a maxed-out 4K resolution with up to 240 frame-per-second (fps), and a maximum 8-hour long session. Sony's PlayStation, Xbox's number-one competitor, also launched the streaming feature for select PS5 titles. A 4K cloud gaming experience also came to the next-gen console, which, compared to the Xbox Series, is a big selling point. But Xbox has been trying to reach into larger audience by launching an Xbox-free experience, letting you "play Xbox without Xbox." The new feature has now arrived on Amazon Fire TV Sticks, and you can play select Xbox titles on this TV by only using the Sticks and a controller, even if it's a PS4 or PS5 one. Play to Your Ultimate Potential Experience GeForce RTX-powered cloud gaming Yes, you can play Xbox games on GeForce NOW. The recent partnership between Microsoft and NVIDIA allows members with an active subscription to Xbox PC Game Pass or Game Pass Ultimate to access all games that have been released on GeForce NOW. Does GeForce NOW support Xbox? Yes, GeForce NOW supports Xbox. Members who have an active subscription to Xbox PC Game Pass or Game Pass Ultimate will have access to all games that have been released on GeForce NOW. Can I play my own games on GeForce NOW? Yes, you can play your own games on GeForce NOW. You need to own or purchase a game from one of the supported game stores before playing it on GeForce NOW. The service also supports more than 100 of the most popular free-to-play games. Is Xbox cloud like GeForce NOW? No, Xbox cloud gaming and GeForce NOW are different. Xbox's cloud streaming service, attached to Xbox Game Pass, uses Xbox Series hardware. On the other hand, GeForce NOW uses high-end PC systems, with the top tier making use of Nvidia's high-end 4080 graphics cards. Which is better, Xbox cloud gaming or GeForce NOW? When it comes to the best all-around experience, GeForce NOW is our strongest recommendation. While Xbox cloud gaming offers a vast library of games through the Xbox Game Pass subscription, GeForce NOW brings some of the best visual quality, a massive game compatibility list, and a free membership plan option. How to PLAY GeForce NOW on XBOX? To play GeForce NOW on Xbox, you need to install the GeForce NOW app on your Xbox console. Once installed, you can launch the app and login with your GeForce NOW account to start playing the supported games. Does cloud gaming connect to your Xbox? Yes, cloud gaming can connect to your Xbox. With Xbox cloud gaming, you can play select free-to-play games with a free Microsoft account on various supported devices, including Windows PC, Apple or Android phones and tablets, Xbox consoles, or select Samsung smart TVs. Is GeForce NOW free 1 hour a day? Yes, free members of GeForce NOW have session lengths lasting up to 1 hour. After the current session expires, these members may join the queue again with standard access terms. There is no set limit to how many times a member may start a new session in a day, subject to standard access terms. Is GeForce NOW worth it? Yes, GeForce NOW is worth it under the right conditions. It provides the ability to stream games on any device, offering some of the best visual quality and a massive game compatibility list. However, it's important to note that there may be latency issues and it comes with a cost depending on the membership plan. What is the Xbox GeForce Now deal? Microsoft and NVIDIA have agreed to a 10-year partnership to bring Xbox PC games to the NVIDIA GeForce NOW cloud gaming service. This partnership allows gamers to access Xbox games through the cloud on GeForce NOW, benefitting the more than 25 million members in over 100 countries. Why doesn't Xbox use NVIDIA? Xbox consoles use an APU (Accelerated Processing Unit) that combines the CPU and GPU in a single chip. AMD is currently the only company that manufactures both x86-64bit CPUs and GPUs. If Xbox were to use NVIDIA GPUs, they would have to partner with another company, most likely Intel, to co-design a joint Intel-NVIDIA APU, which would be more challenging than their current partnership with AMD. Will Steam come to Xbox? NVIDIA's GeForce NOW service has expanded to Microsoft Edge browsers, which opens the door for Steam libraries to be played through the cloud on Xbox. This integration allows Xbox users to access and play games from the Steam platform on their consoles through GeForce NOW. How do I import games to GeForce NOW? To import games to GeForce NOW, you can launch the GeForce NOW app, select titles with Day Pass plans available. The basic membership plan starts at zero and a maximum 1-hour session, but if you aim for the highest performance, the Ultimate tier gets you a GeForce RTX 4080, a maxed-out 4K resolution with up to 240 frame-per-second (fps), and a maximum 8-hour long session. Sony's PlayStation, Xbox's Bethesda, 21 Bethesda games are now available on GeForce NOW, giving users access to a variety of popular titles through the cloud gaming service. What are the disadvantages of GeForce NOW? While GeForce NOW offers several benefits, it also has some drawbacks to consider. These include potential latency issues, a limited game library compared to other platforms, and the cost of the service. However, overall, GeForce NOW provides a high-quality gaming experience on various devices. Is GeForce NOW free any good? Yes, GeForce NOW offers a free membership option that provides a great gaming experience. With the ability to play games on any device and access to multiple free-to-play titles, it is an excellent way to enjoy gaming without the need for expensive hardware. Why is GeForce NOW so laggy? There are a few factors that can contribute to lag in GeForce NOW. Limiting other network traffic in your home, such as streaming and large file downloads, can help improve performance. Moving closer to your Wi-Fi router, especially if using a 5GHz channel, can also reduce latency and improve the overall gaming experience. Does GeForce have Fortnite? Yes, you can play Fortnite on GeForce NOW. After signing up for the service, you can access and play Fortnite via cloud streaming on GeForce NOW using either a native GeForce NOW app or a web browser. How long can you play GeForce NOW for free? Free members of GeForce NOW can play a game session for up to one hour. Founder's members, on the other hand, can enjoy extended gameplay sessions of up to six hours. Which cloud gaming is best? There are several cloud gaming services available, each with its own strengths. Some of the top contenders in the market include Xbox Game Pass Ultimate, which offers a wide range of games; GeForce NOW, known for its game compatibility and visual quality; Amazon Luna, ideal for casual gamers; Blacknut, suitable for families; and Shadow, providing low latency gaming experiences. Can I play my Xbox games on PC? Yes, you can play your Xbox games on PC. With Xbox Play Anywhere, digital titles are available to play on both Xbox consoles and Windows 10/11 PC. This allows you to access and enjoy your favorite Xbox games on your PC without needing an Xbox console. Is Xbox Cloud Gaming free? Xbox Cloud Gaming is not entirely free, except for one exception. Microsoft has partnered with Epic Games to bring Fortnite to the Xbox Cloud Gaming service, allowing anyone with a free Microsoft account to access and play the game without the need for a paid subscription. How to get Xbox Game Pass for free? You can get Xbox Game Pass for free through Microsoft Rewards. By using Microsoft products such as Bing and Xbox, you can earn points that can be redeemed for a free month of Xbox Game Pass, along with other rewards. Spending around 10 minutes a day on these products can help you accumulate enough points for the subscription. Share — copy and redistribute the material in any medium or format for any purpose, even commercially. Adapt — remix, transform, and build upon the material for any purpose, even commercially. The licensor cannot revoke these freedoms as long as you follow the license terms. Attribution — You must give appropriate credit , provide a link to the license, and indicate if changes were made . You may do so in any reasonable manner, but not in any way that suggests the licensor endorses you or your use. ShareAlike — If you remix, transform, or build upon the material, you must distribute your contributions under the same license as the original. No additional restrictions — You may not apply legal terms or technological measures that legally restrict others from doing anything the license permits. You do not have to comply with the license for elements of the material in the public domain or where your use is permitted by an applicable exception or limitation . No warranties are given. The license may not give you all of the permissions necessary for your intended use. For example, other rights such as publicity, privacy, or moral rights may limit how you use the material. Play to Your Ultimate Potential Experience GeForce RTX-powered cloud gaming New Ultimate Membership Offers Cloud Gaming at 240 Frames per Second. Play Fully Ray-Traced. Portal With RTX NVIDIA today announced GeForce NOW™ is going beyond fast, delivering GeForce RTX™ 4080-class gaming to billions of devices — available exclusively in the new, high-performance Ultimate membership tier. Powered by the NVIDIA Ada Lovelace architecture, upgraded GeForce NOW RTX 4080 SuperPODs will deliver over 64 teraflops of graphics horsepower to an individual user, which is more than 5x that of an Xbox Series X and nearly 1.75x over the previous-generation SuperPODs. The GeForce NOW Ultimate membership raises the bar on cloud gaming, bringing it closer than ever to a local gaming experience. With GeForce RTX 4080 performance, Ultimate members will be the first to experience true PC gaming — streaming at up to 240 frames per second from the cloud with full ray tracing and DLSS 3, in hit games like Portal With RTX. With the addition of NVIDIA Reflex, GeForce NOW achieves click-to-pixel latency below 40 milliseconds — another first in cloud gaming. “NVIDIA’s Ada architecture is a big leap in graphics quality, and through GeForce NOW we’re streaming an RTX 4080 experience to more devices and more gamers than ever,” said Jeff Fisher, senior vice president of GeForce at NVIDIA. “GeForce NOW Ultimate members will have the technology and the performance to experience even the most demanding games in their full ray-traced glory.” Current GeForce NOW RTX 3080 members will be upgraded immediately to Ultimate memberships and be among the first to experience the full benefits of GeForce RTX 4080 performance in the cloud when the servers start rolling out later this month. RTX Technologies to the Cloud NVIDIA RTX technologies introduced with the Ultimate membership are lifting cloud gaming to new heights. NVIDIA Reflex 240-fps mode brings frame-pacing technology to the cloud, which helps streamline the execution of game simulation, rendering and encoding on the server. When paired with an NVIDIA G-SYNC® monitor, GeForce NOW will vary the streaming rate to the client for the first time, delivering smooth and instantaneous frame updates to client screens on Reflex-enabled games — further driving down total latency. Next-generation RTX technologies coming to GeForce NOW include full ray tracing and DLSS 3 — introduced with the GeForce RTX 40 Series launch. They deliver beautiful, cinematic-quality graphics and use AI to keep frame rates smooth. The Ultimate Benefits GeForce NOW Ultimate members are set to receive three major streaming upgrades. The new SuperPODs are capable of rendering and streaming at up to 240 fps. Paired with NVIDIA Reflex, members' game play will feel as if it is on a desktop PC. 4K gaming goes from fast to beyond fast with an upgrade from 60 fps to 120 fps, while ultrawide monitors will be supported for the first time, at up to 3,840 x 1,600 resolution, including many popular variants such as 3440 x 1440 and 2560 x 1080. Ultimate members can enjoy longer streaming sessions, fastest access to the highest-performance cloud gaming servers and game settings that persist from session to session. It's Time to Play the Game GeForce NOW recently eclipsed the 1,500 game milestone — with mega-hits from top publishers like Electronic Arts and Ubisoft, popular PC indie titles like Valheim and Rust, and over 100 of the biggest free-to-play games like Fortnite and Genshin Impact. New games are released every GFN Thursday, and new features like Ubisoft account syncing bring members into their games instantly. Games are available from the biggest PC game stores, including Steam, Epic, Ubisoft and Electronic Arts. Members will be able to stream some of the biggest upcoming PC game launches on the service, starting with Portal With RTX later this week. Relive the critically acclaimed and award-winning Portal reimagnied with full ray tracing and higher frame rates with DLSS 3, streaming from the cloud. Ultimate members will see performance multiply with DLSS 3 for Atomic Heart, from Mundfish and Focus Entertainment. FNTASTIC and MyTona's The Day Before launches later this year, accelerated by DLSS 3, and with a detailed world enhanced with ray-traced reflections. Stream with, or against, friends with the realistic physics engine in Party Animals from Recreate Games and Source Technology. The GeForce NOW catalog features many of the most popular PC games, including recent day-and-date releases of Marvel's Midnight Suns, Warhammer 40,000: Darktide and The Witcher 3: Wild Hunt Next-Gen Update, as well as massive, free-to-play titles like Destiny 2, Lost Ark and Apex Legends. Pricing and Availability The GeForce NOW Ultimate membership is available for new user sign-ups today, at \$19.99 per month or \$99.99 for six months. GeForce RTX 3080 members' accounts have already been converted to the new membership at their current pricing. Upgraded GeForce RTX 4080 performance streaming from the new SuperPODs will be available in North America and Europe starting later this month, with continued rollout over the months to follow. Quantities are limited. New AT&T Fiber customers, and new or existing AT&T Fiber customers on an eligible 5G rate plan, can get a complimentary six-month Ultimate membership. Visit AT&T Gaming for more details. Priority memberships remain available starting at \$9.99 per month or \$49.99 for six months. These members get access to premium rigs that turn RTX ON, extended session lengths and faster access to gaming servers. NVIDIA Home Menu icon Close icon Menu icon Close icon Accordion is closed, click to open. Accordion is open, click to close. Click to expand Click to expand Click to expand menu. Click to collapse menu. Click to collapse menu. Click to collapse menu. Click to see cart items Click to search Visit your regional NVIDIA website for local content, pricing, and where to buy partners specific to your country. Argentina Australia België (Belgium) Belgique (Belgium) Brasil (Brazil) Canada Česká Republika (Czech Republic) Chile Colombia Danmark (Denmark) Deutschland (Germany) España (Spain) France India Italia (Italy) México (Mexico) Middle East Nederland (Netherlands) Norge (Norway) Österreich (Austria) Peru Polska (Poland) Rest of Europe România (Romania) Singapore Suomi (Finland) Sverige (Sweden) Türkiye (Turkey) United Kingdom United States (South Korea) 中國大陸 (Mainland China) 台灣 (Taiwan) 日本 (Japan) NVIDIA logo A new update for the Xbox app for PC is adding the option to play cloud-enabled games with Nvidia's GeForce Now instead of Microsoft's Xbox Cloud Gaming. This GeForce Now integration previously came to Xbox.com game pages last year, allowing players to easily launch supported games on GeForce NOW and enjoy a superior experience. Compared to Xbox Cloud Gaming, which is restricted to Xbox Series S versions of games streamed at 1080p/60FPS, Nvidia GeForce Now supports up to 4K gameplay at 240 FPS with DLSS 3 and ray-tracing with a \$19.99/month Ultimate subscription. There's also a \$9.99/month Performance tier offering 1440p gameplay, an ad-supported free tier limited to 1-hour sessions on a basic PC rig. Sign up for our new free newsletter to get three time-saving tips each Friday — and get free copies of Paul Thurrott's Windows 11 and Windows 10 Field Guides (normally \$9.99) as a special welcome gift! It's still good to see Microsoft offer these additional cloud gaming options on its Xbox app on PC. Not all PC games on the Xbox app support streaming via GeForce Now, however, as that depends on cloud licensing deals with game publishers. If you care about Microsoft's first-party games, the company did sign a 10-year deal with Nvidia to make its PC games available on GeForce Now. Today, Microsoft also announced new additions to the Xbox Cloud Gaming "Stream your own game" collection. Xbox players who own Arma Reforger, Arma Reforger, Deliver At All Cost, Monster Energy Supercross - The Official Videogame 6, Project Wingman, Ride 5, and Roadcraft can now stream them with an Xbox Game Pass Ultimate subscription. More games are also coming soon to the library, including Skull and Bones, Watch Dogs Legion, Just Dance, Hello Neighbor 2, and Anno 1800 Console Edition. How do I sync my Xbox games with my GeForce NOW My Library? You need to connect your NVIDIA and Xbox Accounts to enable Game library sync. 1. On any GeForce NOW app, go to Settings > Connections > Xbox > Connect 2. Click CONNECT for Xbox, which will launch a web browser to a Microsoft website. NOTE: Click the "BACK" button if you do not see the correct Microsoft account that you want to link with your NVIDIA account. 3. Login to your Xbox account to complete the account linking step. If your account supports two factor authentication, you will do this during account linking. NOTE: Linking your accounts on TV platforms will generate a QR code which you can scan with your mobile device to complete the account linking. 4. After linking your accounts, you will be able to verify that your account is linked in the GeForce NOW app under Settings > Connections.